

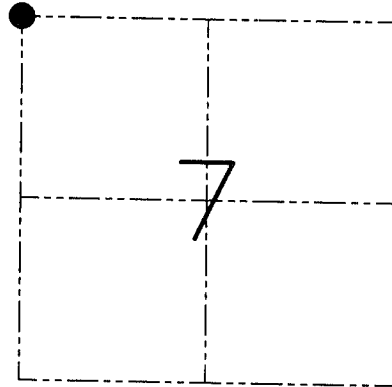
**U.S. PUBLIC LAND SURVEY MONUMENT RECORD - GRANT COUNTY, WI**  
 Section 7, Town 5 North Range 3 West, Town of North Lancaster

**CERTIFICATE**

I, Larry L. Austin, do hereby certify that the corner location on this record was determined by me and/or under my direct supervision and that this U.S. public land survey monument record is correct and complete to the best of my knowledge and belief.

Dated this 16th day of January, 2002

*Larry L. Austin*  
 Larry L. Austin S-1903



● = CORNER LOCATION

**HISTORY OF CORNER ESTABLISHMENT**

Corner was originally set in 1833 by Harvey Parke. In 1882 J.C. Scott set a stake at this location. In 1987 Malliet tied to an "I" beam.

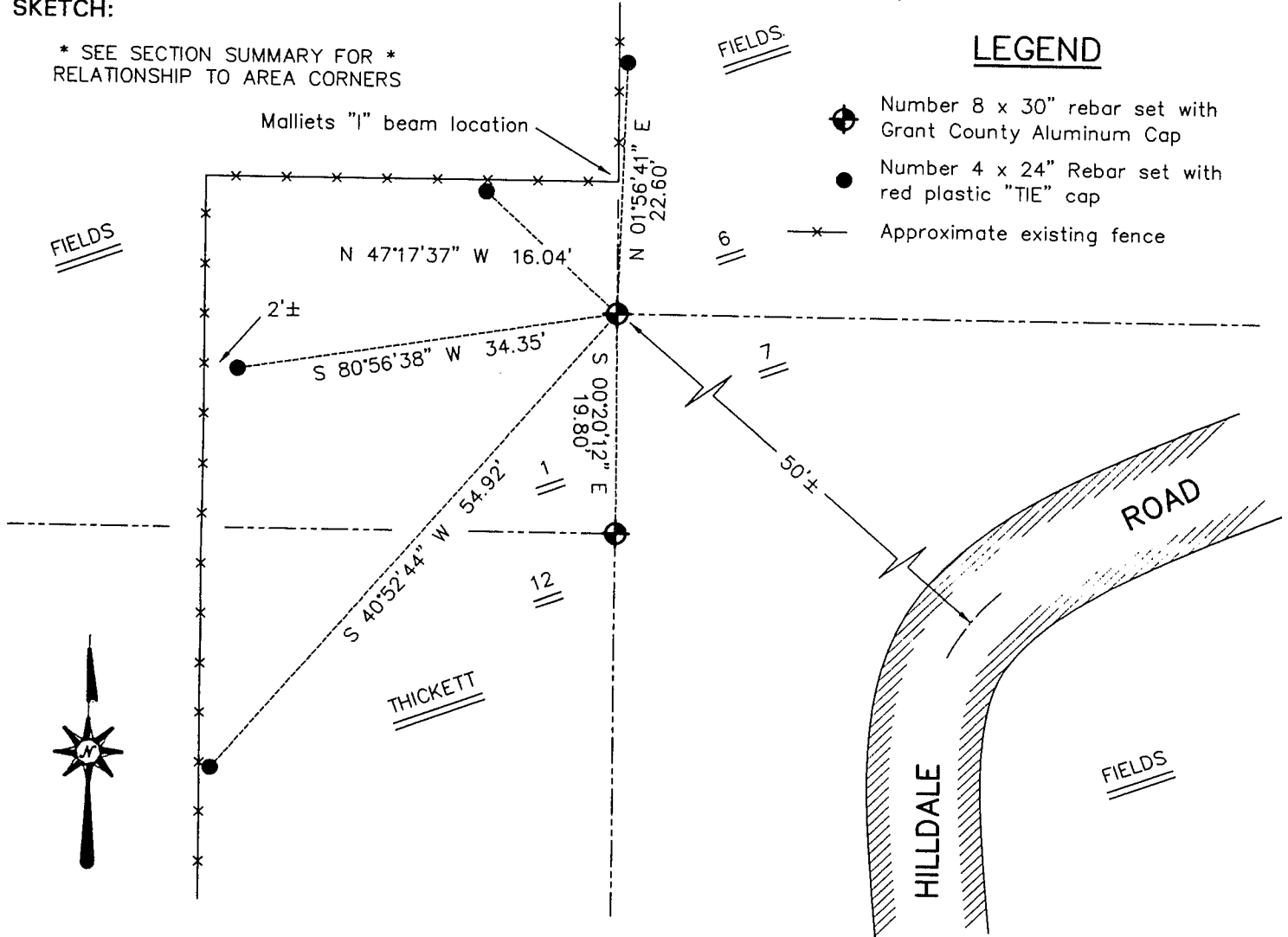
**DESCRIPTION OF CORNER EVIDENCE FOUND**

I found the "I" beam and did not accept it's location. I reset the corner proportionately based on J.C. Scotts survey, both East and South of the corner to occupied and monumented corners. Verified this location using EDM & GPS methods.

**DESCRIPTION OF CORNER AND WITNESS MONUMENTS, references and accessories used to perpetuate the original or re-established location of this corner. Witnesses to the corner location Bobby Sedgwick & Shelby Blindert & Kelly Wolf**

**SKETCH:**

\* SEE SECTION SUMMARY FOR \*  
 RELATIONSHIP TO AREA CORNERS



SKETCH NOT TO SCALE

**AUSTIN ENGINEERING, LLC**  
 4211 HWY 81 EAST, LANCASTER, WI 53813  
 PHONE 608-723-6363 FAX 608-723-6702

FIELDBOOK: SDR33, 2151  
 G: \T5NR3W\08  
 C: \SWA\TIE\T5NR3W\33  
 CREW: BS-SB-SA-KW

DRAWN BY: SW AUSTIN  
 APPROVED: LL AUSTIN

**CORNER NUMBER 33**