

GRANT COUNTY CERTIFIED LAND CORNER

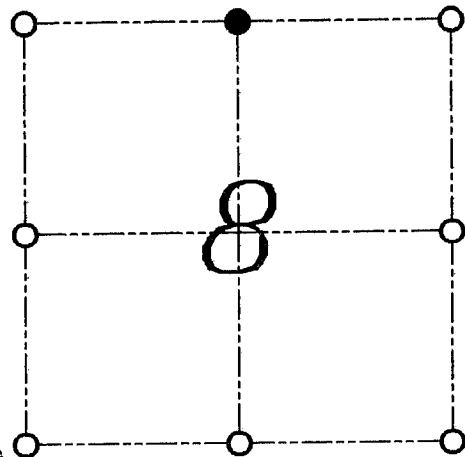
CORNER NUMBER 30

CERTIFICATE:

I, LARRY L. AUSTIN, DO HEREBY CERTIFY THAT ON 24th DAY OF NOVEMBER, 1999, I FOUND EVIDENCE OF THE NORTH 1/4 CORNER OF SECTION 8, TOWN 5 NORTH, RANGE 3 WEST, OF THE FOURTH PRINCIPAL MERIDIAN, AND I RE-ESTABLISHED SAID CORNER ACCORDING TO THE WISCONSIN STATUTES AS SHOWN AND DESCRIBED HEREON.

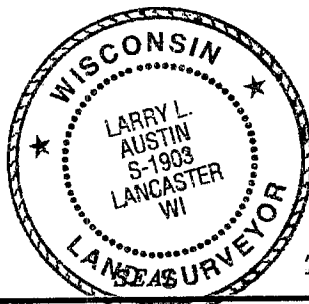
DATED THIS 13th DAY OF DECEMBER, 1999

Larry L. Austin
LARRY L. AUSTIN S-1903



● = CORNER LOCATION

NORTH 1/4 CORNER OF SECTION 8, T 5 N R 3 W TOWN OF NORTH LANCASTER



HISTORY OF ORIGINAL CORNER ESTABLISHMENT:

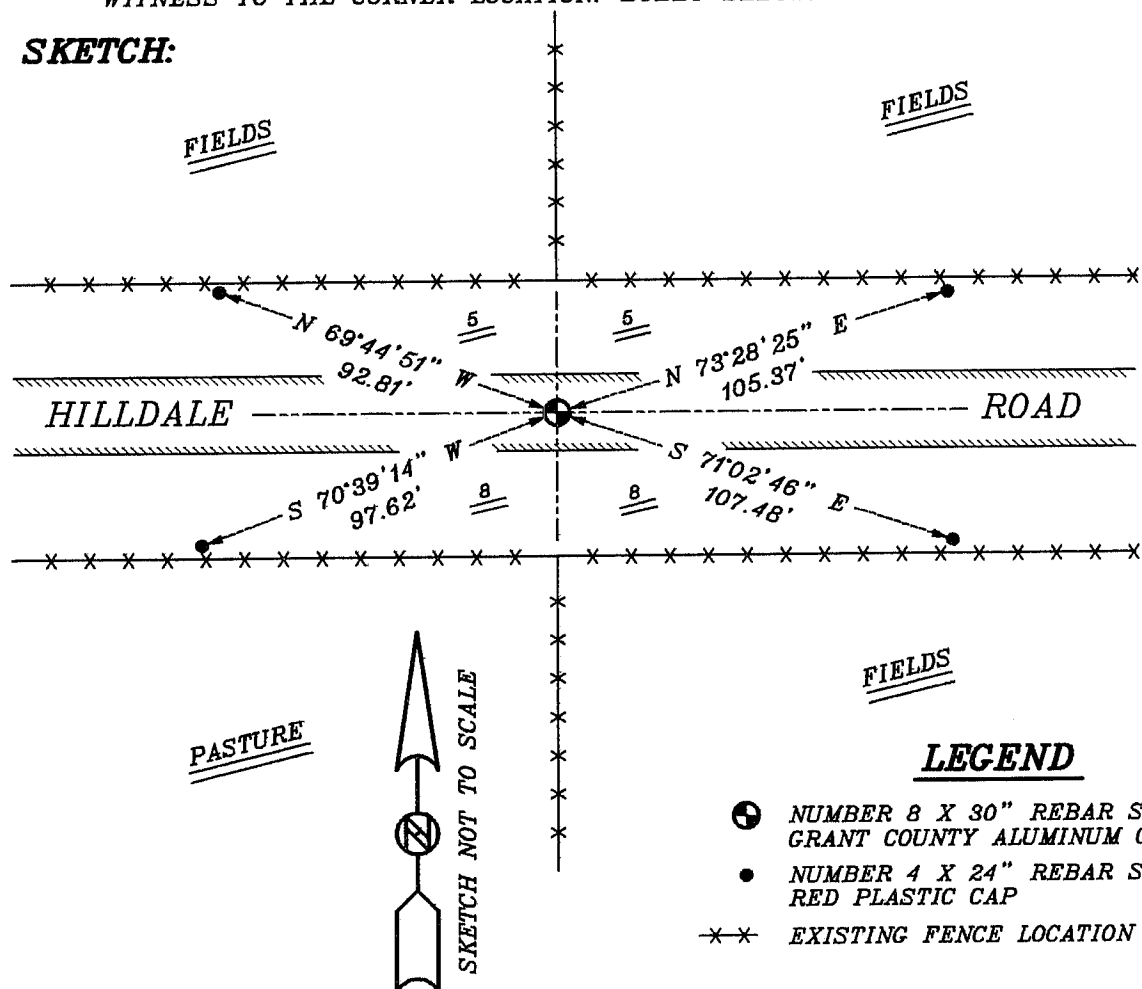
CORNER WAS ORIGINALLY SET IN 1833 BY HARVEY PARKE. I FOUND AN UNDATED SURVEY OF THIS CORNER IN BOOK "D" PAGE 236.

DESCRIPTION OF CORNER EVIDENCE FOUND:

I FOUND AN EXISTING NORTH-SOUTH FENCE AND A CENTERLINE EAST-WEST. I ACCEPTED THIS LOCATION AFTER AN E.D.M. AND G.P.S. TRAVERSE OF THE AREA.

DESCRIPTION OF CORNER AND WITNESS MONUMENTS, REFERENCES AND ACCESSORIES USED TO PERPETUATE THE ORIGINAL OR RE-ESTABLISHED LOCATION OF THIS CORNER:
WITNESS TO THE CORNER LOCATION: BOBBY SEDGWICK & BRIAN WINKERS

SKETCH:



LEGEND

- NUMBER 8 X 30" REBAR SET WITH GRANT COUNTY ALUMINUM CAP
- NUMBER 4 X 24" REBAR SET WITH RED PLASTIC CAP
- ** EXISTING FENCE LOCATION