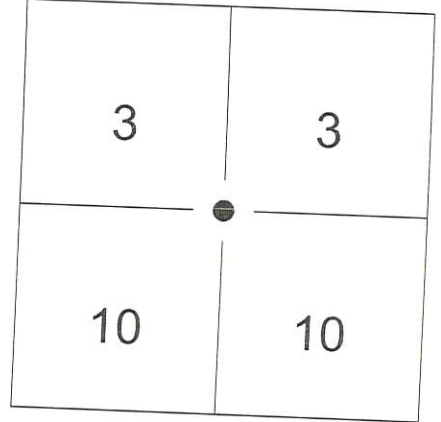


53026

U.S. PUBLIC LAND SURVEY MONUMENT RECORD

Note: This form is intended and designed to fulfill all requirements of Wisconsin Administrative Code, Chapter AE-7.08, U.S. Public Land Survey Monument Record (3)(a)(b)(c)(d)(e)(f)(g)(h)(i). Use additional sheets if necessary.

(a) The North Quarter Corner, Section 10, common to Sections 3 & 10,
Township 5 N, Range 3 W, Town of North Lancaster, Grant County, WI
Rectangular Coordinate System: Wisconsin County Coordinate System,
Grant County Zone



Coordinates: N: 553664.24' E: 817748.48'

Horizontal Datum: NAD 83 (2011)

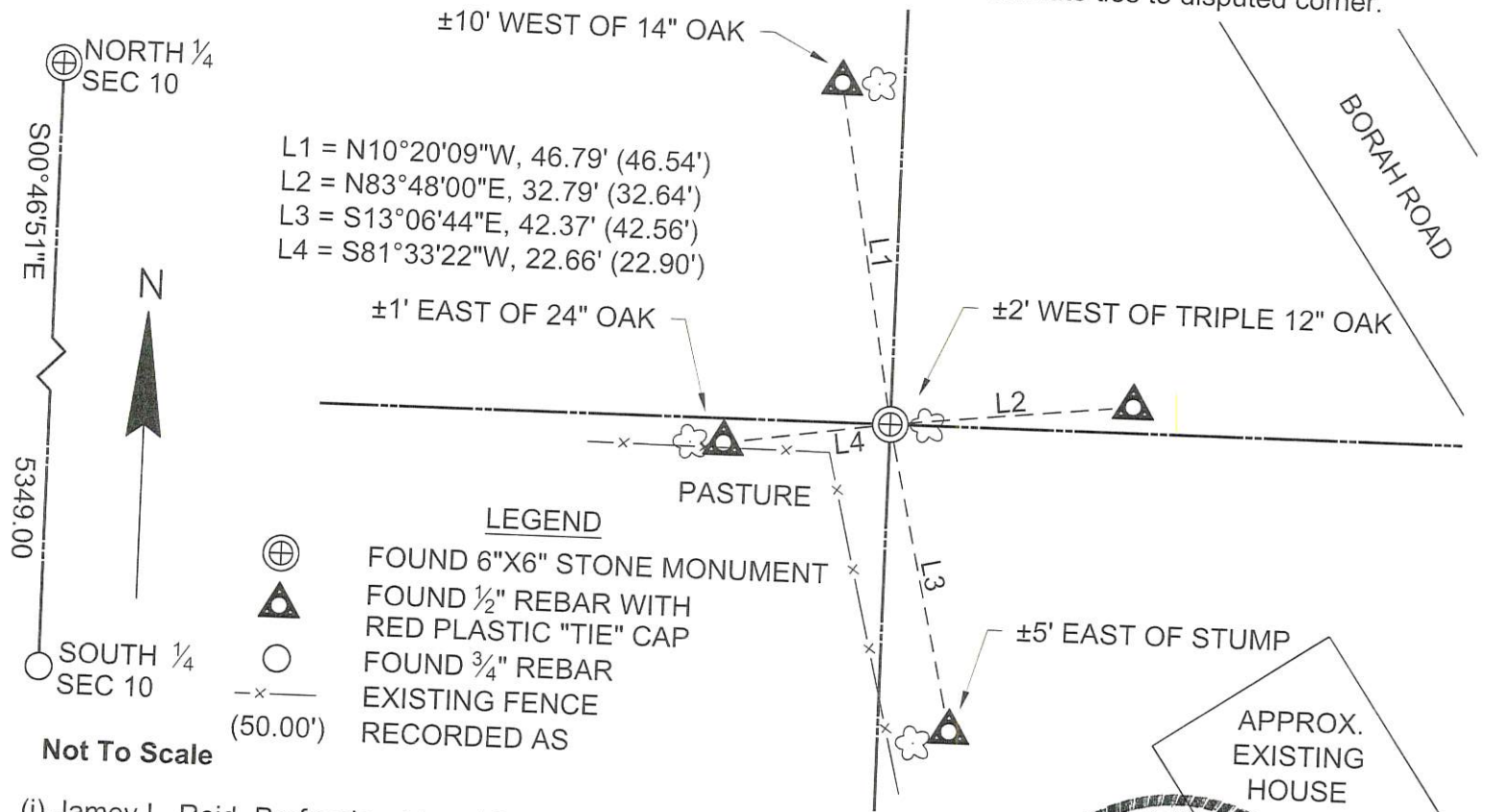
(b)(f)(g)(h) Description of monument found at this corner and if it was accepted, state all evidence (material, testimonial, occupational, plats records, other monuments) used as a basis for accepting. If not accepted or nothing was found, state evidence used as basis for establishing location and what was set. If re-established through lost corner proportionate methods, indicate all monuments, distances and directions used.

1833 - Corner was originally set by Henry Parke

September 19, 2009 - Austin Engineering, LLC found and accepted an unrecorded 6" x 6" existing stone at the corner's location and established witness monuments.

October 18, 2019 - Ayres Associates found the 6"X6" stone monument and 4 witness monuments previously established by Austin Engineering, LLC. Accepted the 6"X6" stone monument and witness monuments as shown.

(c)(d)(e) Plan view of corner with ties to at least four (4) witness monuments. If in disagreement with previously established corner, show the distances between the two corners and also indicate ties to disputed corner.

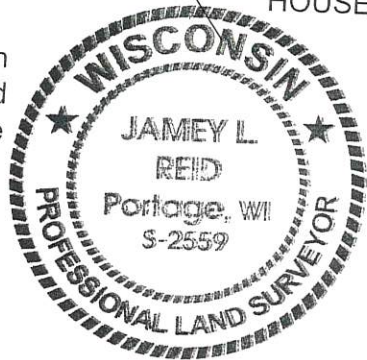


(i) Jamey L. Reid, Professional Land Surveyor, certify that the corner location on this record was determined by me or under my direction and control and that this U.S. Public Land Survey Monument Record is correct and complete to the best of my knowledge and belief.

Jamey L. Reid

Jamey L. Reid, WI Professional Land Surveyor S-2559

11-14-19 Date



Filed for record on 11/20/2019

INDEX NO. 53026

53026

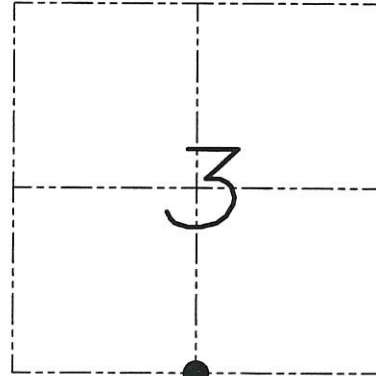
U.S. PUBLIC LAND SURVEY MONUMENT RECORD

Section 3, Town 5 North Range 3 West, Town of North Lancaster, Grant County, Wisconsin

CERTIFICATE

I, Larry L. Austin, do hereby certify that the corner location on this record was determined by me and/or under my direct supervision and that this U.S. public land survey monument record is correct and complete to the best of my knowledge and belief.

Larry L. Austin
Larry L. Austin, S-1903



● = CORNER LOCATION

HISTORY OF CORNER

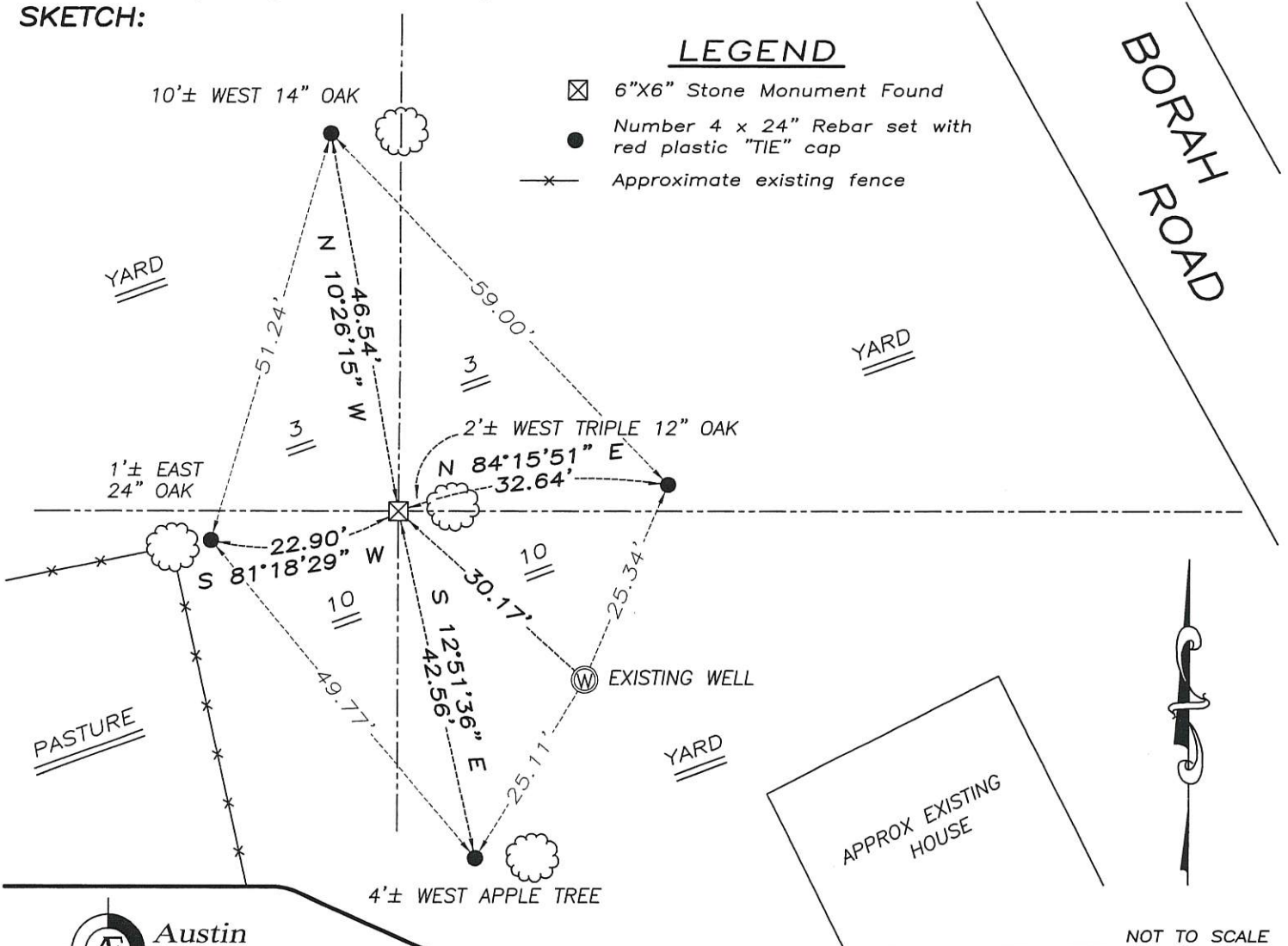
Corner was originally set in 1833 by Henry Parke. No other record of the corner was found.

CORNER EVIDENCE FOUND

I found an unrecorded 6" x 6" existing stone at the corner's location. Verified this location by using EDM and GPS methods.

DESCRIPTION OF CORNER AND WITNESS MONUMENTS, references and accessories used to perpetuate the original or re-established location of this corner. Witnesses to monument location Bobby Sedgwick & Brad Digman & Shane Austin

SKETCH:



LEGEND

- ☒ 6"X6" Stone Monument Found
- Number 4 x 24" Rebar set with red plastic "TIE" cap
- x- Approximate existing fence

BORAH ROAD

NOT TO SCALE

Austin Engineering LLC
austinengineeringllc.com
4211 HWY 81 E, LANCASTER, WI 53813
PHONE: 608-723-6363 FAX: 608-723-6702

JOB NUMBER 09S194-HELMS
FIELDBOOK: TDSR, 2810B
G:\T5NR3W\02
H:\TIE\T5NR3W\26

DRAWN BY: SW AUSTIN
APPROVED: LL AUSTIN