

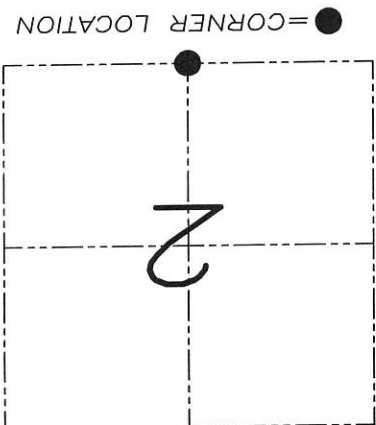
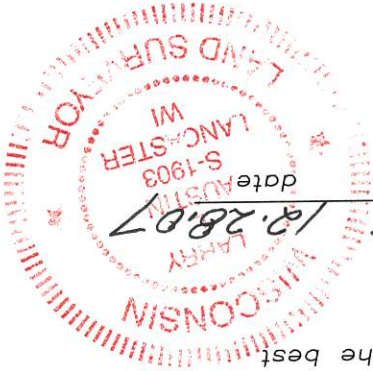
U.S. PUBLIC LAND SURVEY MONUMENT RECORD

Section 2, Town 5 North Range 3 West, Town of North Lancaster, Grant County, Wisconsin

CERTIFICATE

I, Larry L. Austin, do hereby certify that the corner location on this record was determined by me and/or under my direct supervision and that this U.S. public land survey monument record is correct and complete to the best of my knowledge and belief.

Larry L. Austin
 Larry L. Austin, S-1903



HISTORY OF CORNER

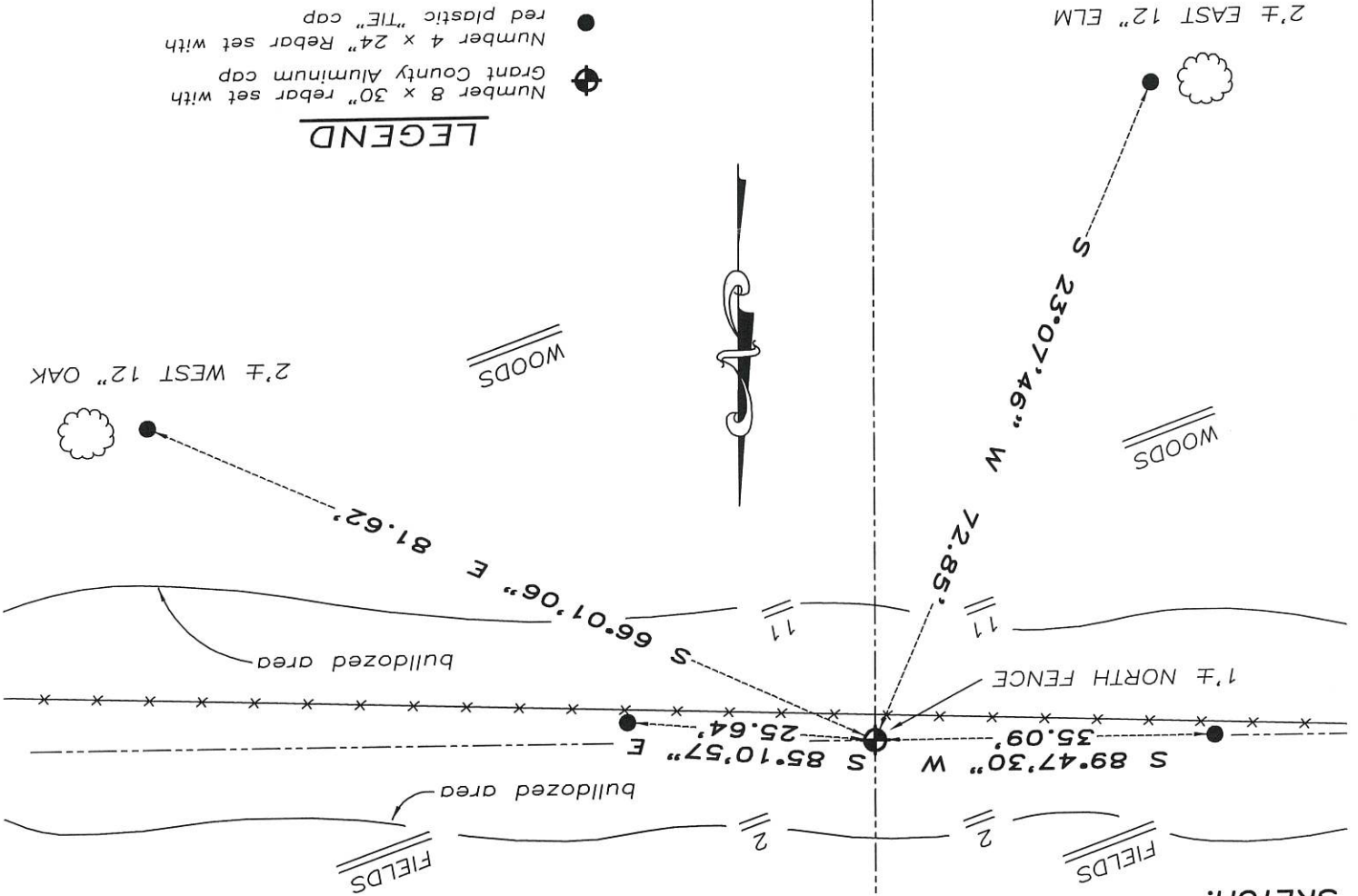
Corner was originally set in 1833 by Clark. An undated and unsigned survey was performed in Section 11, T5N R3W. In 2000 Rossman set a No. 6 rebar at this location. No other record of the corner was found.

CORNER EVIDENCE FOUND

I was unable to locate any evidence of the original or subsequent surveys. I retraced the location established by Rossman by locating adjoining corners. Verified this location using EDM & GPS methods.

DESCRIPTION OF CORNER AND WITNESS MONUMENTS, references and accessories used to perpetuate the original or re-established location of this corner. Witnesses to monument location Bobby Sedgwick & Brad Digman & Shane Austin

SKETCH:



LEGEND

- ⊕ Number 8 x 30" rebar set with Grant County Aluminum cap
- Number 4 x 24" Rebar set with red plastic "TIE" cap
- x— Approximate existing fence

NOT TO SCALE



Austin Engineering, Inc.
 4211 HWY 81 E, LANCASTER, WI 53813
 PHONE 608-723-6363 FAX 608-723-6702

JOB NUMBER 075238
 FIELDBOOK: TDSR, 2705
 G:\T5NR3W\02
 H:\TIE\T5NR3W\24

DRAWN BY: SW AUSTIN
 APPROVED: LL AUSTIN