

# FOR GRANT COUNTY, WISCONSIN

Note: This form is intended and designed to fulfill all requirements of Wisconsin Administrative Code, Chapter AE-7.08, U.S. Public Land Survey Monument Record (3)(a)(b)(c)(d)(e)(f)(g)(h)(i). Use additional sheets if necessary.

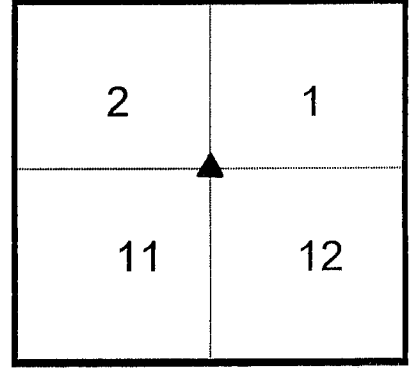
(a) The X Section, One Quarter corner common to Sections \_\_1, 2, 11, 12.

Township(s) 5 North, Range(s) 03 West.

State Plane Coordinates: N \_\_\_\_\_

Datum: \_\_\_\_\_ E \_\_\_\_\_

TOWN OF NORTH LANCASTER

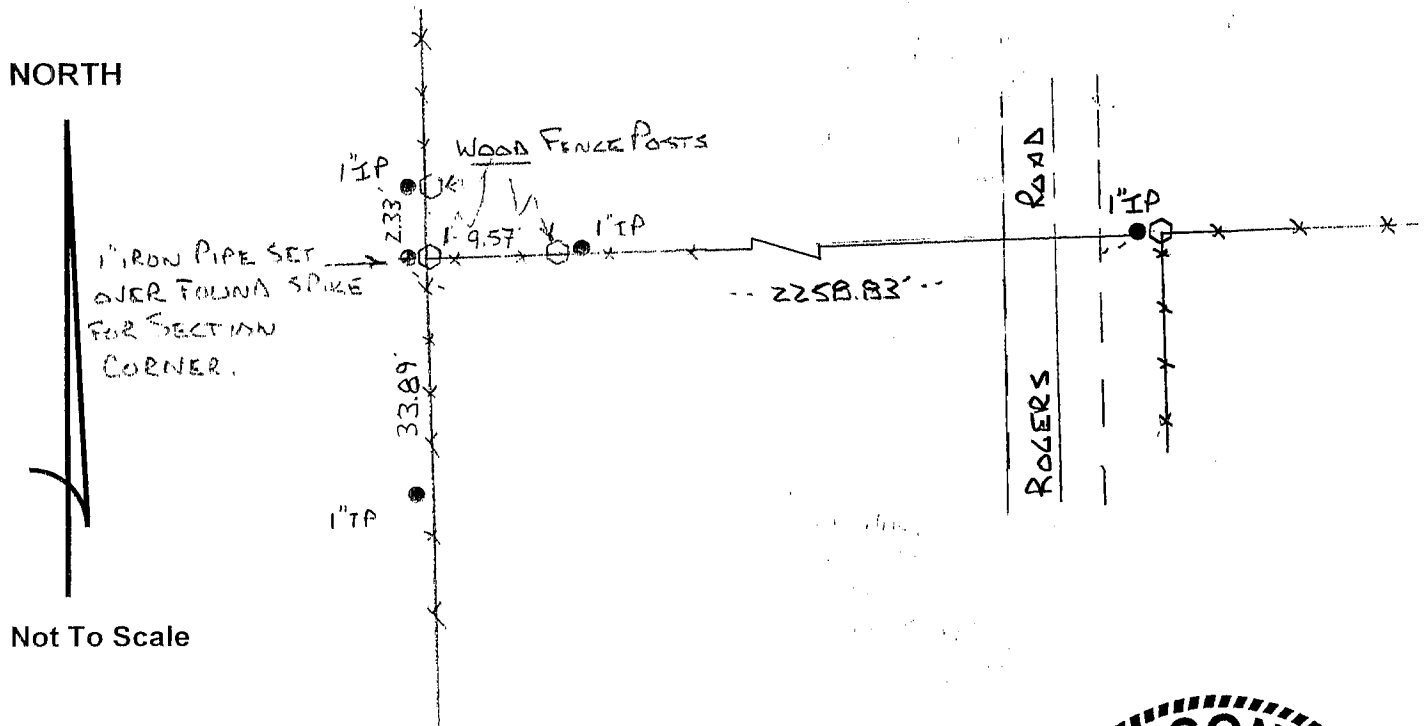


T5N R3W

(b)(f)(h) Description of monument found at this corner and if it was accepted, state all evidence (material, testimonial, occupational, plats records, other monuments) used as a basis for accepting. If not accepted or nothing was found, state evidence used as basis for establishing location and what was set. If re-established through lost corner proportionate methods, indicate all monuments, distances and directions used.

Found a large spike in the ground at the corner position. Position is at a fence intersection, with fence running North, South, and East. Measured distance to Southeast corner of Section 1 is 5326.78 feet. Government notes show distance to be 80.17 chains.

(c)(d)(e) Plan view of corner with ties to at least four (4) witness monuments. If in disagreement with previously established corner, show the distances between the two corners and also indicate ties to disputed corner.



Not To Scale

(I) Certify that the corner location on this record was determined by me or under my direction and control and that this U.S. Public Land survey Monument Record is correct and complete to the best of my knowledge and belief.



Harvey G. Johnson  
Signature

6/17/04  
Date

Filed for record in Grant County Surveyor's Office on \_\_\_\_\_ INDEX NO. 23