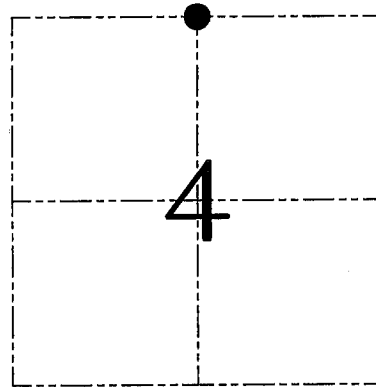


U.S. PUBLIC LAND SURVEY MONUMENT RECORD – GRANT COUNTY, WI
Section 4, Town 5 North Range 3 West, Town of North Lancaster

CERTIFICATE

I, Larry L. Austin, do hereby certify that the corner location on this record was determined by me and/or under my direct supervision and that this U.S. public land survey monument record is correct and complete to the best of my knowledge and belief.

Larry L. Austin
 Larry L. Austin, S-1903



● = CORNER LOCATION

HISTORY OF CORNER ESTABLISHMENT

Corner was never originally set. In 1859 Blauding tied to the corner with no mention of monument. No recent record of the corner was found.

DESCRIPTION OF CORNER EVIDENCE FOUND

Corner was reset based on an existing North-South fence. This location fit other corners in the area. Verified this location using EDM & GPS methods.

DESCRIPTION OF CORNER AND WITNESS MONUMENTS, references and accessories used to perpetuate the original or re-established location of this corner. Witnesses to corner location Bobby Sedgwick & Brad Digman & Shane Austin

SKETCH:

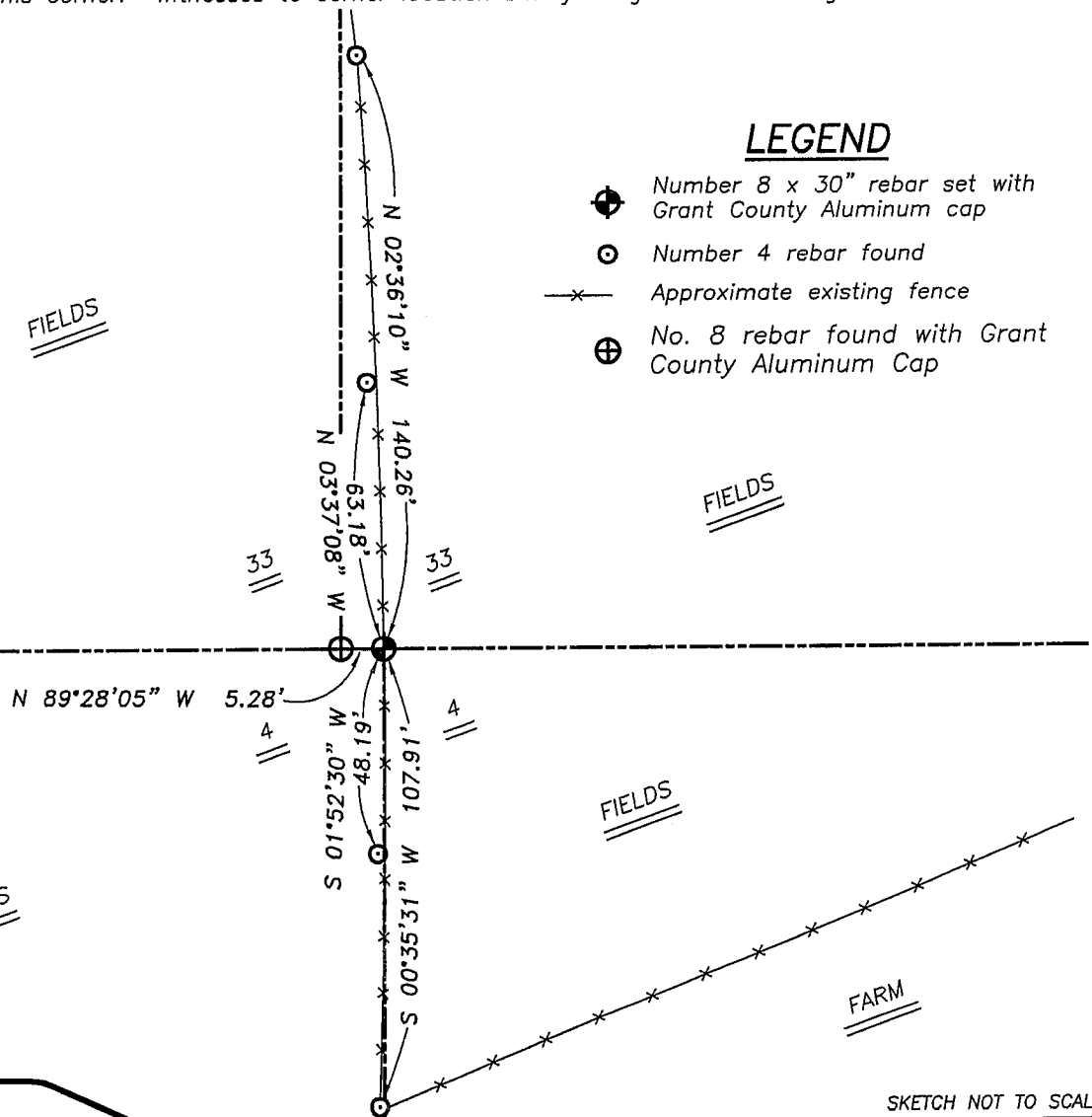


FIELDS

FIELDS

LEGEND

- Number 8 x 30" rebar set with Grant County Aluminum cap
- ⊙ Number 4 rebar found
- x— Approximate existing fence
- ⊕ No. 8 rebar found with Grant County Aluminum Cap



SKETCH NOT TO SCALE



Austin Engineering LLC

4211 HWY 81 E, LANCASTER, WI 53813
 PHONE 608-723-6363 FAX 608-723-6702

JOB NUMBER 06S172
 FIELDBOOK: TDSR, 2705
 G:\T6NR3W\33A
 H:\TIE\T5NR3W\08

DRAWN BY: SW AUSTIN
 APPROVED: LL AUSTIN