

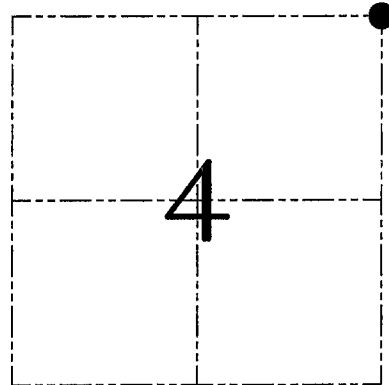
**U.S. PUBLIC LAND SURVEY MONUMENT RECORD – GRANT COUNTY, WI**

**Section 4, Town 5 North Range 3 West, Town of North Lancaster**

CERTIFICATE

I, Larry L. Austin, do hereby certify that the corner location on this record was determined by me and/or under my direct supervision and that this U.S. public land survey monument record is correct and complete to the best of my knowledge and belief.

*Larry L. Austin*  
 Larry L. Austin, S-1903



● = CORNER LOCATION

HISTORY OF CORNER ESTABLISHMENT

Corner was originally set in 1832 by Parke. In 1859 Blauding tied to the corner with no mention of monument. No recent record of the corner was found.

DESCRIPTION OF CORNER EVIDENCE FOUND

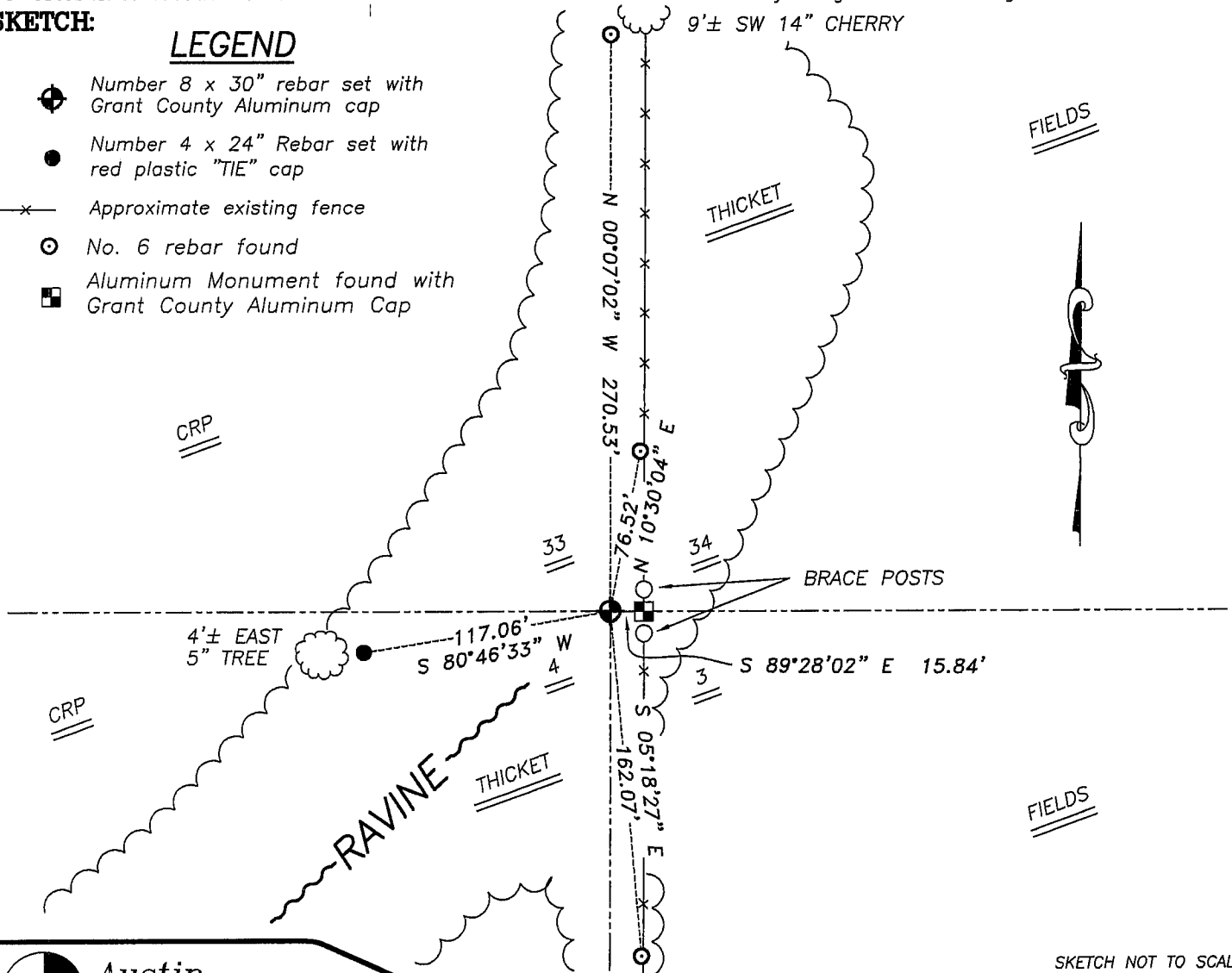
I set the corner at the recorded offset from the existing Southeast corner of Section 33, T6N R4W. Verified this location using EDM & GPS methods.

DESCRIPTION OF CORNER AND WITNESS MONUMENTS, references and accessories used to perpetuate the original or re-established location of this corner. Witnesses to corner location Bobby Sedgwick & Brad Digman & Shane Austin

**SKETCH:**

**LEGEND**

- ⊕ Number 8 x 30" rebar set with Grant County Aluminum cap
- Number 4 x 24" Rebar set with red plastic "TIE" cap
- x— Approximate existing fence
- No. 6 rebar found
- Aluminum Monument found with Grant County Aluminum Cap



SKETCH NOT TO SCALE



**Austin Engineering LLC**

4211 HWY 81 E, LANCASTER, WI 53813  
 PHONE 608-723-6363 FAX 608-723-6702

JOB NUMBER 06S172  
 FIELDBOOK: TDSR, 2705  
 G:\T6NR3W\33A  
 H:\TIE\T5NR3W\07

DRAWN BY: SW AUSTIN  
 APPROVED: LL AUSTIN

**07**