

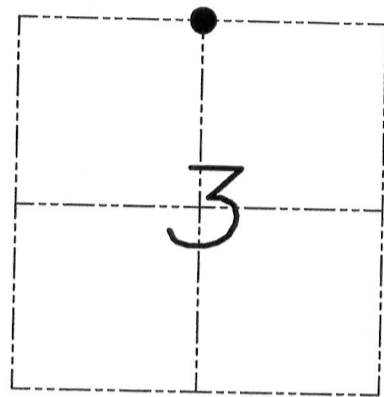
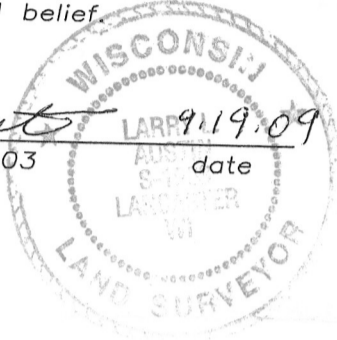
# U.S. PUBLIC LAND SURVEY MONUMENT RECORD

Section 3, Town 5 North Range 3 West, Town of North Lancaster, Grant County, Wisconsin

## CERTIFICATE

I, Larry L. Austin, do hereby certify that the corner location on this record was determined by me and/or under my direct supervision and that this U.S. public land survey monument record is correct and complete to the best of my knowledge and belief.

*Larry L. Austin*  
 Larry L. Austin, S-1903      9/19/09      date



● = CORNER LOCATION

## HISTORY OF CORNER

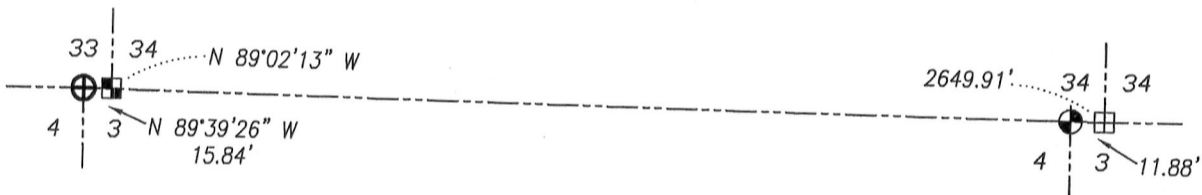
Corner was never originally set.  
 No other record of the corner was found.

## CORNER EVIDENCE FOUND

Corner was set at the proportional offset between the South 1/4 corner of Section 34 and the Southwest corner of Section 34. Verified location by E.D.M. and G.P.S. methods.

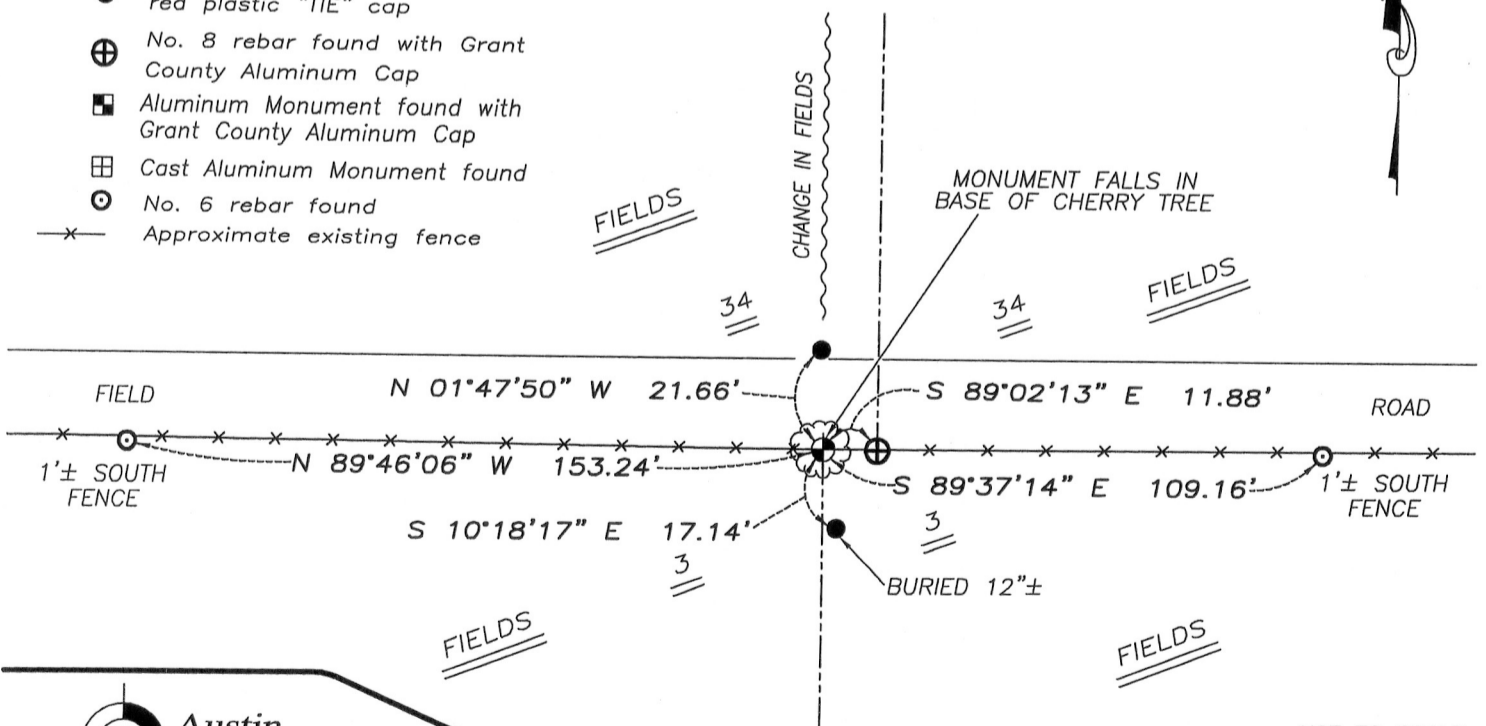
DESCRIPTION OF CORNER AND WITNESS MONUMENTS, references and accessories used to perpetuate the original or re-established location of this corner. Witnesses to monument location Bobby Sedgwick & Brad Digman & Shane Austin

## SKETCH:



## LEGEND

- ⊕ Number 8 x 30" rebar set with Grant County Aluminum cap
- Number 4 x 24" Rebar set with red plastic "TIE" cap
- ⊕ No. 8 rebar found with Grant County Aluminum Cap
- ⊞ Aluminum Monument found with Grant County Aluminum Cap
- ⊞ Cast Aluminum Monument found
- ⊙ No. 6 rebar found
- x- Approximate existing fence



NOT TO SCALE

**Austin Engineering LLC**  
 austinengineeringllc.com

4211 HWY 81 E, LANCASTER, WI 53813  
 PHONE: 608-723-6363 FAX: 608-723-6702

JOB NUMBER 09S194-HELMS  
 FIELDBOOK: TDSR, 2810B  
 G:\T5NR3W\02  
 H:\TIE\T5NR3W\06

DRAWN BY: SW AUSTIN  
 APPROVED: LL AUSTIN

06

JAN 23 2012