

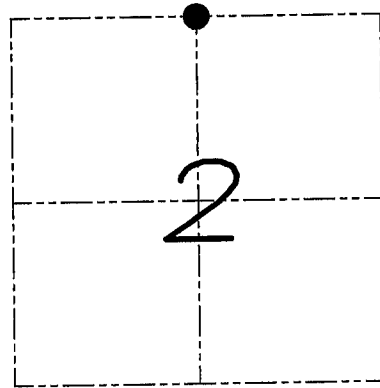
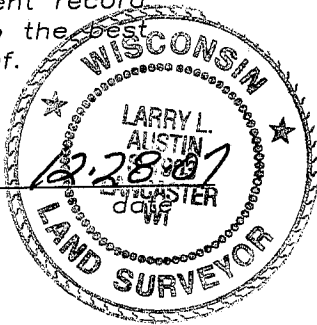
U.S. PUBLIC LAND SURVEY MONUMENT RECORD

Section 2, Town 5 North Range 3 West, Town of North Lancaster, Grant County, Wisconsin

CERTIFICATE

I, Larry L. Austin, do hereby certify that the corner location on this record was determined by me and/or under my direct supervision and that this U.S. public land survey monument record is correct and complete to the best of my knowledge and belief.

Larry L. Austin
Larry L. Austin, S-1903



● = CORNER LOCATION

HISTORY OF CORNER

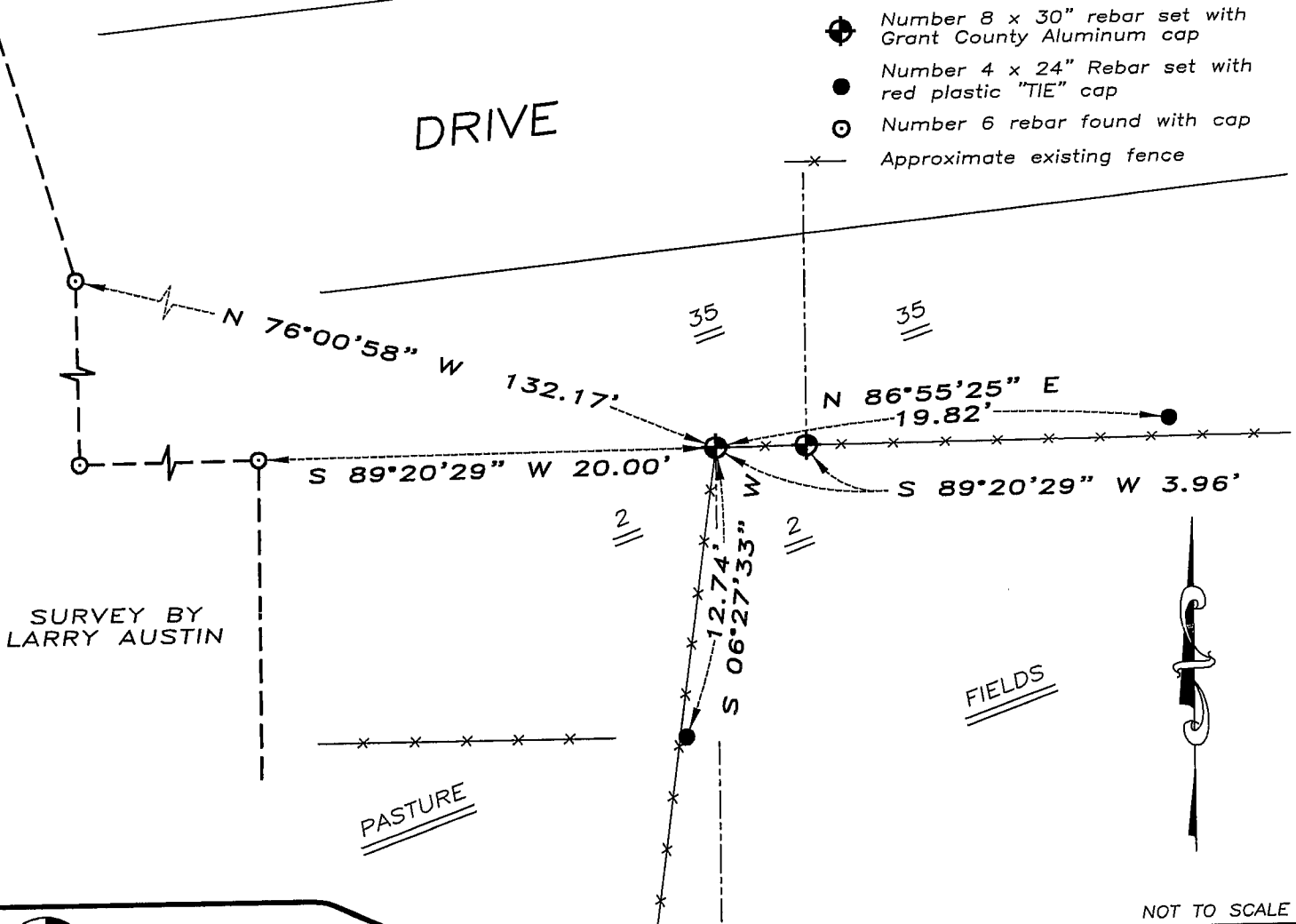
Corner was never originally set.
No other record of the corner was found.

CORNER EVIDENCE FOUND

I reset the corner based on occupied location.
Verified this location using EDM & GPS methods.

DESCRIPTION OF CORNER AND WITNESS MONUMENTS, references and accessories used to perpetuate the original or re-established location of this corner. Witnesses to monument location Bobby Sedgwick & Brad Digman & Shelby Blindert

SKETCH:



LEGEND

- ⊕ Number 8 x 30" rebar set with Grant County Aluminum cap
- Number 4 x 24" Rebar set with red plastic "TIE" cap
- Number 6 rebar found with cap
- × Approximate existing fence

NOT TO SCALE



Austin Engineering LLC

4211 HWY 81 E, LANCASTER, WI 53813
PHONE 608-723-6363 FAX 608-723-6702

JOB NUMBER 07S238
FIELDBOOK: TDSR, 2705
G:\T5NR3W\02
H:\TIE\T5NR3W\04

DRAWN BY: SW AUSTIN
APPROVED: LL AUSTIN

04