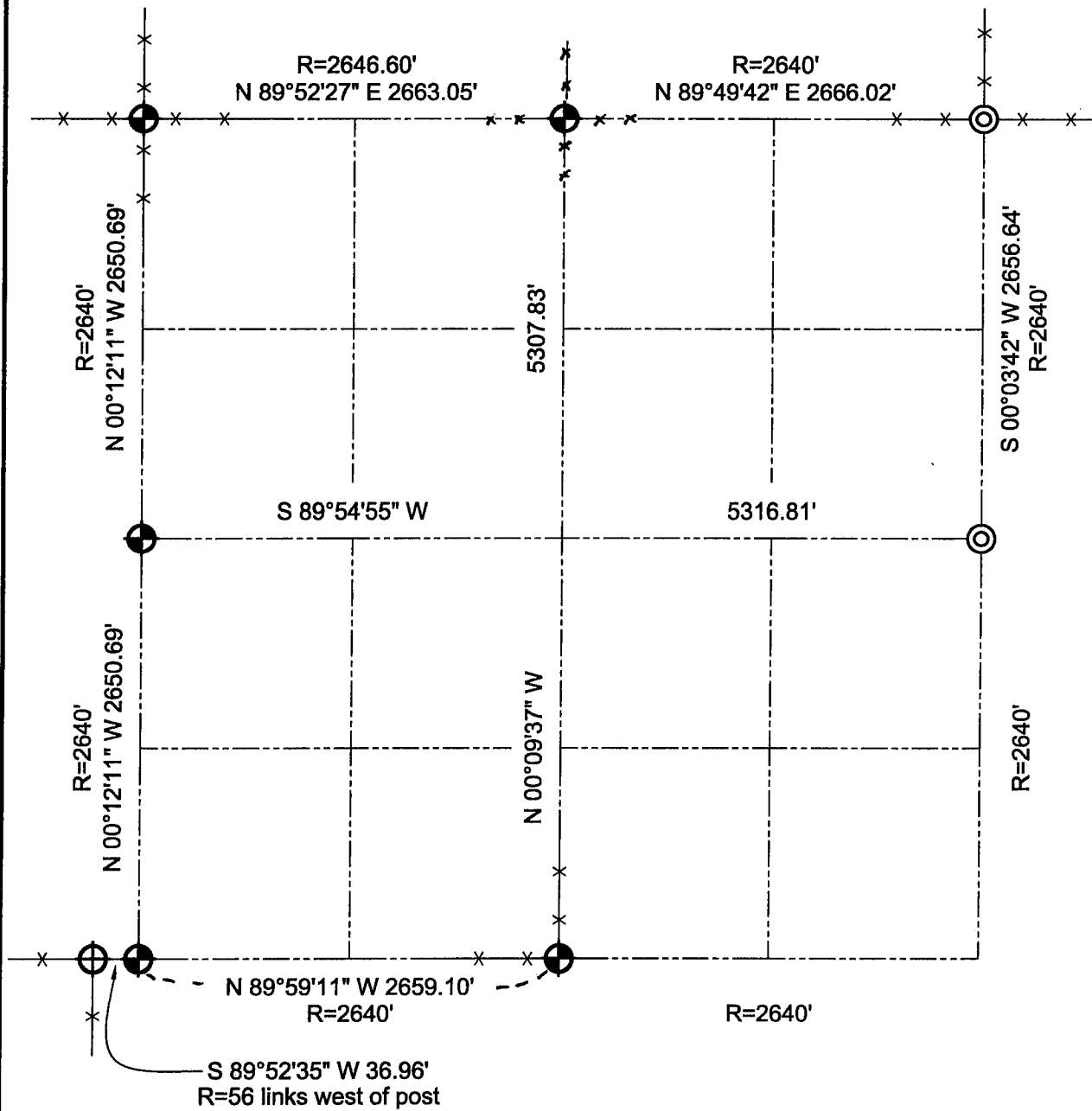





GRANT COUNTY SECTION SUMMARY

35 - 5N - 2W
SECTION TOWN RANGE

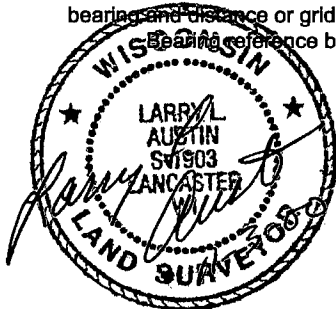


LEGEND

-  Number 8 x 30" rebar set with Grant County Aluminum Cap
-  Aluminum monument found
-  No. 6 iron bar found

NOTE:

Relationships of all section corners to other section corners shall be shown hereon by bearing and distance or grid coordinates. Bearing reference below~



Bearings referenced to the North-South 1/4 line of Section 35, which is assumed to bear N 00°09'37" W.