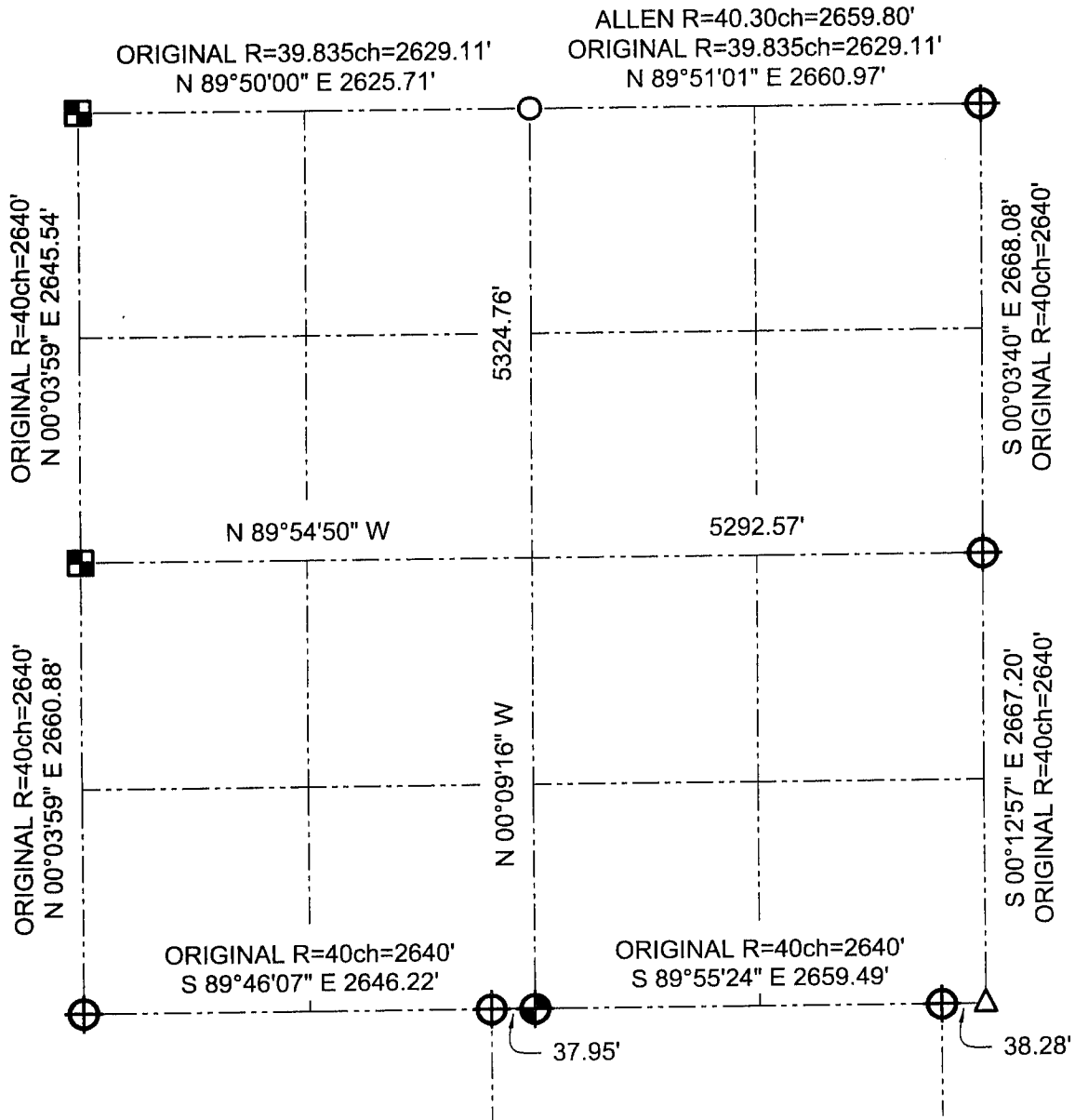


# GRANT COUNTY

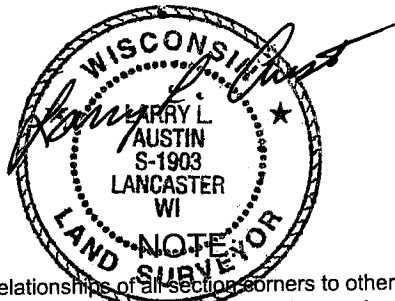
## SECTION SUMMARY

33
-
5N
-
2W  
*SECTION*
*TOWN*
*RANGE*



### LEGEND

- Number 8 x 30" rebar set with Grant County Aluminum Cap
- Number 8 rebar found with Grant County Aluminum Cap
- Aluminum monument found
- Railroad spike found
- 2" pipe post in concrete found



Relationships of all section corners to other section corners shall be shown hereon by bearing and distance or grid coordinates.  
 ~Bearing reference below~



Bearings referenced to the East-West 1/4 line of Section 33, which is assumed to bear S 89°54'50" E.

**AUSTIN ENGINEERING, LLC**  
 4211 HWY 81 E, LANCASTER, WI 53813  
 PHONE 608-723-6363 FAX 608-723-6702

FIELDBOOK: SDR33, 2042  
 G:\T5NR2W\32  
 C:\SC14\SWA\TIE\T5NR2W\33SUM

DRAWN BY: SW AUSTIN  
 APPROVED: LL AUSTIN  
 CREW: BS - SB - SA - TF