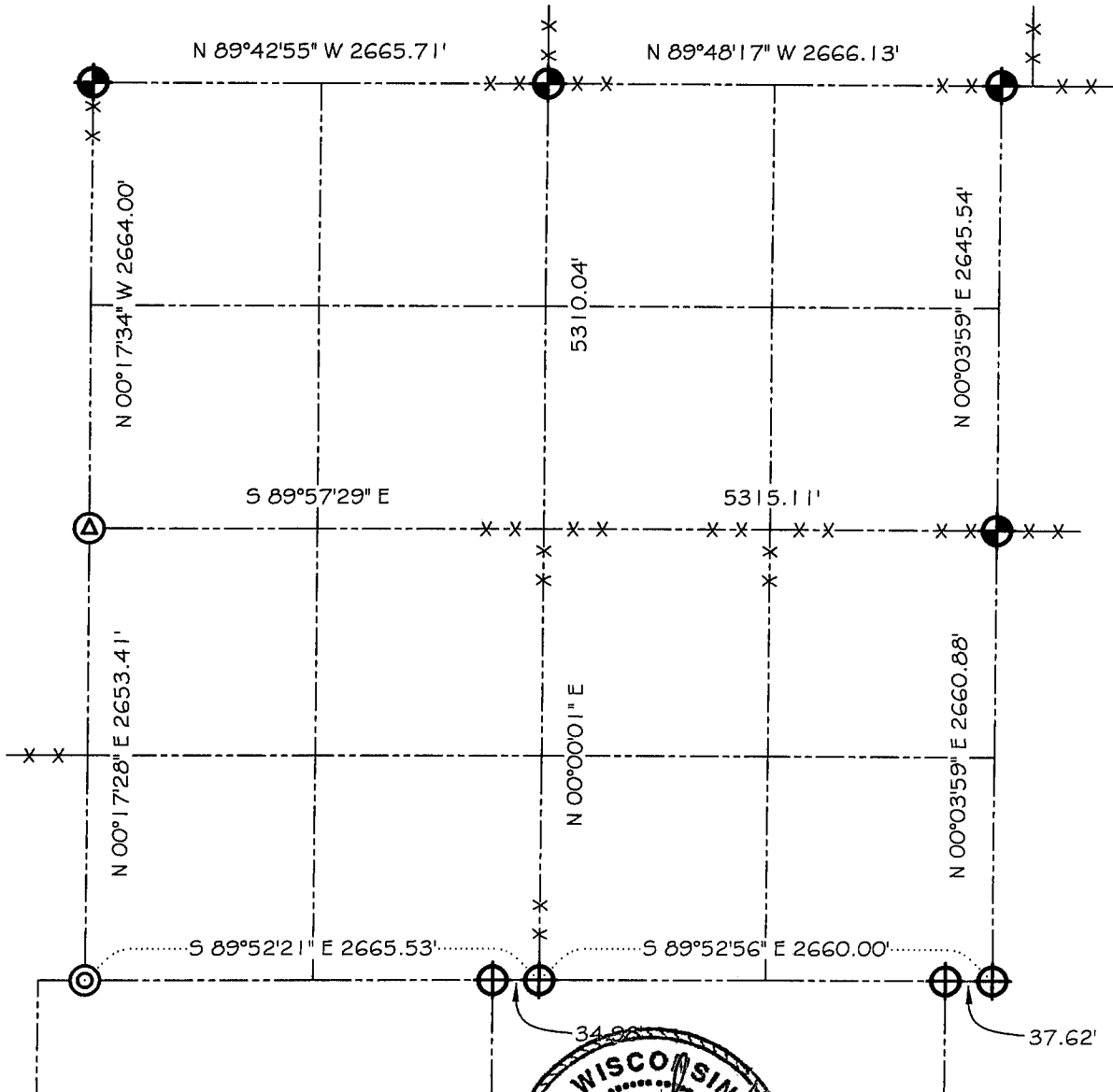


GRANT COUNTY SECTION SUMMARY

$\frac{32}{SECTION} - \frac{5N}{TOWN} - \frac{2W}{RANGE}$



LEGEND

- NO. 8 X 30" REBAR SET WITH GRANT COUNTY ALUMINUM CAP
- GRANT COUNTY ALUMINUM MONUMENT FOUND
- 3" PIPE POST IN CONCRETE FOUND
- RAILROAD SPIKE FOUND

NOTE:

Relationships of all section corners to other section corners shall be shown hereon by bearing and distance or grid coordinates
Show or describe bearing reference



Bearings referenced to the East-West 1/4 line of Section 32,
which is assumed to bear S 89°57'29" E.