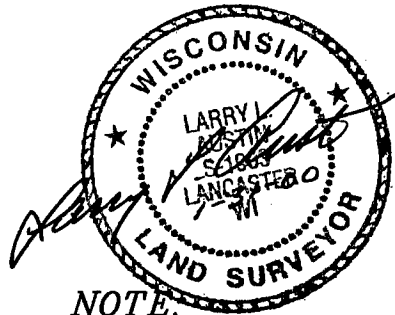
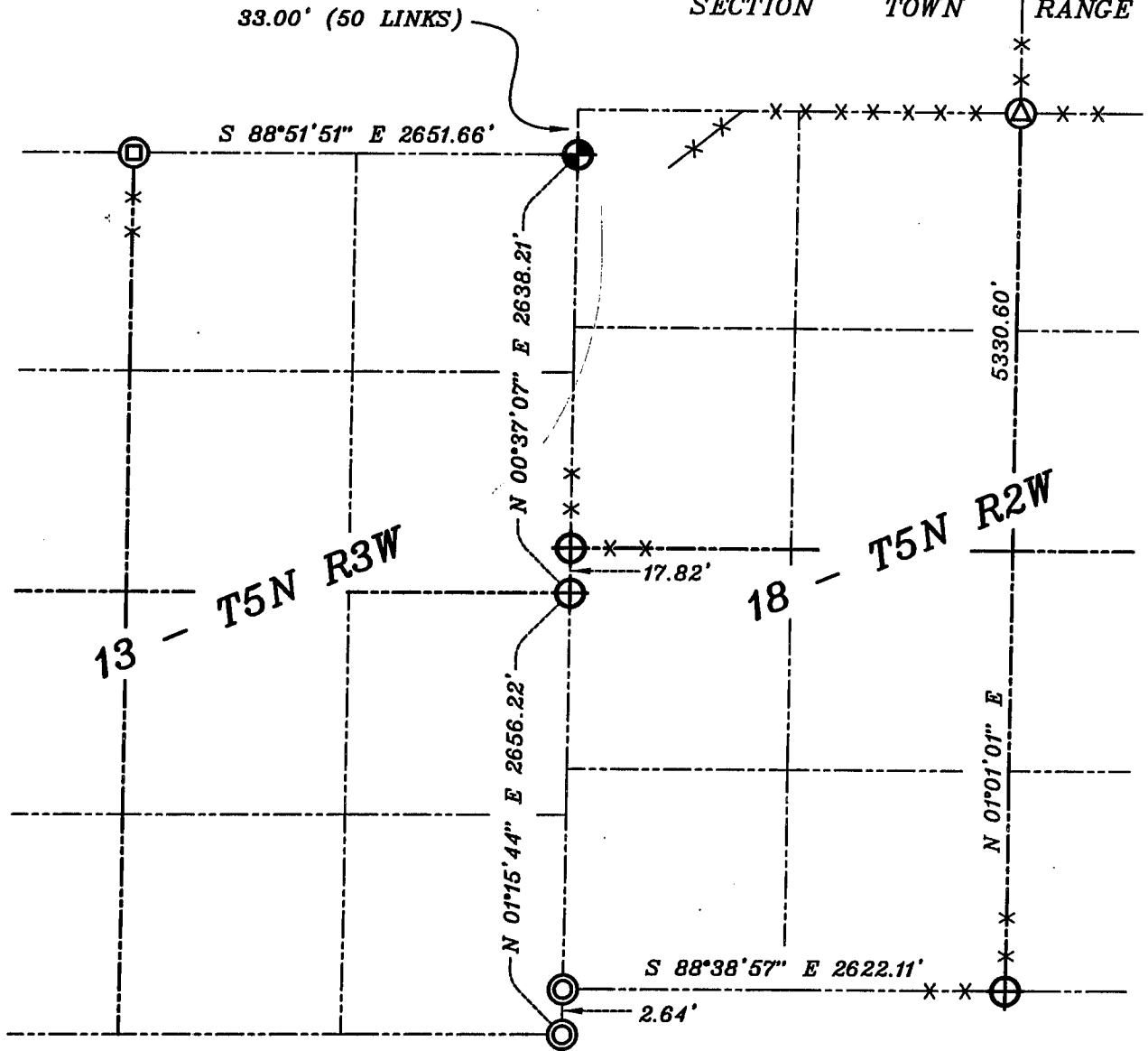


MAR 24 2000

# GRANT COUNTY DOUBLE SECTION SUMMARY

18	-	5N	-	2W
13	-	5N	-	3W
SECTION		TOWN		RANGE



### LEGEND

- ⊕ NO. 8 X 30" REBAR SET WITH GRANT COUNTY ALUMINUM CAP
- ⊕ ALUMINUM MONUMENT FOUND
- ⊙ NUMBER 6 IRON BAR FOUND
- ⊙ NUMBER 10 IRON BAR FOUND
- ⊙ 1" IRON PIPE FOUND

### NOTE.

Relationships of all section corners to other section corners shall be shown hereon by bearing and distance or grid coordinates  
Show or describe bearing reference



BEARINGS REFERENCED TO THE EAST LINE OF THE SOUTHEAST QUARTER OF SECTION 13, WHICH IS ASSUMED TO BEAR N 01°15'44" E.