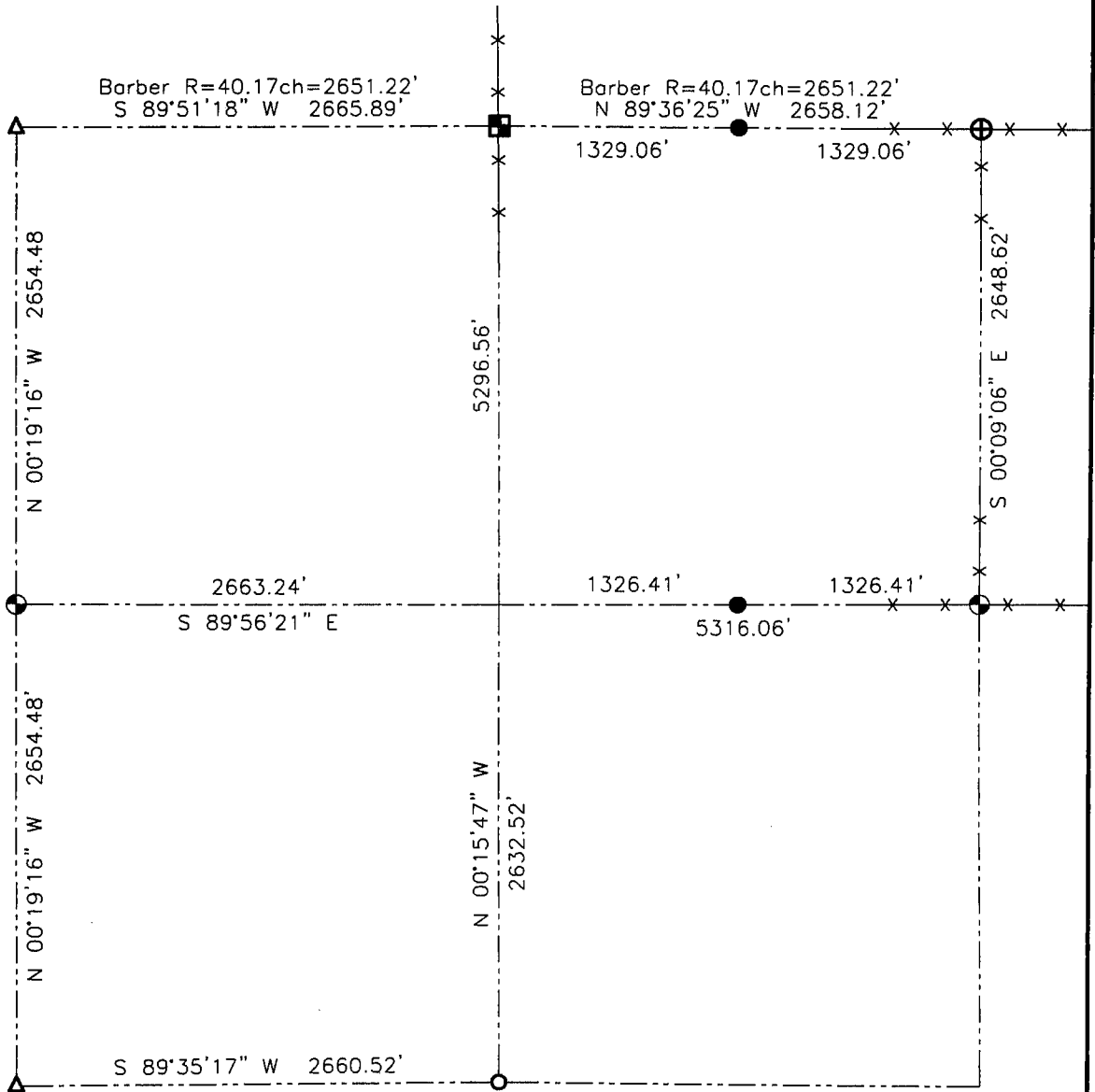


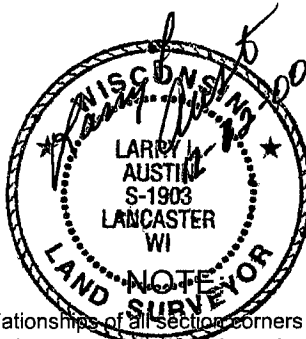
GRANT COUNTY SECTION SUMMARY

16 - 5N - 2W
SECTION TOWN RANGE



LEGEND

- No. 6 rebar found
- ⊕ No. 7 rebar found
- △ 1" dia. iron pipe found
- D.O.T. Cast Aluminum Monument found
- ⊙ No. 8 x 30" rebar set with Grant County Aluminum Cap
- No. 6 x 24" rebar set with yellow plastic survey cap



Relationships of all section corners to other section corners shall be shown hereon by bearing and distance or grid coordinates.
 ~Bearing reference below~

Bearings referenced to the North line of the NE 1/4 of Section 16 which is assumed to bear N 89°36'25" W.



AUSTIN ENGINEERING, LLC
 4211 HWY 81 E, LANCASTER, WI 53813
 PHONE 608-723-6363 FAX 608-723-6702

FIELDBOOK: SDR33, 2032
 G:\T5NR2W\09
 C:\SC14\SWA\T5NR2W\16SUM

DRAWN BY: SW AUSTIN
 APPROVED: LL AUSTIN
 CREW: BS - SB - SA - TF