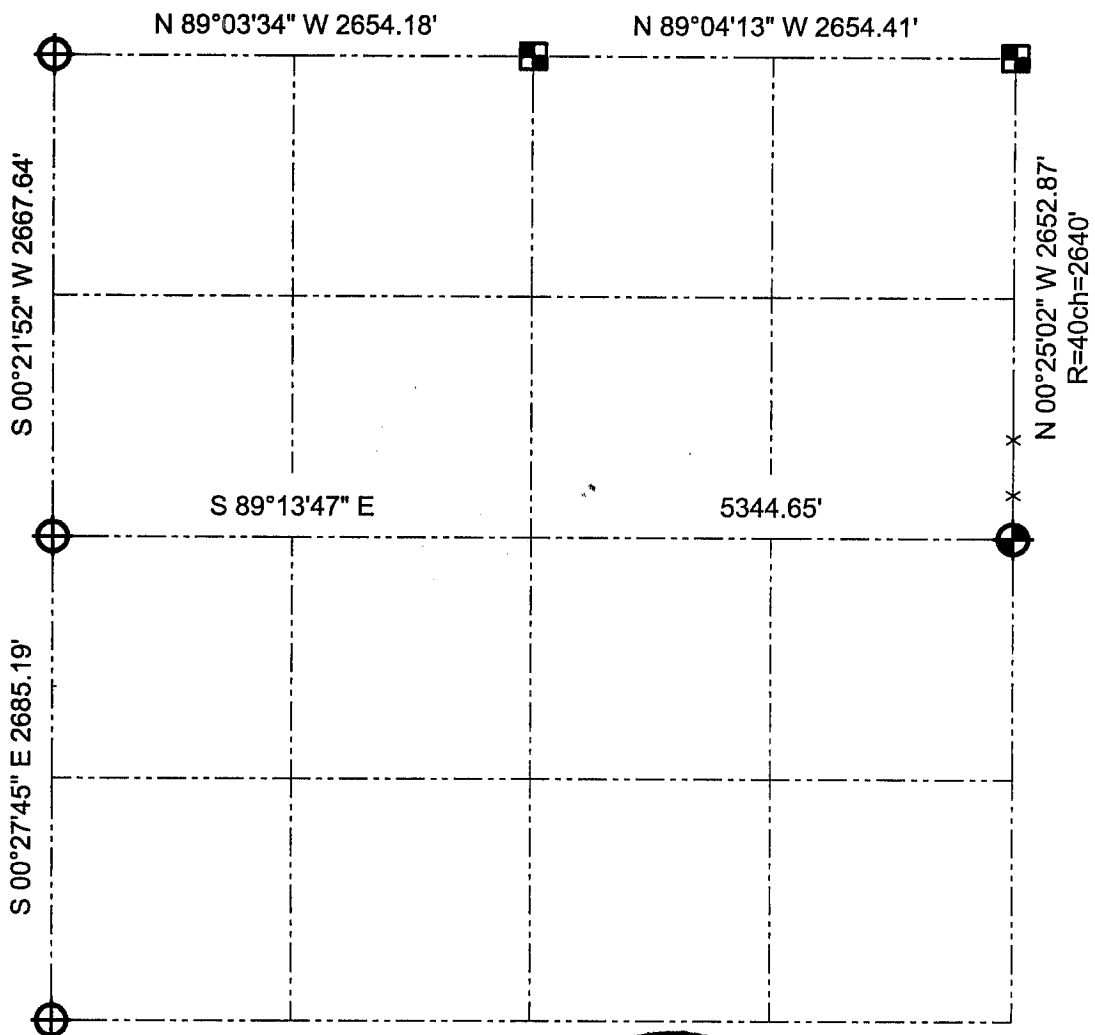





# GRANT COUNTY SECTION SUMMARY

$\frac{12}{\text{SECTION}} - \frac{5N}{\text{TOWN}} - \frac{2W}{\text{RANGE}}$



### LEGEND

-  Number 8 x 30" rebar set with Grant County Aluminum Cap
-  Grant County Aluminum monument found
-  Number 8 rebar found with Grant County Aluminum Cap

### NOTE:

Relationships of all section corners to other section corners shall be shown hereon by bearing and distance or grid coordinates.  
~Bearing reference below~



Bearings referenced to the East-West 1/4 line of  
Section 12, which is assumed to bear S 89°13'47" E.

**AUSTIN ENGINEERING, LLC**  
4211 HWY 81 E, LANCASTER, WI 53813  
PHONE 608-723-6363 FAX 608-723-6702

FIELDBOOK: SDR33, 2040  
G:\T5NR2W\11  
C:\SC14\SWA\TIE\T5NR2W\12SUM

DRAWN BY: SW AUSTIN  
APPROVED: LL AUSTIN  
CREW: BS - SB - SA - TF