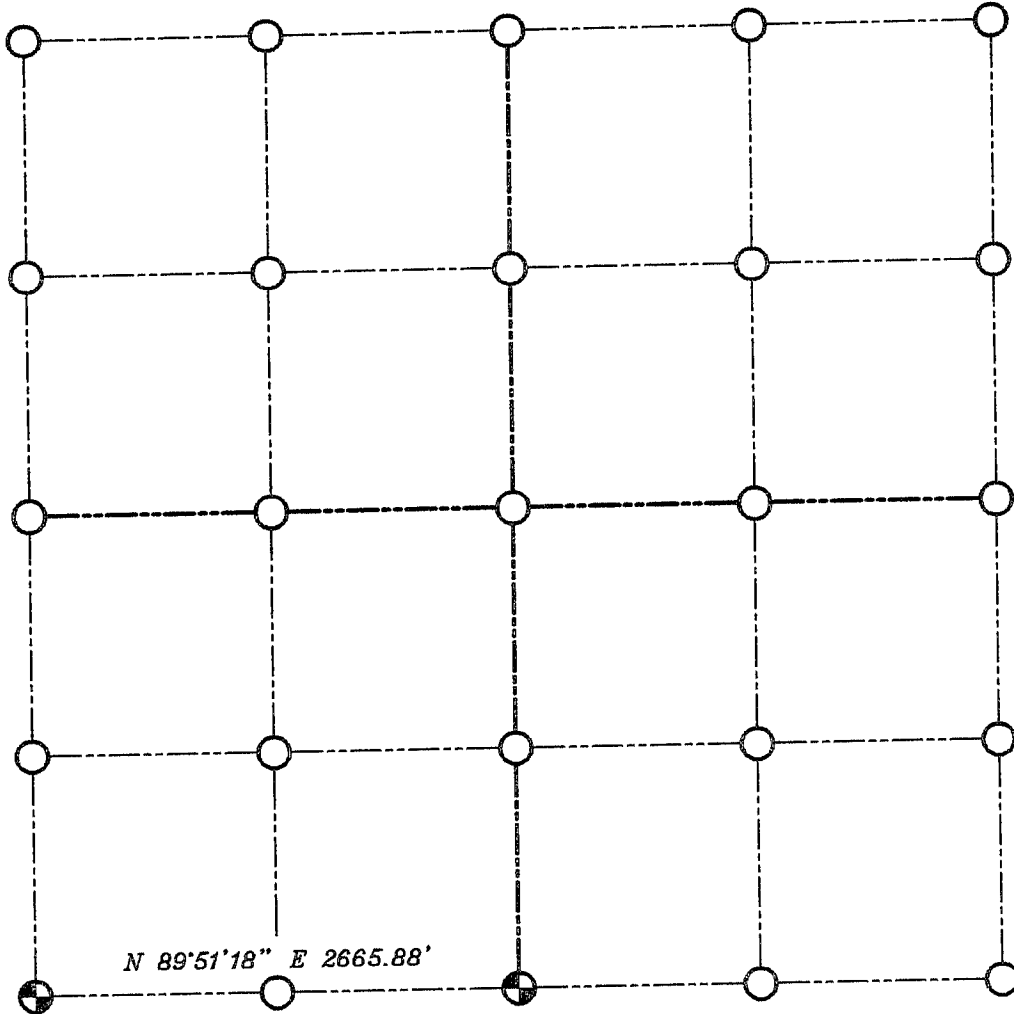



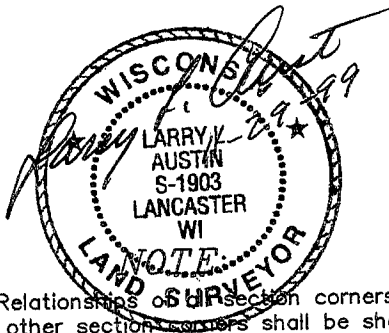
# GRANT COUNTY SECTION SUMMARY

$\frac{9}{\text{SECTION}} - \frac{5N}{\text{TOWN}} - \frac{2W}{\text{RANGE}}$



### LEGEND

 NO. 8 X 30" REBAR SET WITH GRANT COUNTY ALUMINUM CAP



**NOTE:**  
 Relationships of all section corners to other section corners shall be shown hereon by bearing and distance or grid coordinates  
 Show or describe bearing reference



BEARINGS REFERENCED TO THE SOUTH LINE OF THE  
 SOUTHWEST QUARTER OF SECTION 9, WHICH IS ASSUMED TO BEAR N 89°51'18" E.