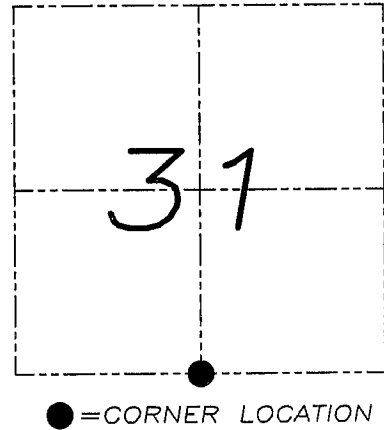
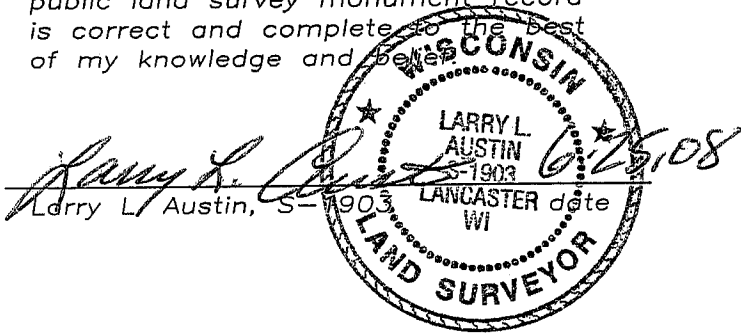


U.S. PUBLIC LAND SURVEY MONUMENT RECORD

Section 31, Town 5 North Range 2 West, Town of Liberty, Grant County, Wisconsin

CERTIFICATE

I, Larry L. Austin, do hereby certify that the corner location on this record was determined by me and/or under my direct supervision and that this U.S. public land survey monument record is correct and complete to the best of my knowledge and belief.



HISTORY OF CORNER

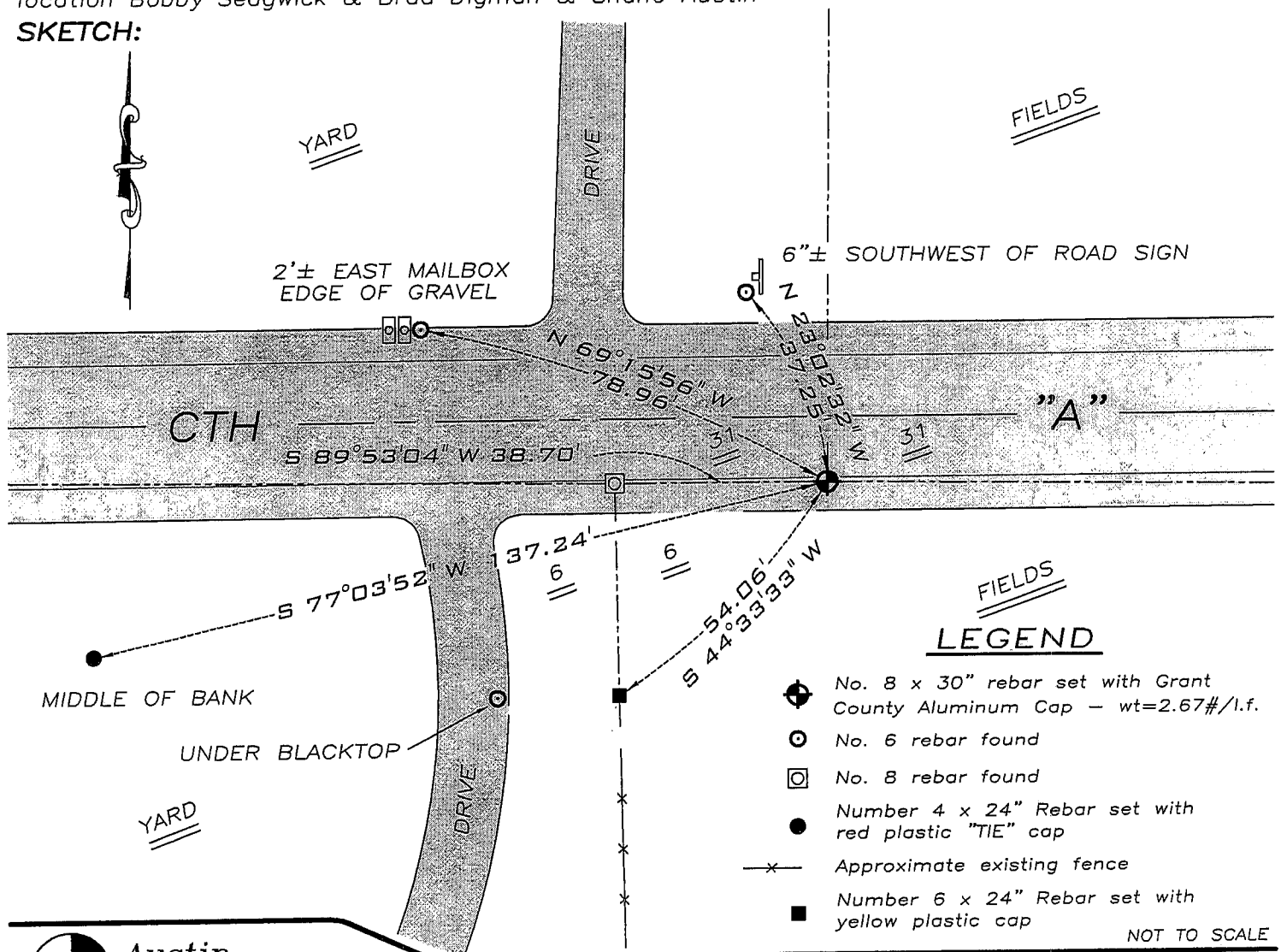
Corner was originally set by Lyon. In 1981 Davis set a No. 10 rebar. No other record of the corner was found.

CORNER EVIDENCE FOUND

I was unable to locate the No. 10 rebar. I reset a monument at the Davis location. This location does NOT fit the recorded offset. Verified this location using EDM & GPS methods.

DESCRIPTION OF CORNER AND WITNESS MONUMENTS, references and accessories used to perpetuate the original or re-established location of this corner. Witnesses to monument location Bobby Sedgwick & Brad Digman & Shane Austin

SKETCH:



LEGEND

- No. 8 x 30" rebar set with Grant County Aluminum Cap - wt=2.67#/l.f.
- No. 6 rebar found
- No. 8 rebar found
- Number 4 x 24" Rebar set with red plastic "TIE" cap
- Approximate existing fence
- Number 6 x 24" Rebar set with yellow plastic cap

NOT TO SCALE



Austin Engineering LLC

4211 HWY 81 E, LANCASTER, WI 53813
PHONE 608-723-6363 FAX 608-723-6702

JOB NUMBER 08S029-LENZ
FIELDBOOK: TDSR, 2802
G:\T5NR2W\32
H:\TIE\T5N2W\132

DRAWN BY: SW AUSTIN
APPROVED: LL AUSTIN