

Survey Monument Record

TYPE OF MONUMENT RAILROAD SPIKE  
 STATE PLANE COORDINATES: N \_\_\_\_\_  
 E \_\_\_\_\_

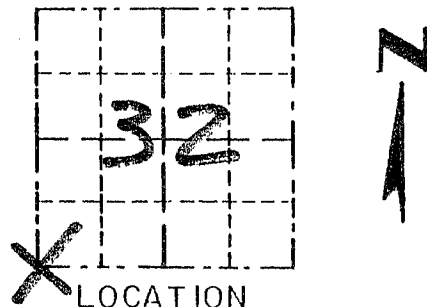
ELEVATION — M.S.L. DATUM: \_\_\_\_\_  
 THETA ANGLE: \_\_\_\_\_  
 FIELD BOOK: 95-05  
 PAGE: 24

CORNER NO. 131  
 SECTION 32  
 TOWN 5N  
 RANGE 2W

BASIS FOR MONUMENT LOCATION

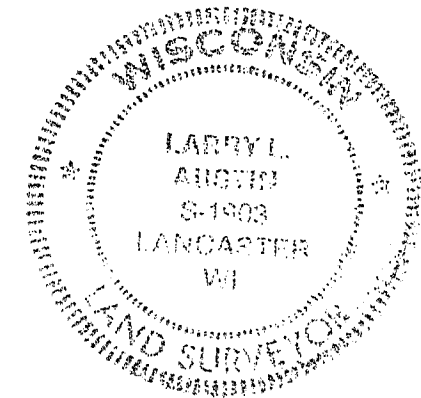
(Use reverse side if necessary)

CORNER SET IN 1832 BY  
 SIBLEY. NO RECORD FOUND  
 SINCE ORIGINAL SURVEY.  
 CORNER WAS SET AT AN  
 OCCUPIED LOCATION, VERIFIED  
 ITS LOCATION USING EDM  
 METHODS.



LOCATION  
 (Indicated by "X")

SEAL:



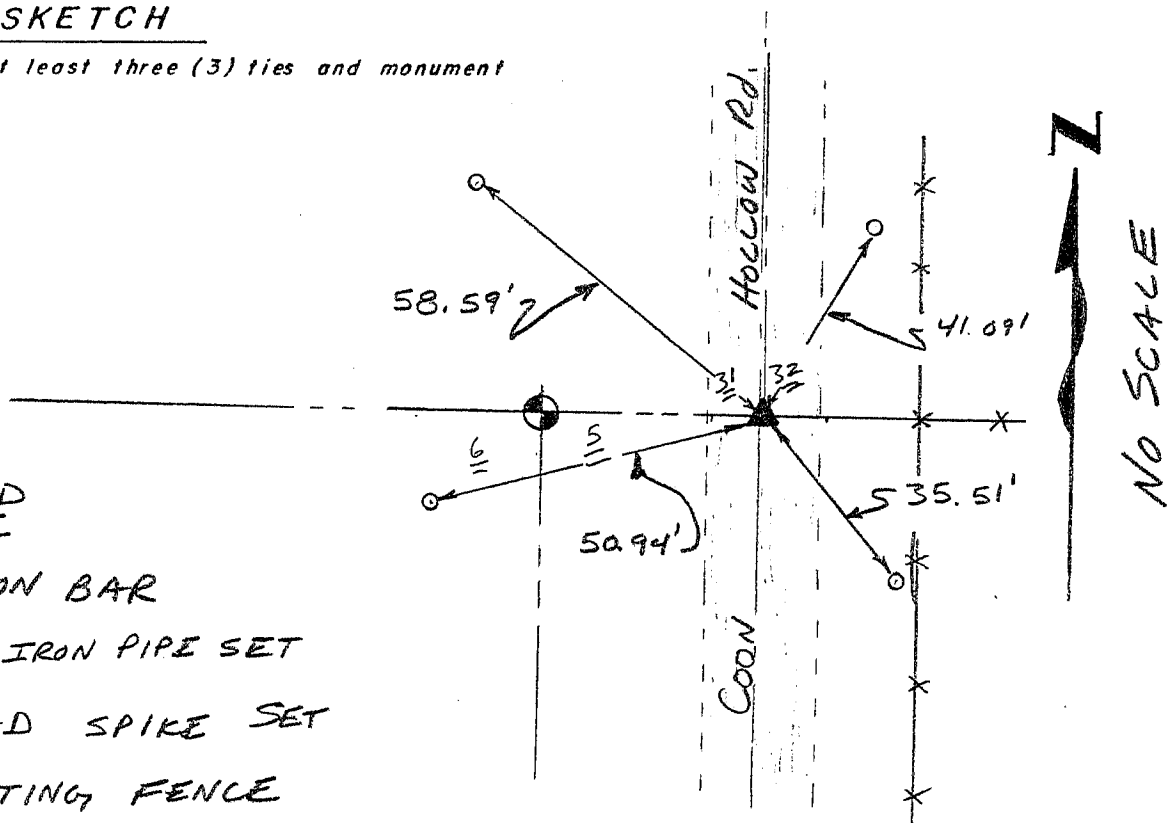
CERTIFIED CORRECT

*Larry L. Austin*  
 Registered Land Surveyor

DATE: 12/6/95

TIE SKETCH

Show at least three (3) ties and monument



LEGEND

- ⊕ 3/4" IRON BAR
- 1" x 12" IRON PIPE SET
- ▲ RAILROAD SPIKE SET
- EXISTING FENCE