

52130

# U.S. PUBLIC LAND SURVEY MONUMENT RECORD - GRANT COUNTY, WI

Section 32, Town 5 North Range 2 West, Town of Liberty (a)

NOTE: This form is intended and designed to fulfill all requirements of the Wisconsin Administrative Code Chapter A-E 7.08, U.S. Public Land Survey Monument Record (3) (a) (b) (c) (d) (e) (f) (g) (h) (i).

### CERTIFICATE: (i)

I, Aaron J. Austin, Wisconsin Professional Land Surveyor, do hereby certify that the corner location on this record was determined by me and/or under my direct supervision and that this U.S. Public Land Survey Monument Record is correct and complete to the best of my knowledge and belief.

Dated this 26th day of September, 2018.

*Aaron J. Austin*  
Aaron J. Austin, S-2922



Grant County Coordinates:  
NAD 83 (2011)  
Northing: 526,988.25  
Easting: 839,086.52

### HISTORY OF CORNER ESTABLISHMENT:

Larry Austin set an Aluminum Monument at the corner and prepared a Survey Monument Record dated 12-5-1995.

### DESCRIPTION OF CORNER EVIDENCE FOUND: (b) (f) (g) (h)

I found the Aluminum Monument and one witness corner as set by Larry Austin. I set three additional witness corners after I verified the monument's location with with G.P.S. and E.D.M. methods.

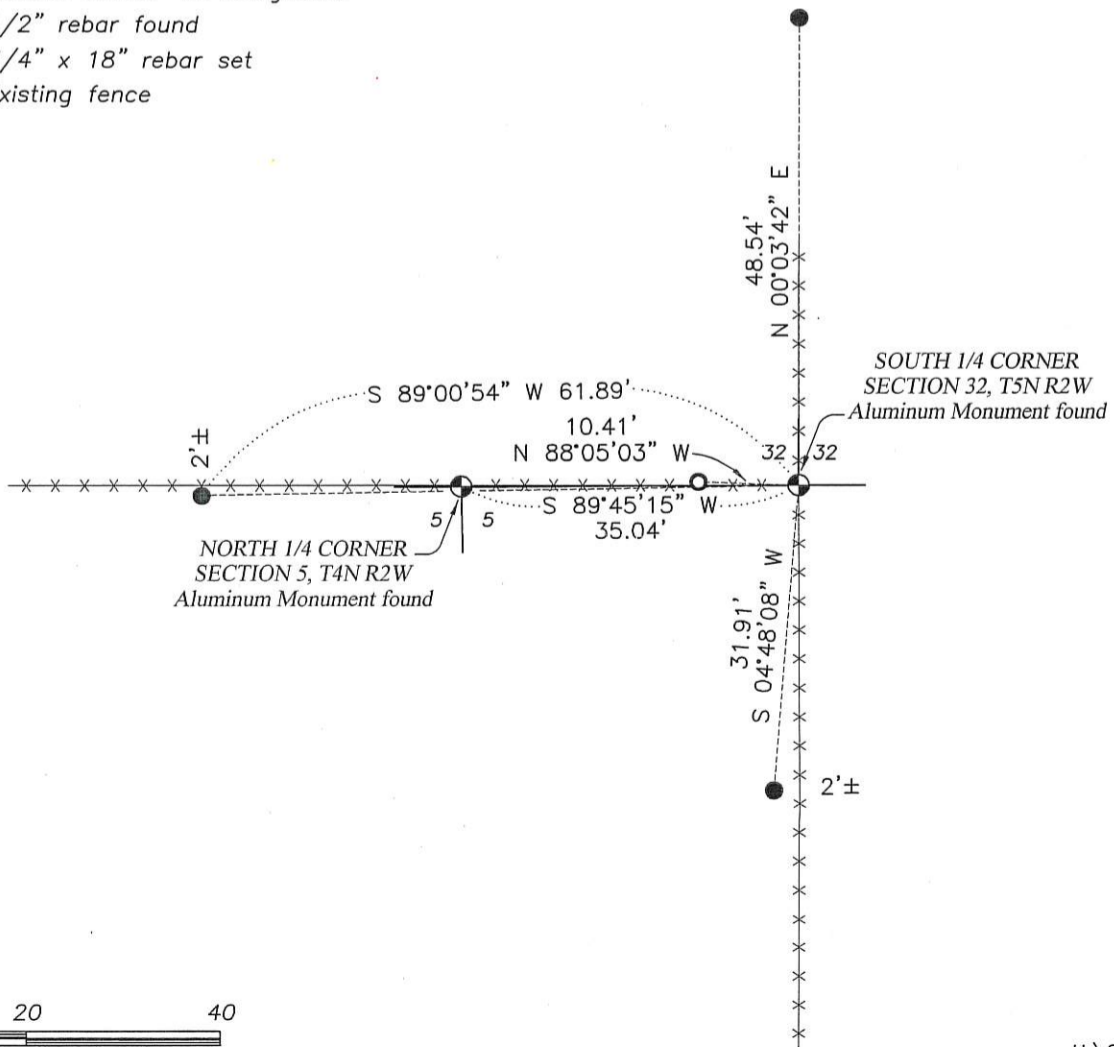
### DESCRIPTION OF CORNER AND WITNESS MONUMENTS, references and accessories used to perpetuate the original or re-established location of this corner. (c) (d) (e)

Witnesses to corner location Shane Austin, Owen Austin.

### SKETCH:

## LEGEND

- ⊕ Section Corner—as designated
- 1/2" rebar found
- 3/4" x 18" rebar set
- x-x- Existing fence



SCALE 1" = 20'

# GRANT COUNTY

## Survey Monument Record

TYPE OF MONUMENT COUNTY ALUMINUM MON.

STATE PLANE COORDINATES: N \_\_\_\_\_  
E \_\_\_\_\_

ELEVATION — M.S.L. DATUM: \_\_\_\_\_

THETA ANGLE: \_\_\_\_\_

FIELD BOOK: \_\_\_\_\_

PAGE \_\_\_\_\_

CORNER NO. 130

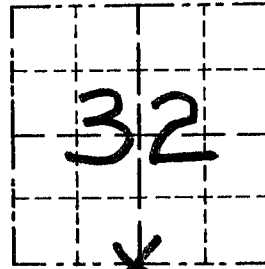
SECTION 32

TOWN 5N

RANGE 2W

### BASIS FOR MONUMENT LOCATION

(Use reverse side if necessary)

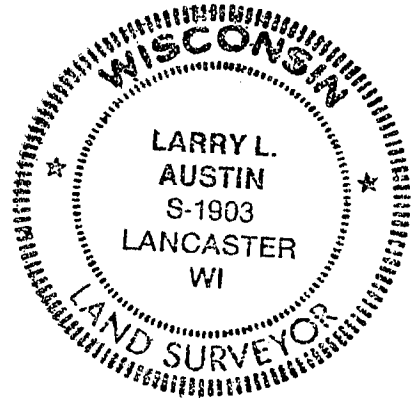


LOCATION  
(Indicated by "X")



CORNER WAS SET AT AN OCCUPIED FENCE CORNER AND VERIFIED BY EDM TRAVERSE OF THE AREA

SEAL:



CERTIFIED CORRECT

*Larry L. Austin*  
Registered Land Surveyor

DATE: 12/5/95

### TIE SKETCH

Show at least three (3) ties and monument

### LEGEND

- ⊕ GRANT COUNTY ALUMINUM MONUMENT
- 1/4" IRON REBAR
- \*\* EXISTING FENCE

