

U.S. PUBLIC LAND SURVEY MONUMENT RECORD - GRANT COUNTY, WI

Section 34, Town 5 North Range 2 West, Town of Liberty (a)

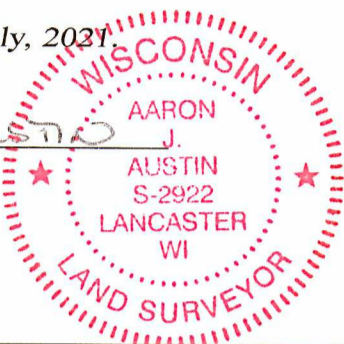
NOTE: This form is intended and designed to fulfill all requirements of the Wisconsin Administrative Code Chapter A-E 7.08, U.S. Public Land Survey Monument Record (3) (a) (b) (c) (d) (e) (f) (g) (h) (i).

CERTIFICATE: (i)

I, Aaron J. Austin, Wisconsin Professional Land Surveyor, do hereby certify that the corner location on this record was determined by me and/or under my direct supervision and that this U.S. Public Land Survey Monument Record is correct and complete to the best of my knowledge and belief.

Dated this 20th day of July, 2021

Aaron J. Austin
Aaron J. Austin, S-2922



⊕ = CORNER LOCATION

Grant County Coordinates:
NAD 83 (2011)
Northing: 529,650.69
Easting: 847,037.00

HISTORY OF CORNER ESTABLISHMENT:

Original corner was set in 1832 by Harvey Parke.
Larry Austin set a Grant County Aluminum Monument and prepared a Survey Monument Record dated 2/16/1995.

DESCRIPTION OF CORNER EVIDENCE FOUND: (b) (f) (g) (h)

I found the Aluminum Monument as set by Larry Austin West of a rock. No Record was found for a Stone being set at this Corner. I accepted Larry's location and set three additional witness corners after I verified the Monument's location with G.P.S. and E.D.M. methods.

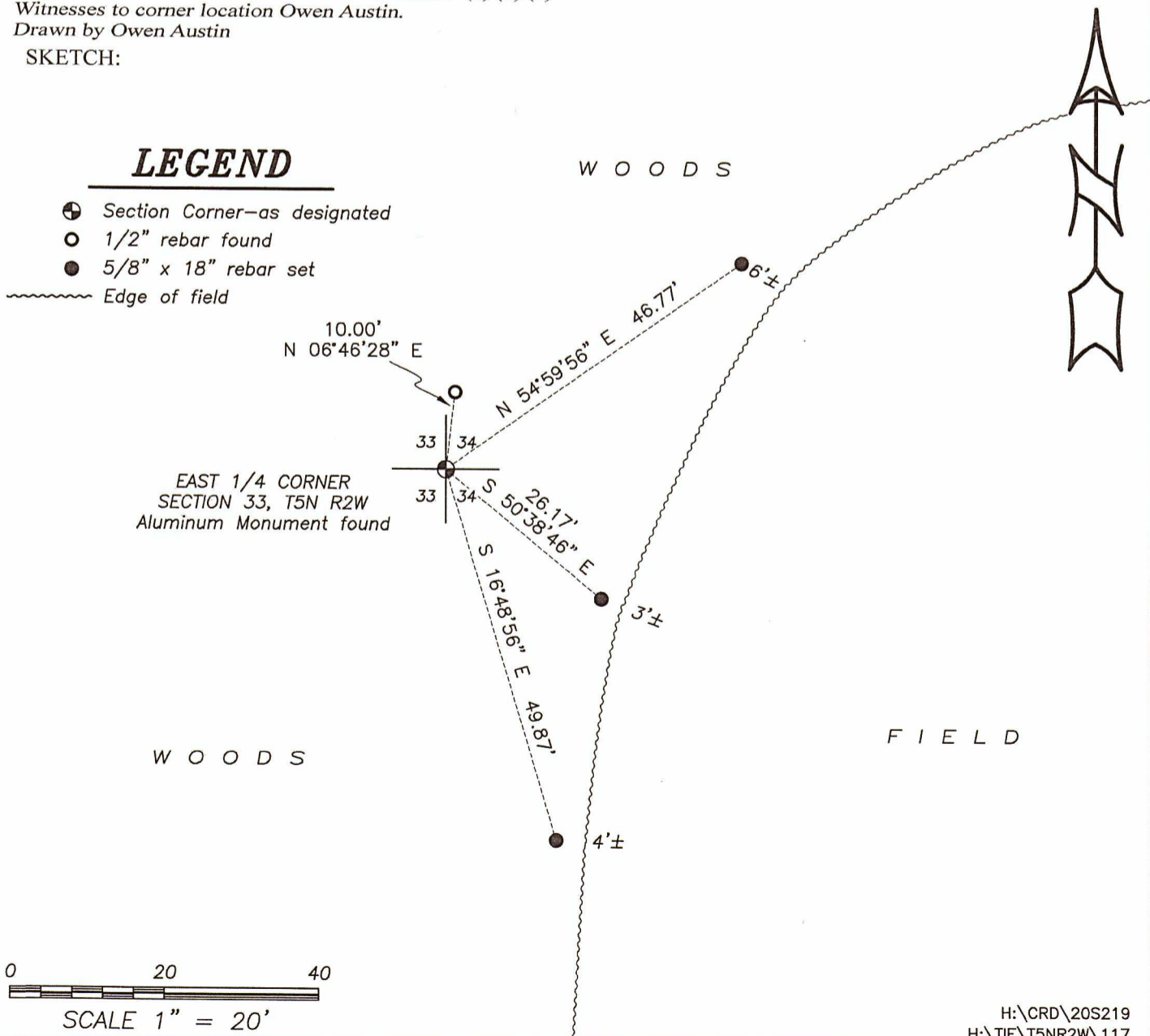
DESCRIPTION OF CORNER AND WITNESS MONUMENTS, references and accessories used to perpetuate the original or re-established location of this corner. (c) (d) (e)

Witnesses to corner location Owen Austin.
Drawn by Owen Austin

SKETCH:

LEGEND

- ⊕ Section Corner—as designated
- 1/2" rebar found
- 5/8" x 18" rebar set
- ~~~~~ Edge of field



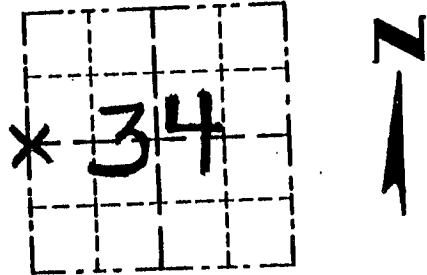
GRANT COUNTY

P. MAR 13 1996

Survey Monument Record

CORNER NO. 117
 SECTION 34
 TOWN 5 N
 RANGE 2 W
W 1/4 COR

TYPE OF MONUMENT COUNTY MONUMENT
 STATE PLANE COORDINATES: N _____
 E _____
 ELEVATION — M.S.L. DATUM: _____
 THETA ANGLE: _____
 FIELD BOOK: _____
 PAGE _____



LOCATION
(Indicated by "X")

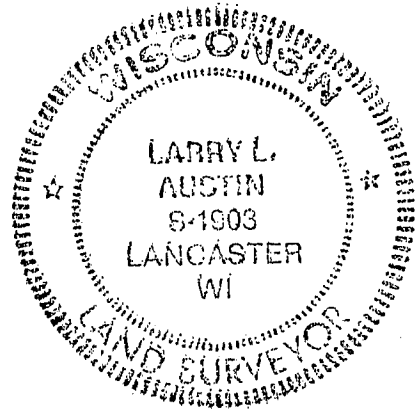
BASIS FOR MONUMENT LOCATION

(Use reverse side if necessary)

Show info such as: History of corner, with reference to Vol. and pg., dates, surveyor; exact description of monument replaced; if location computed, by taped or EDM traverse; landowner, remarks, etc.

SEAL:

ORIG. CORNER SET IN 1832 BY HARVEY PARKE. NO RECORD OF CORNER FOUND SINCE ORIGINAL SURVEYS; I SET THE CORNER AT OCCUPIED LOCATION & VERIFIED BY EDM TRAVERSE OF THE AREA.



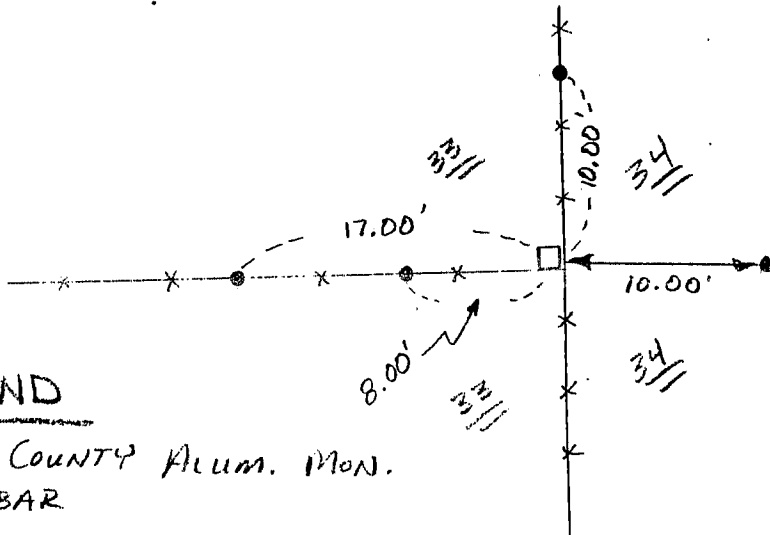
CERTIFIED CORRECT

Larry L. Austin
 Registered Land Surveyor

DATE: 2/16/95

TIE SKETCH

Show at least three (3) ties and monument



NO SCALE

LEGEND

- GRANT COUNTY Alum. Mon.
- 1/2" REBAR

x x EXISTING FENCE