

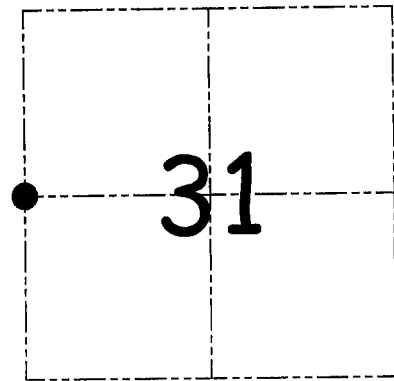
U.S. PUBLIC LAND SURVEY MONUMENT RECORD – GRANT COUNTY, WI
Section 31, Town 5 North Range 2 West, Town of Liberty

CERTIFICATE

I, Larry L. Austin, do hereby certify that the corner location on this record was determined by me and/or under my direct supervision and that this U.S. public land survey monument record is correct and complete to the best of my knowledge and belief.

Dated this 3rd day of July, 2006

Larry L. Austin
 Larry L. Austin S-1903



● = CORNER LOCATION

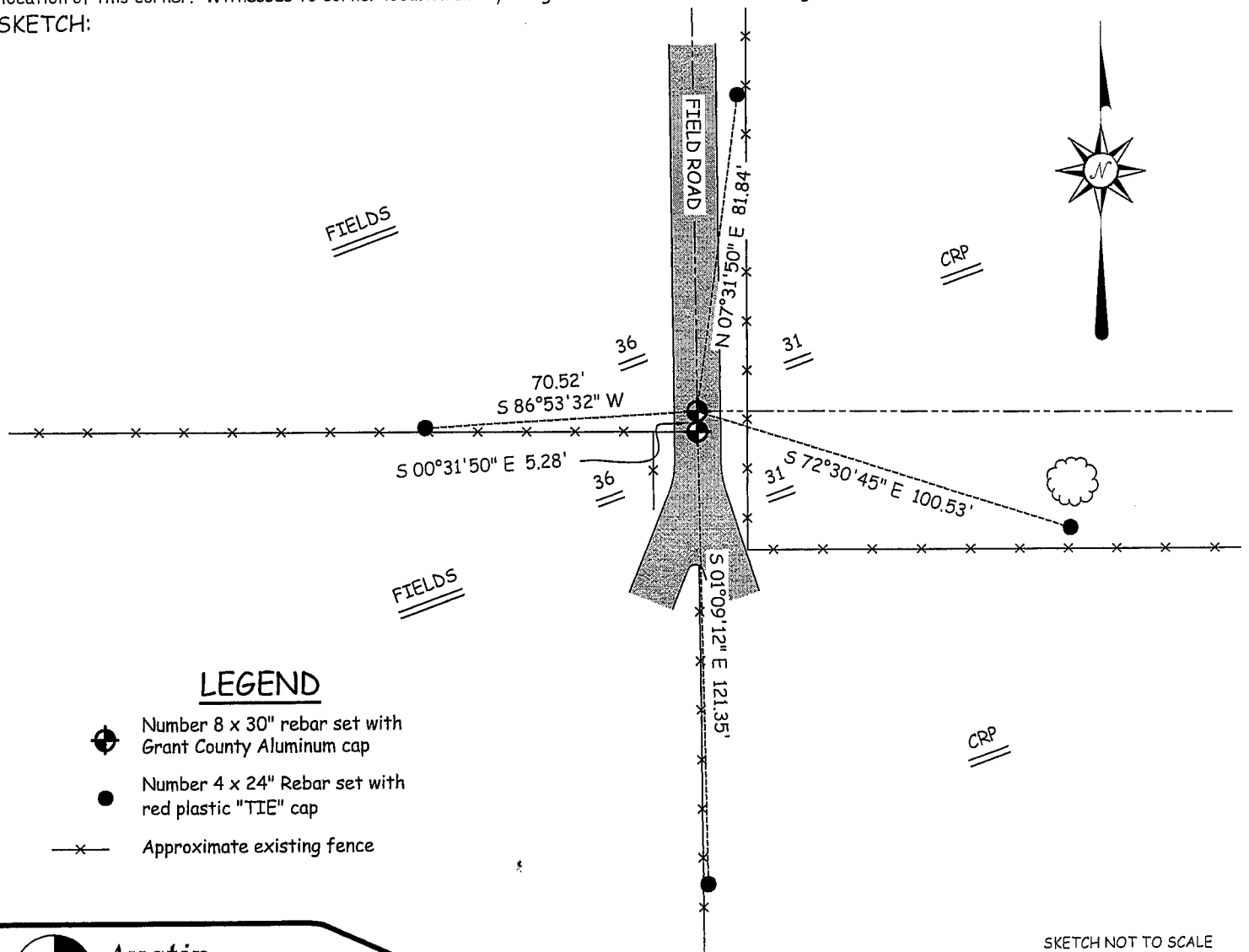
HISTORY OF CORNER ESTABLISHMENT

Corner was never originally set.
 No recent records of the corner were found.

DESCRIPTION OF CORNER EVIDENCE FOUND

I reset the corner at the proportioned offset from the existing West 1/4 of Section 36. Verified this location using EDM & GPS methods.

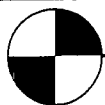
DESCRIPTION OF CORNER AND WITNESS MONUMENTS, references and accessories used to perpetuate the original or re-established location of this corner. Witnesses to corner location Bobby Sedgwick & Shane Austin & Brad Digman
 SKETCH:



LEGEND

- ⊕ Number 8 x 30" rebar set with Grant County Aluminum cap
- Number 4 x 24" Rebar set with red plastic "TIE" cap
- x— Approximate existing fence

SKETCH NOT TO SCALE



Austin
Engineering LLC

4211 HWY 81 E, LANCASTER, WI 53813
 PHONE 608-723-6363 FAX 608-723-6702

JOB NUMBER 06s110
 FIELDBOOK: TDSR, 2601
 G:\T5NR2W\32
 H:\TIE\T5NR2W\114

DRAWN BY: SW AUSTIN
 APPROVED: LL AUSTIN