

GRANT COUNTY CERTIFIED LAND CORNER

CORNER NUMBER 108

CERTIFICATE:

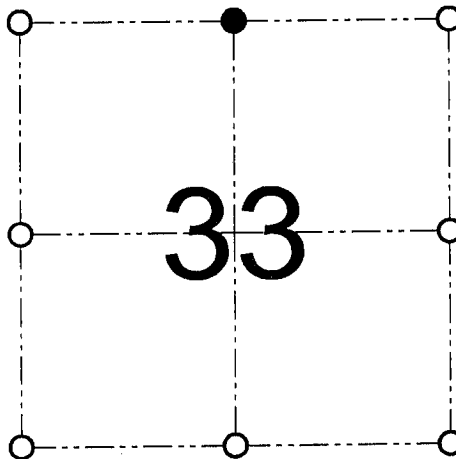
I, Larry L. Austin, do hereby certify that on the 16th day of January, 2001, I found evidence of the North 1/4 corner of Section 33, Town 5 North, Range 2 West, of the 4th Principal Meridian, and I re-established said corner according to the Wisconsin statutes as shown and described hereon.

Dated this 6th day of February, 2001

Larry L. Austin
Larry L. Austin S-1903



SEAL



● = CORNER LOCATION

NORTH 1/4 CORNER OF
SECTION 33, T 5 N R 2 W
TOWN OF LIBERTY

HISTORY OF ORIGINAL CORNER ESTABLISHMENT:

Corner was originally set in 1832 by Harvey Parke. In 1870 Allen tied to the corner with no mention of monument. In 1911 A.W. Appleby tied to the corner also no mention of monument.

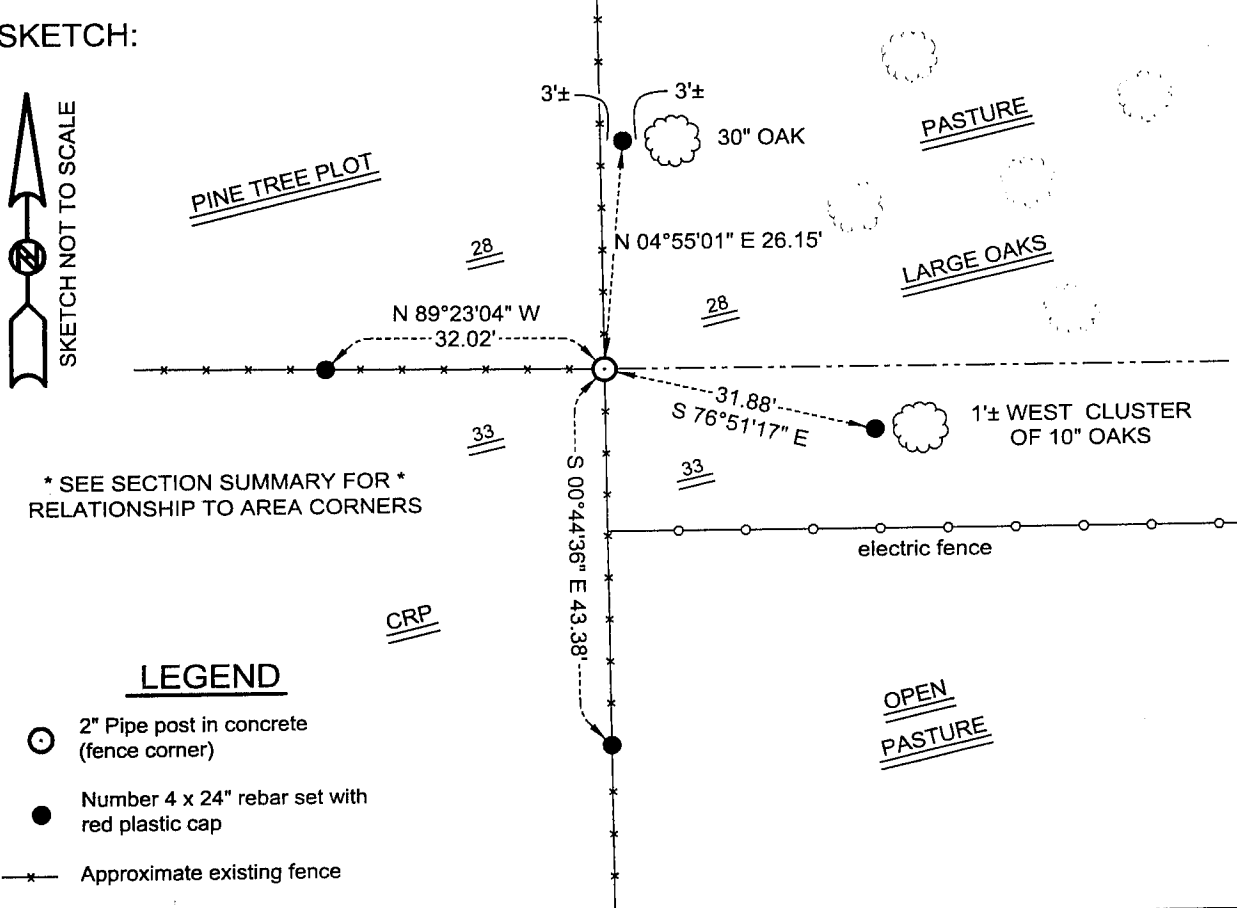
DESCRIPTION OF CORNER EVIDENCE FOUND:

I found an existing 2" pipe post in concrete at a fence corner.
I accepted it's location after an EDM & GPS traverse of the area.

DESCRIPTION OF CORNER AND WITNESS MONUMENTS, references and accessories used to perpetuate the original or re-established location of this corner

WITNESS TO THE CORNER LOCATION: SHANE AUSTIN & TIM FAUVER & BOBBY SEDGWICK

SKETCH:



* SEE SECTION SUMMARY FOR *
RELATIONSHIP TO AREA CORNERS

LEGEND

- 2" Pipe post in concrete (fence corner)
- Number 4 x 24" rebar set with red plastic cap
- x- Approximate existing fence

AUSTIN ENGINEERING, LLC
4211 HWY 81 E, LANCASTER, WI 53813
PHONE 608-723-6363 FAX 608-723-6702

FIELDBOOK: SDR33, 2042
G:\T5NR2W\32
C:\SC14\SWA\TIE\T5NR2W\108

DRAWN BY: SW AUSTIN
APPROVED: LL AUSTIN
CREW: BS - SB - SA - TF