

# GRANT COUNTY CERTIFIED LAND CORNER

CORNER NUMBER 105

**CERTIFICATE:**

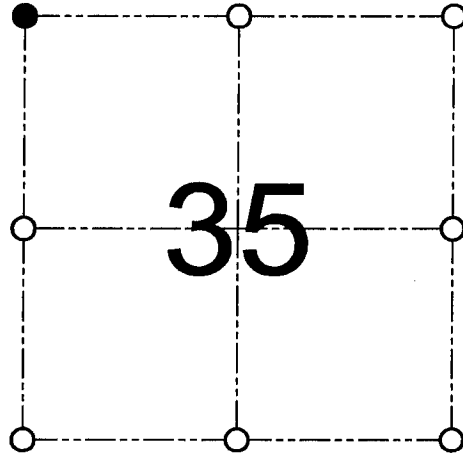
I, Larry L. Austin, do hereby certify that on the 8th day of August, 2000, I found evidence of the Northwest corner of Section 35, Town 5 North, Range 2 West, of the 4th Principal Meridian, and I re-established said corner according to the Wisconsin statutes as shown and described hereon.

Dated this 3rd day of November, 2000

*Larry L. Austin*  
Larry L. Austin S-1903



SEAL



● = CORNER LOCATION

NORTHWEST CORNER OF  
SECTION 35, T 5 N R 2 W  
TOWN OF LIBERTY

**HISTORY OF ORIGINAL CORNER ESTABLISHMENT:**

Corner was originally set in 1832 by Harvey Parke.  
No other record of the corner was found.

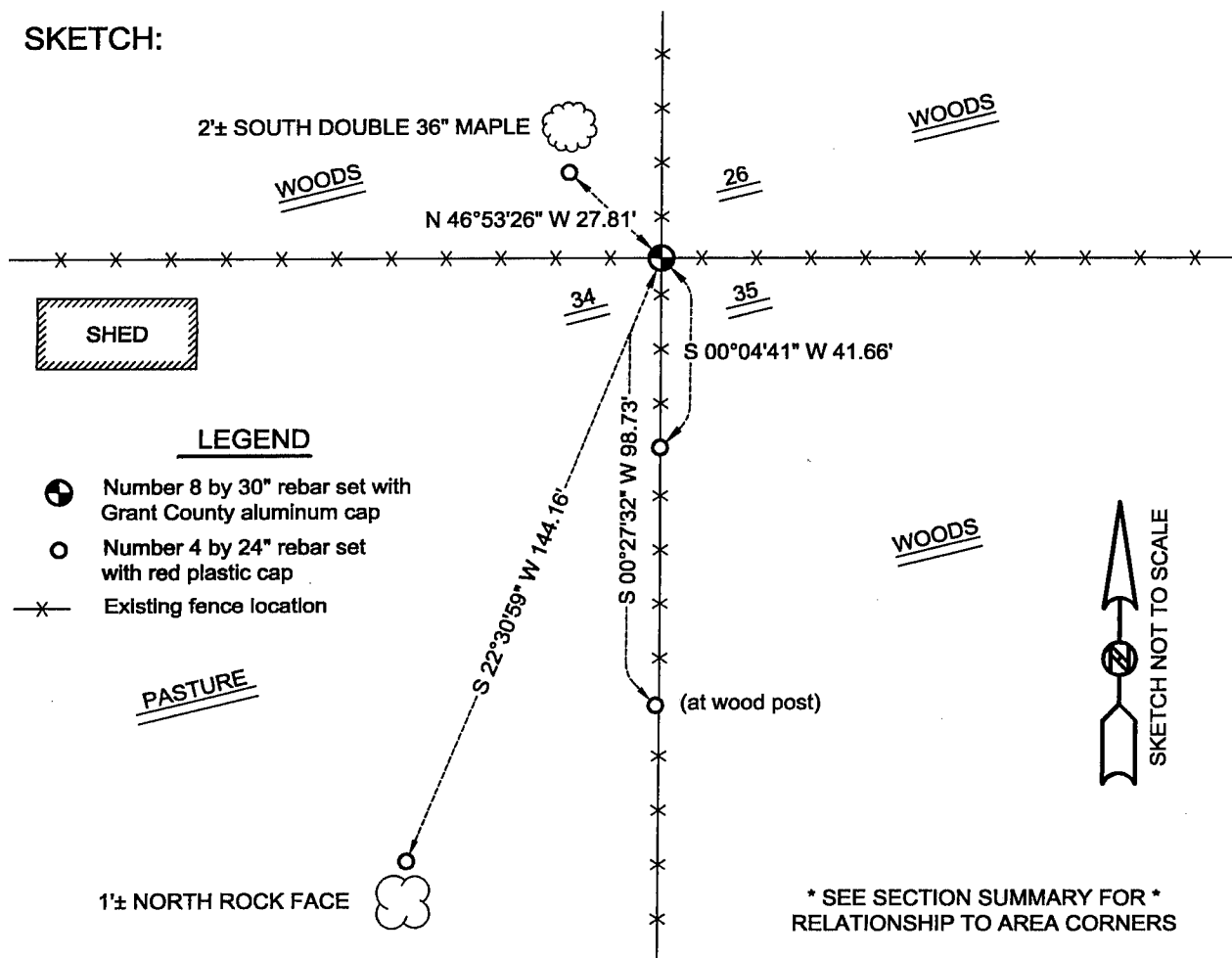
**DESCRIPTION OF CORNER EVIDENCE FOUND:**

I found an occupied location for this corner.  
I accepted it's location after an EDM & GPS traverse of the area.

**DESCRIPTION OF CORNER AND WITNESS MONUMENTS, references and accessories used to perpetuate the original or re-established location of this corner**

WITNESS TO THE CORNER LOCATION: SHELBY BLINDERT & JERRY SPEILMAN

**SKETCH:**



**LEGEND**

- Number 8 by 30" rebar set with Grant County aluminum cap
- Number 4 by 24" rebar set with red plastic cap
- x— Existing fence location

\* SEE SECTION SUMMARY FOR \*  
RELATIONSHIP TO AREA CORNERS