

# GRANT COUNTY U.S. PUBLIC LAND SURVEY MONUMENT RECORD

(A) IDENTIFY THE CORNER AS REFERENCED TO THE U.S. PUBLIC LAND SURVEY SYSTEM

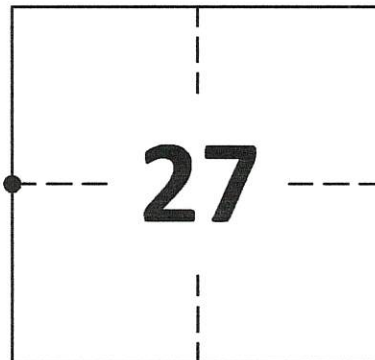
● = CORNER MONUMENT RESTORED

WITNESS TO CORNER LOCATION:  
TRAVIS WARNER

GEOGRAPHIC COORDINATES  
NAD 83 (2011) ADJUSTMENT

LATITUDE: 42°52'44.2744"  
LONGITUDE: -90°36'21.4229"

WISCONSIN STATE PLANE SOUTH ZONE (US SF):  
NORTHING: 320,947.221  
EASTING: 1,806,082.496



SECTION 27, TOWNSHIP 5 NORTH,  
RANGE 2 WEST  
TOWN OF LIBERTY

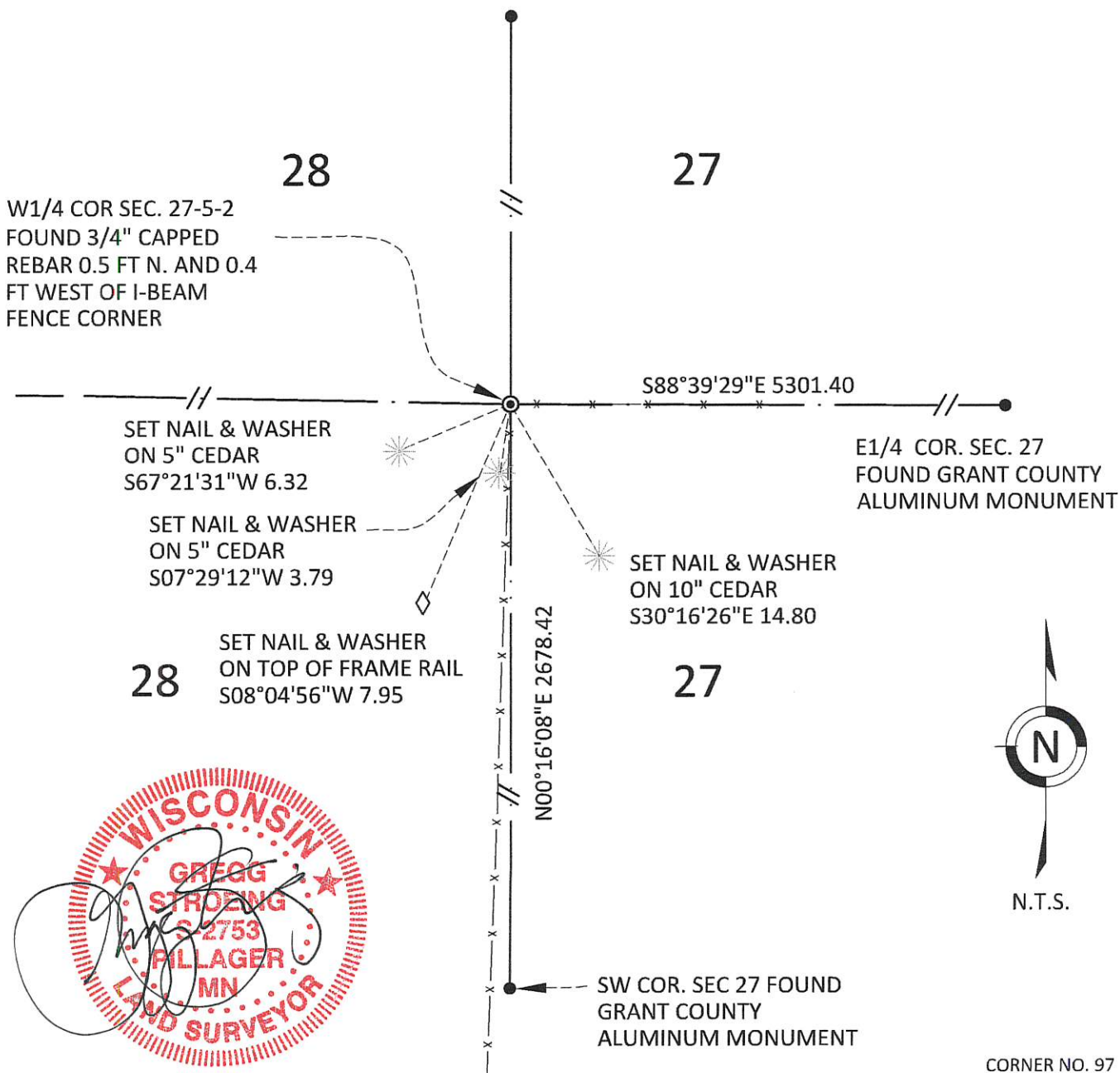
(B) DESCRIBE ANY RECORD EVIDENCE, MONUMENT EVIDENCE, OCCUPATIONAL EVIDENCE, TESTIMONIAL EVIDENCE OR ANY OTHER MATERIAL EVIDENCE YOU CONSIDERED, AND WHETHER THE MONUMENT WAS FOUND OR PLACED.

FOUND 3/4 INCH CAPPED REBAR SET BY LARRY L. AUSTIN AT THE INTERSECTION OF FENCE CORNERS IN 1998.

(C) IN THE PLAN VIEW DRAWING BELOW, PROVIDE REFERENCE TIES TO AT LEAST 4 WITNESS MONUMENTS. WITNESS MONUMENTS SHALL BE MADE OF CONCRETE, NATURAL STONE, IRON, BEARING TREES OR ANY OTHER EQUALLY DURABLE MATERIAL. DEPICT THE RELEVANT MONUMENTS AND REFERENCE TIES WITH SUFFICIENT DETAIL TO ENABLE ACCURATE RELOCATION OF THE CORNER IF THE CORNER MONUMENT IS DISTURBED.

(D) LEGEND

- x — x — x — x — BARBED WIRE FENCE
- CEDAR TREE



**GRANT COUNTY**  
**U.S. PUBLIC LAND SURVEY MONUMENT RECORD**

(E) DESCRIBE ANY MATERIAL DISCREPANCY BETWEEN THE LOCATION OF THE CORNER AS RESTORED OR REESTABLISHED AND THE LOCATION OF THAT CORNER AS PREVIOUSLY RESTORED OR REESTABLISHED BY DISTANCE AND DIRECTION. SHOW THE DISCREPANCY ON THE PLAN VIEW DRAWING UNDER (D), ABOVE. SHOW THE DISTANCES BETWEEN THE CORNER AS PREVIOUSLY RESTORED OR REESTABLISHED AND (1) THE CORNER AS RESTORED OR REESTABLISHED, AND (2) TO AT LEAST 2 OF THE WITNESS MONUMENTS SHOWN ON THE DRAWING IN (D) ABOVE.

N/A

(F) WAS THE CORNER RESTORED THROUGH ACCEPTANCE OF (1) AN OBLITERATED EVIDENCE LOCATION, OR (2) A FOUND PERPETUATED LOCATION?

FOUND AT PERPETUATED LOCATION

(G&H) WAS THE CORNER REESTABLISHED THROUGH LOST CORNER PROPORTIONATE METHODS? IF SO, SHOW THE METHOD, INCLUDING THE DIRECTIONS AND DISTANCES TO OTHER PUBLIC LAND SURVEY CORNERS USED AS EVIDENCE OR USED FOR PROPORTIONING IN DETERMINING THE CORNER LOCATION.

N/A

1. CORNER HISTORY: ORIGINAL POST SET IN 1832 BY HENRY PARKE.
2. IN 1870, BOOK C, PAGES 231 AND 232, JOSEPH ALLEN FOUND THE ORIGINAL CORNER.
3. IN 1998, BOOK 3, PAGE 35, LARRY L. AUSTIN SET A NO. 6 X 24" REBAR WITH PLASTIC SURVEY CAP. I SEARCHED FOR A MONUMENT RECORD AND NOTHING WAS FOUND.
4. IN 2020 GREGG STROEING FOUND A 3/4" IRON ROD SET BY LARRY L. AUSTIN IN 1998 WITH AUSTIN ENGINEERING CAP 0.5 FEET NORTH AND 0.4 FEET WEST OF A STEEL I-BEAM AT THE INTERSECTION OF FENCES. ACCEPTED THE MONUMENT AS THE SECTION CORNER BASED ON THE PERPETUATION LISTED ABOVE. SET NEW TIES AS SHOWN IN PART C.

(I) I, GREGG STROEING P.L.S. - 2753, CERTIFY THAT THE CORNER LOCATION SHOWN ON THIS RECORD WAS DETERMINED BY ME OR UNDER MY DIRECTION AND CONTROL AND THAT THIS U.S. PUBLIC LAND SURVEY MONUMENT RECORD IS CORRECT AND COMPLETE TO THE BEST OF MY KNOWLEDGE AND BELIEF.

SIGNATURE

01/07/2021

DATE



CORNER NO. 97