

U.S. PUBLIC LAND SURVEY MONUMENT RECORD - GRANT COUNTY, WI

Section 21, Town 5 North Range 2 West, Town of Liberty (a)

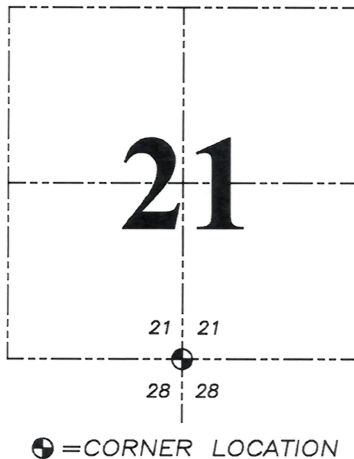
NOTE: This form is intended and designed to fulfill all requirements of the Wisconsin Administrative Code Chapter A-E 7.08, U.S. Public Land Survey Monument Record (3) (a) (b) (c) (d) (e) (f) (g) (h) (i).

CERTIFICATE: (i)

I, Aaron J. Austin, Wisconsin Professional Land Surveyor, do hereby certify that the corner location on this record was determined by me and/or under my direct supervision and that this U.S. Public Land Survey Monument Record is correct and complete to the best of my knowledge and belief.

Dated this 8th day of July, 2025.

Aaron J. Austin
Aaron J. Austin, PLS-2922



Grant County Coordinates:
NAD 83 (2011)
Northing: 537,694.24
Easting: 844,332.56

HISTORY OF CORNER ESTABLISHMENT:

Original corner was set in 1832 by Harvey Parke.
Mathew Janiak found a 2" Iron Pipe and prepared a Survey Monument Record dated 9-28-1992.

DESCRIPTION OF CORNER EVIDENCE FOUND: (b) (f) (g) (h)

I found the 2" Iron Pipe and one witness corner Janiak established. I set four witness and verified the Monument's location with G.P.S. and E.D.M. methods.

DESCRIPTION OF CORNER AND WITNESS MONUMENTS: references and accessories used to perpetuate the original or re-established location of this corner. (c) (d) (e)

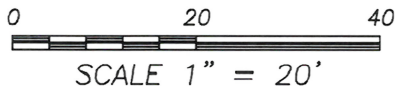
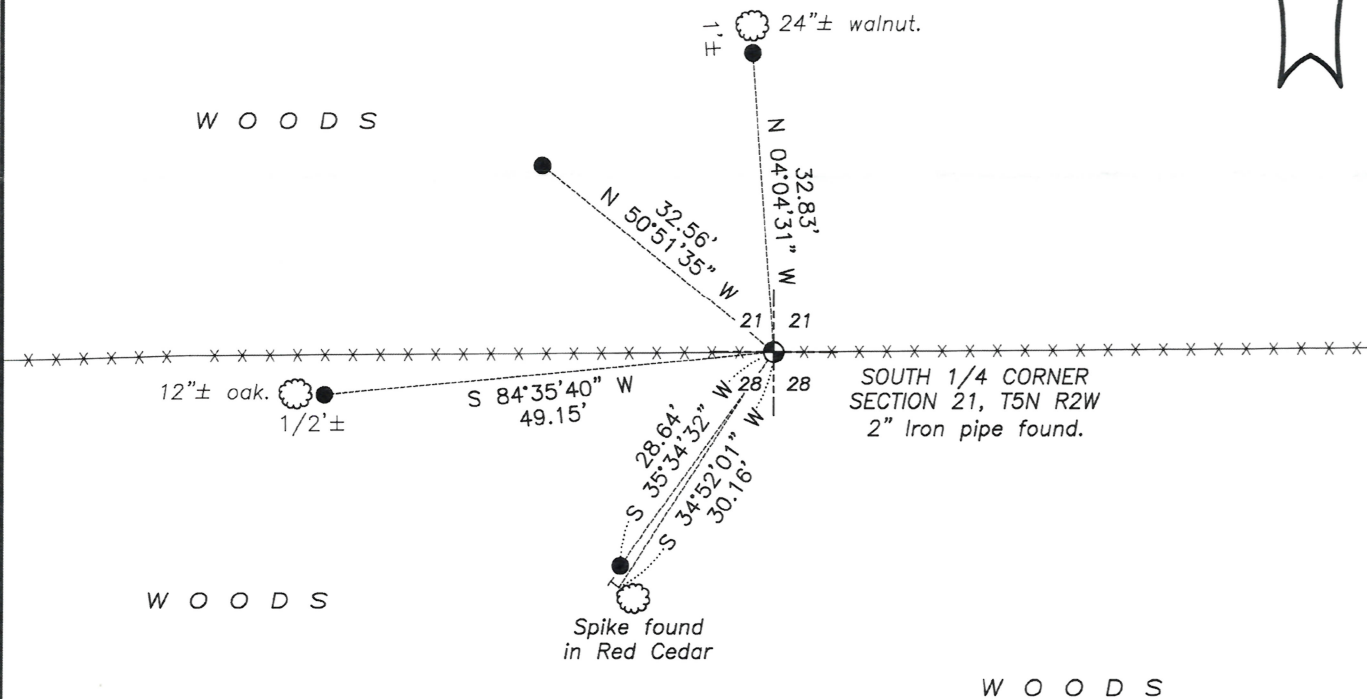
Witnesses to corner location Owen Austin, Tanner Austin.
Drawn by: Owen Austin.

SKETCH:

LEGEND

- ⊕ Section Corner—as designated
- 3/4" x 18" rebar set
- x-x-x- Existing fence
- ⊙ Existing tree

WOODS



SEP 30 1992

GOVERNMENT CORNER RECORD

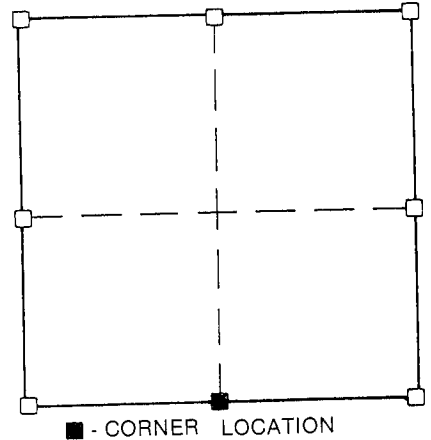
South $\frac{1}{4}$ CORNER, SECTION 21, TOWNSHIP 5 NORTH, RANGE 2 ~~EAST~~ - WEST,
TOWN, ~~OF~~ ~~VILLAGE~~ OF Liberty
TYPE OF MONUMENT: 2" iron pipe ELEVATION - M.S.L. DATUM _____

SECTION 21, T 5 N, R 2 ~~EW~~
TOWN OF Liberty

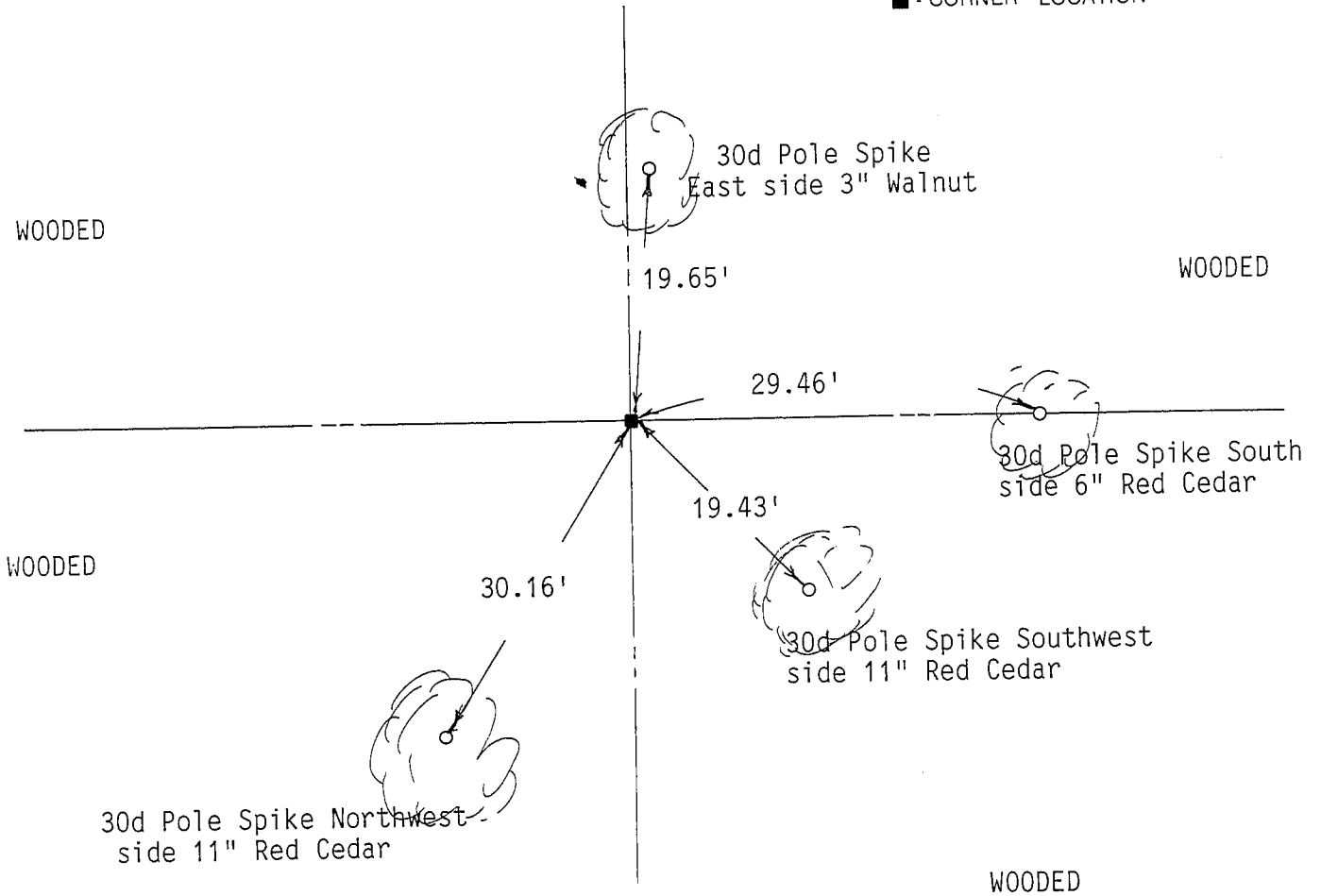
WITNESSES TO CORNER LOCATION

Sean M. Walsh

Matthew J. Janiak



TIE SKETCH
(SHOW ALL HELPFUL FEATURES)



SURVEYOR'S CERTIFICATE

SEAL S. 1454

I, Matthew J. Janiak, DO HEREBY CERTIFY THAT I located a 2" iron pipe
at the above corner. Last used by L. Austin. Location fit well with adjacent
corners to the North and West. I accepted this pipe as correct and referenced
it as shown hereon.



DATED THIS 28th DAY OF September, 19 92

REGISTERED LAND SURVEYOR

88