

52087

U.S. PUBLIC LAND SURVEY MONUMENT RECORD - GRANT COUNTY, WI

Section 22, Town 5 North Range 2 West, Town of Liberty (a)

NOTE: This form is intended and designed to fulfill all requirements of the Wisconsin Administrative Code Chapter A-E 7.08, U.S. Public Land Survey Monument Record (3) (a) (b) (c) (d) (e) (f) (g) (h) (i).

CERTIFICATE: (i)

I, Aaron J. Austin, Wisconsin Professional Land Surveyor, do hereby certify that the corner location on this record was determined by me and/or under my direct supervision and that this U.S. Public Land Survey Monument Record is correct and complete to the best of my knowledge and belief.

Dated this 22nd day of February, 2022.

Aaron J. Austin
Aaron J. Austin, S-2922



21 22
28 27

⊕ = CORNER LOCATION

Grant County Coordinates:
NAD 83 (2011)
Northing: 537,658.32
Easting: 846,990.85

HISTORY OF CORNER ESTABLISHMENT:

Original corner was set in 1832 by Harvey Parke.
Mathew Janiak set 3/4" Rebar and prepared a Survey Monument Record dated 3/8/1988.

DESCRIPTION OF CORNER EVIDENCE FOUND: (b) (f) (g) (h)

I found two existing witness corners Janiak set. I set a 3/4" rebar at the corner from the existing witness corners. I set two additional witness corners after I verified the Monument's location with G.P.S. and E.D.M. methods.

DESCRIPTION OF CORNER AND WITNESS MONUMENTS, references and accessories used to perpetuate the original or re-established location of this corner. (c) (d) (e)

Witnesses to corner location Shane Austin.
Drawn by Owen Austin

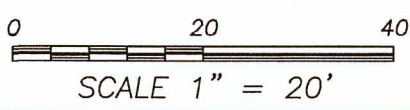
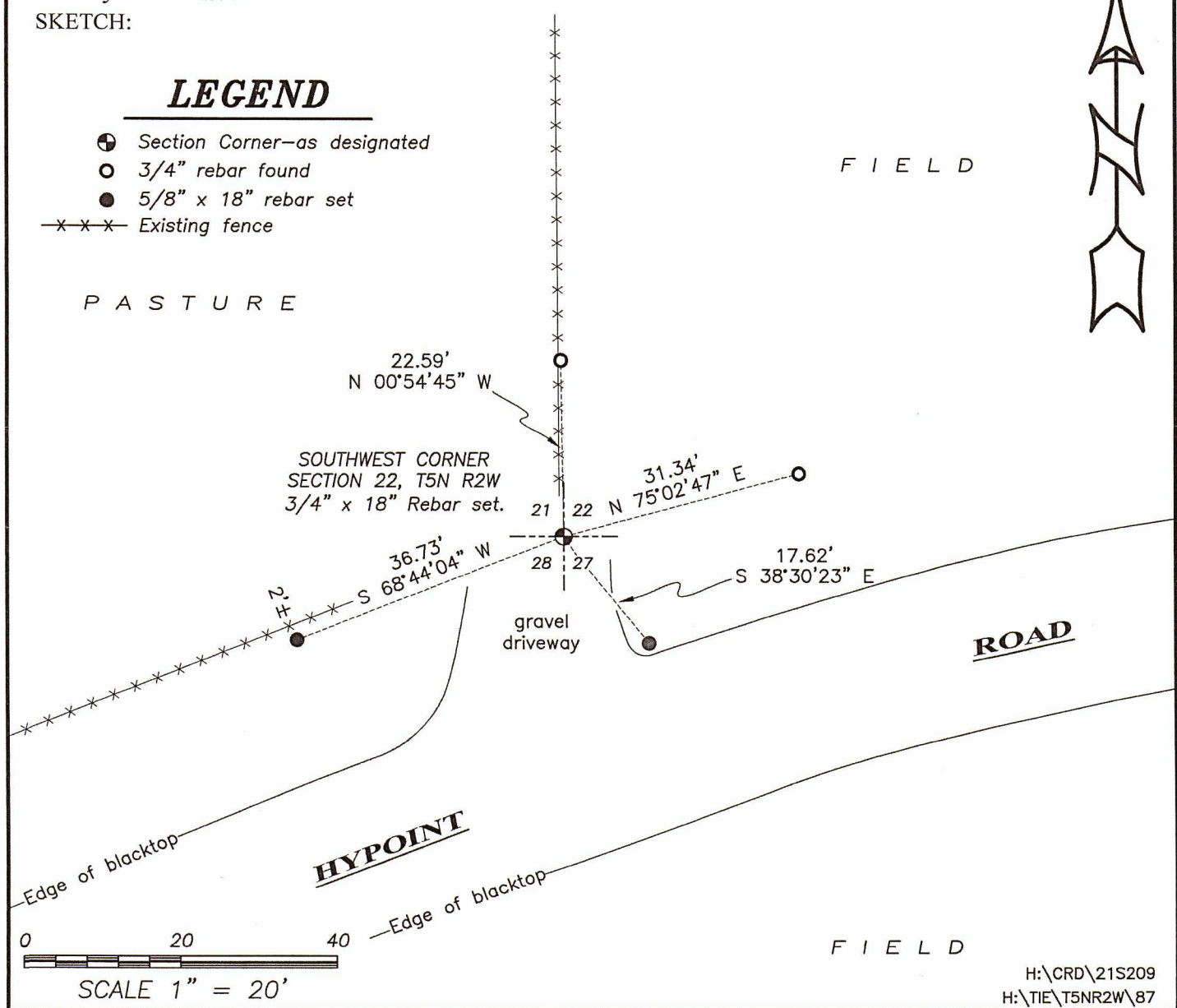
SKETCH:

LEGEND

- ⊕ Section Corner—as designated
- 3/4" rebar found
- 5/8" x 18" rebar set
- x-x-x- Existing fence

P A S T U R E

F I E L D



F I E L D

H:\CRD\21S209
H:\TIE\T5NR2W\87

GRANT COUNTY
RECEIVED

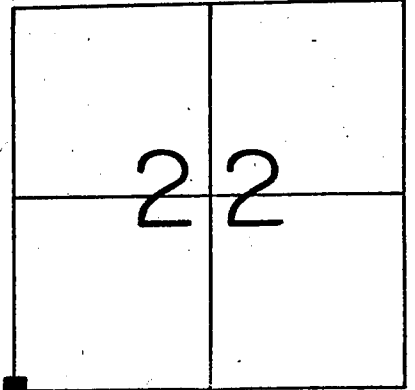
MAR 9 1988

U. S. PUBLIC LAND SURVEY MONUMENT RECORD
GRANT County, Wisconsin.

Basis for monument location.

Section 22, T 5 N, R 2 W

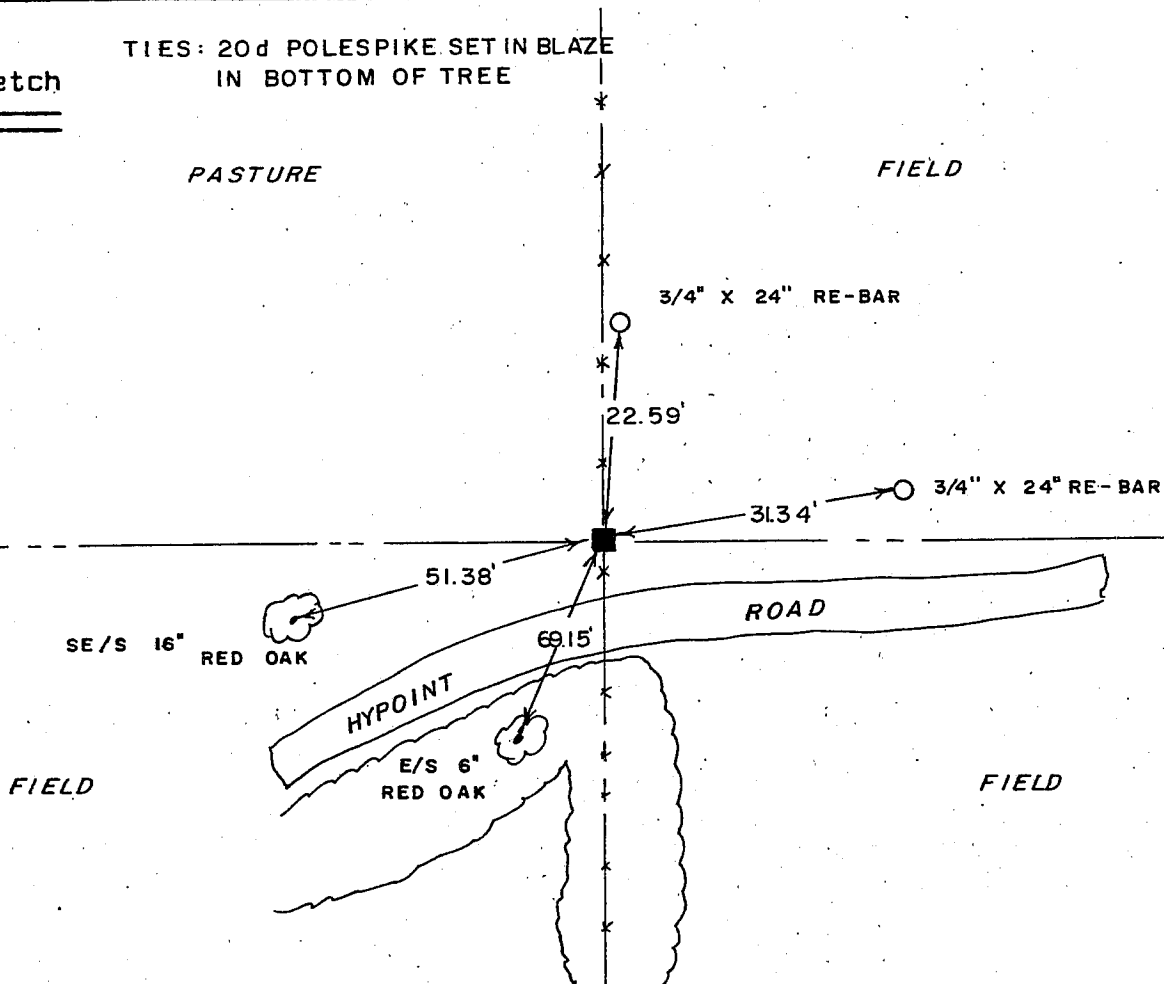
Last reference to the location of the corner was the original Government Survey. No evidence of the corner or its accessories could be located, except for an existing fence corner with a pile of stones at its base. Accepted this location as correct after traversing section and verifying the location. Set an iron bar in the pile of stones to mark location.



Corner Location
(Indicate by - ■)

Tie sketch

TIES: 20d POLESPIKE SET IN BLAZE
IN BOTTOM OF TREE



I, _____ Certify that the corner location shown hereon this record was determined by me or under my direction and control and that this U. S. Public Land Survey Monument Record is correct and complete to the best of my knowledge and belief.

3-8-88
Date

Matthew J. Janiak
Registered Land Surveyor

