

52086

U.S. PUBLIC LAND SURVEY MONUMENT RECORD - GRANT COUNTY, WI

Section 22, Town 5 North Range 2 West, Town of Liberty (a)

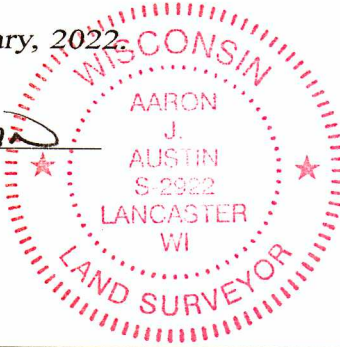
NOTE: This form is intended and designed to fulfill all requirements of the Wisconsin Administrative Code Chapter A-E 7.08, U.S. Public Land Survey Monument Record (3) (a) (b) (c) (d) (e) (f) (g) (h) (i).

CERTIFICATE: (i)

I, Aaron J. Austin, Wisconsin Professional Land Surveyor, do hereby certify that the corner location on this record was determined by me and/or under my direct supervision and that this U.S. Public Land Survey Monument Record is correct and complete to the best of my knowledge and belief.

Dated this 22nd day of February, 2022.

Aaron J. Austin
Aaron J. Austin, S-2922



⊕ = CORNER LOCATION

Grant County Coordinates:
NAD 83 (2011)
Northing: 537,618.66
Easting: 849,653.84

HISTORY OF CORNER ESTABLISHMENT:

Original corner was set in 1832 by Henry Parke.
Matthew Janiak set a 3/4" Rebar and prepared a Survey Monument Record dated 3/8/1988.

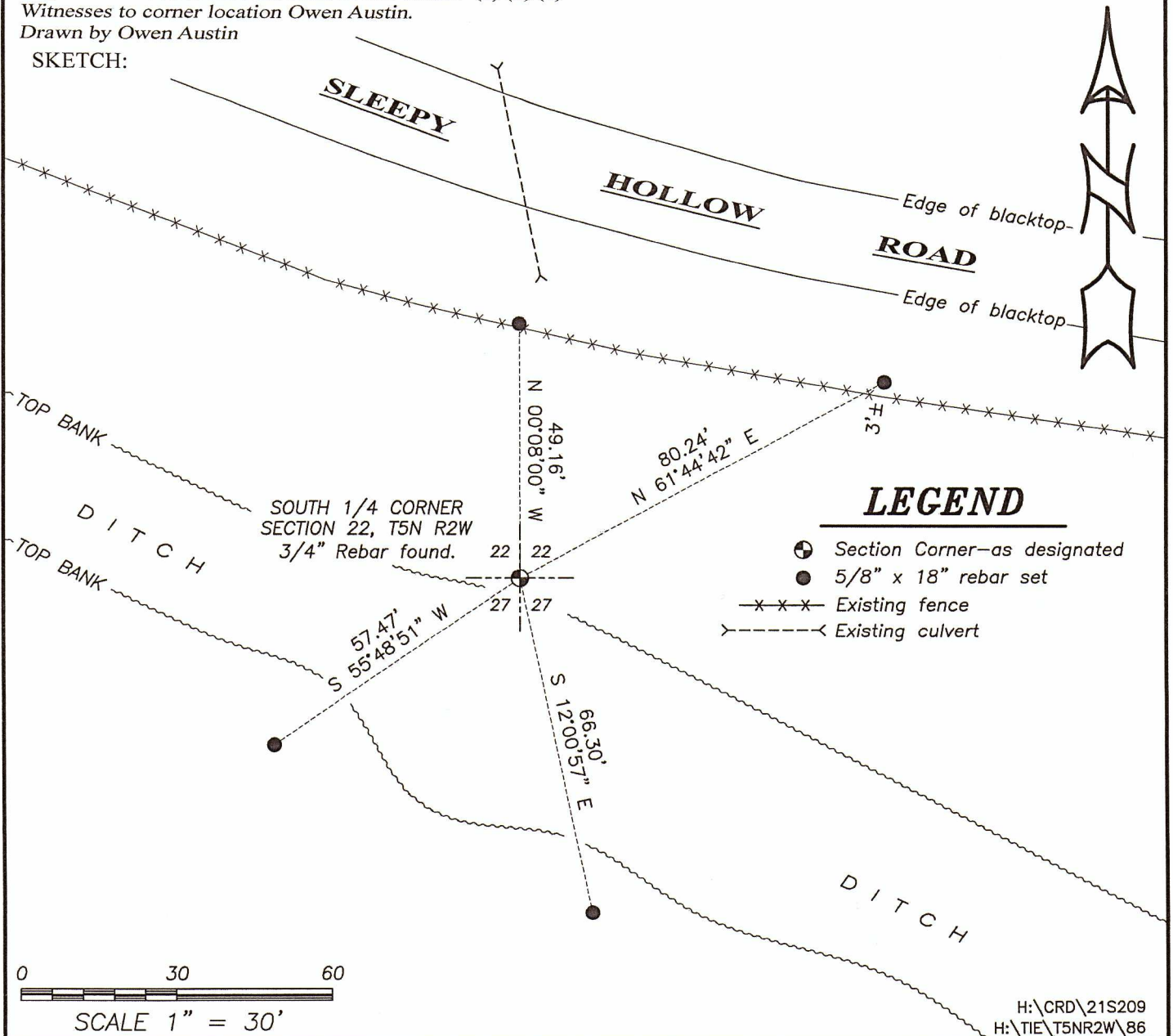
DESCRIPTION OF CORNER EVIDENCE FOUND: (b) (f) (g) (h)

I found the 3/4" Rebar Janiak set. I set four witness corners after I verified the Monument's location with G.P.S. and E.D.M. methods.

DESCRIPTION OF CORNER AND WITNESS MONUMENTS, references and accessories used to perpetuate the original or re-established location of this corner. (c) (d) (e)

Witnesses to corner location Owen Austin.
Drawn by Owen Austin

SKETCH:



GRANT COUNTY
WISCONSIN
RECEIVED

MAR 9 1988

U. S. PUBLIC LAND SURVEY MONUMENT RECORD

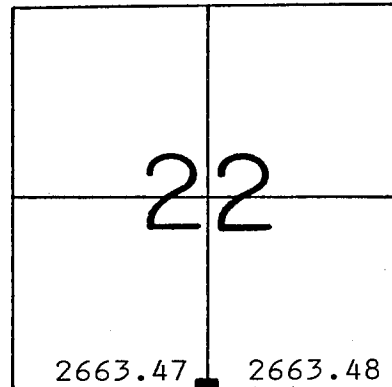
GRANT County, Wisconsin.

Basis for monument location.

Last reference to the corner was the original government survey. No evidence of the corner or its accessories could be located. The area near the corner is a highly eroded section. I established the above corner at a single proportionate distance between the two adjoining corners.



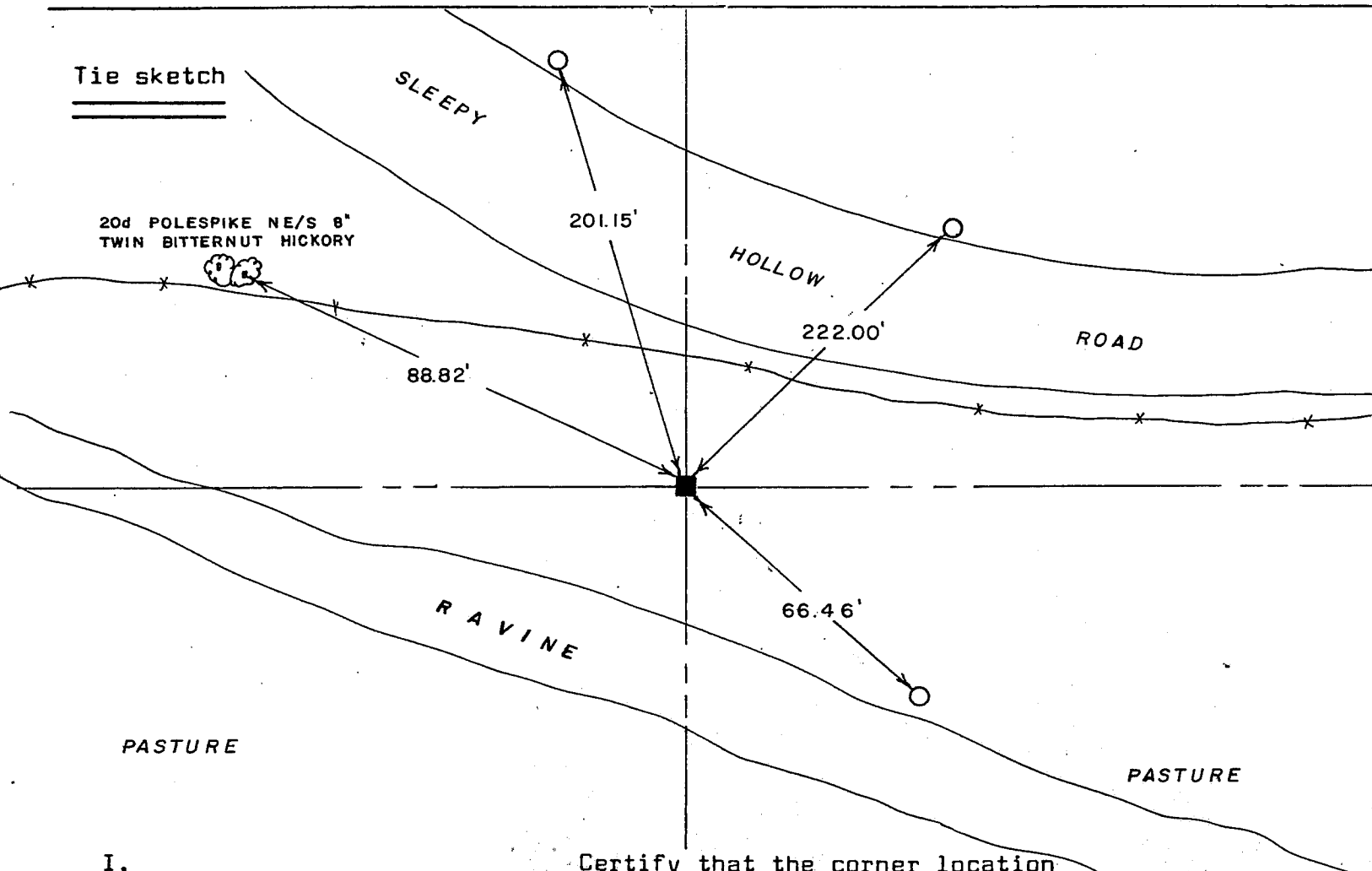
Section 22, T5 N, R 2



Corner Location
(Indicate by - ■)

○ - 3/4" X 24" RE - BAR

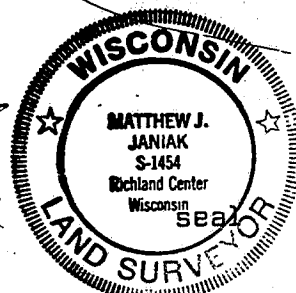
Tie sketch



I, _____ Certify that the corner location shown hereon this record was determined by me or under my direction and control and that this U. S. Public Land Survey Monument Record is correct and complete to the best of my knowledge and belief.

3-8-88
Date

[Signature]
Registered Land Surveyor



[Handwritten mark]