

U.S. PUBLIC LAND SURVEY MONUMENT RECORD - GRANT COUNTY, WI

Section 23, Town 5 North Range 2 West, Town of Liberty (a)

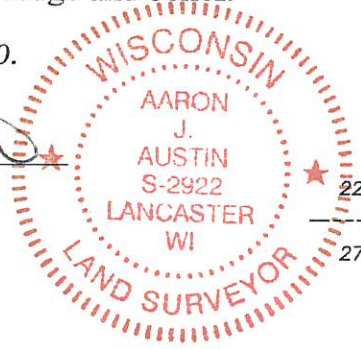
NOTE: This form is intended and designed to fulfill all requirements of the Wisconsin Administrative Code Chapter A-E 7.08, U.S. Public Land Survey Monument Record (3) (a) (b) (c) (d) (e) (f) (g) (h) (i).

CERTIFICATE: (i)

I, Aaron J. Austin, Wisconsin Professional Land Surveyor, do hereby certify that the corner location on this record was determined by me and/or under my direct supervision and that this U.S. Public Land Survey Monument Record is correct and complete to the best of my knowledge and belief.

Dated this 27th day of July, 2020.

Aaron J. Austin
 Aaron J. Austin, S-2922



⊕ = CORNER LOCATION

Grant County Coordinates:
 NAD 83 (2011)
 Northing: 537,579.49
 Easting: 852,317.01

HISTORY OF CORNER ESTABLISHMENT:

Original corner was set in 1832 by Henry Parke. Mathew Janiak found a Stone and chiseled a cross on the top of it. He prepared a Survey Monument Record dated 3/8/1988.

DESCRIPTION OF CORNER EVIDENCE FOUND: (b) (f) (g) (h)

I found a 3/8" spike in a tree root in the location established by Janiak. I found three witness corners from Janiak's Survey Monument Record and set two additional witness corners after I verified the Monument's location with G.P.S. and E.D.M. methods.

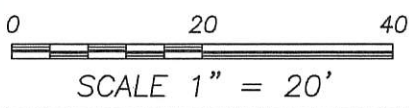
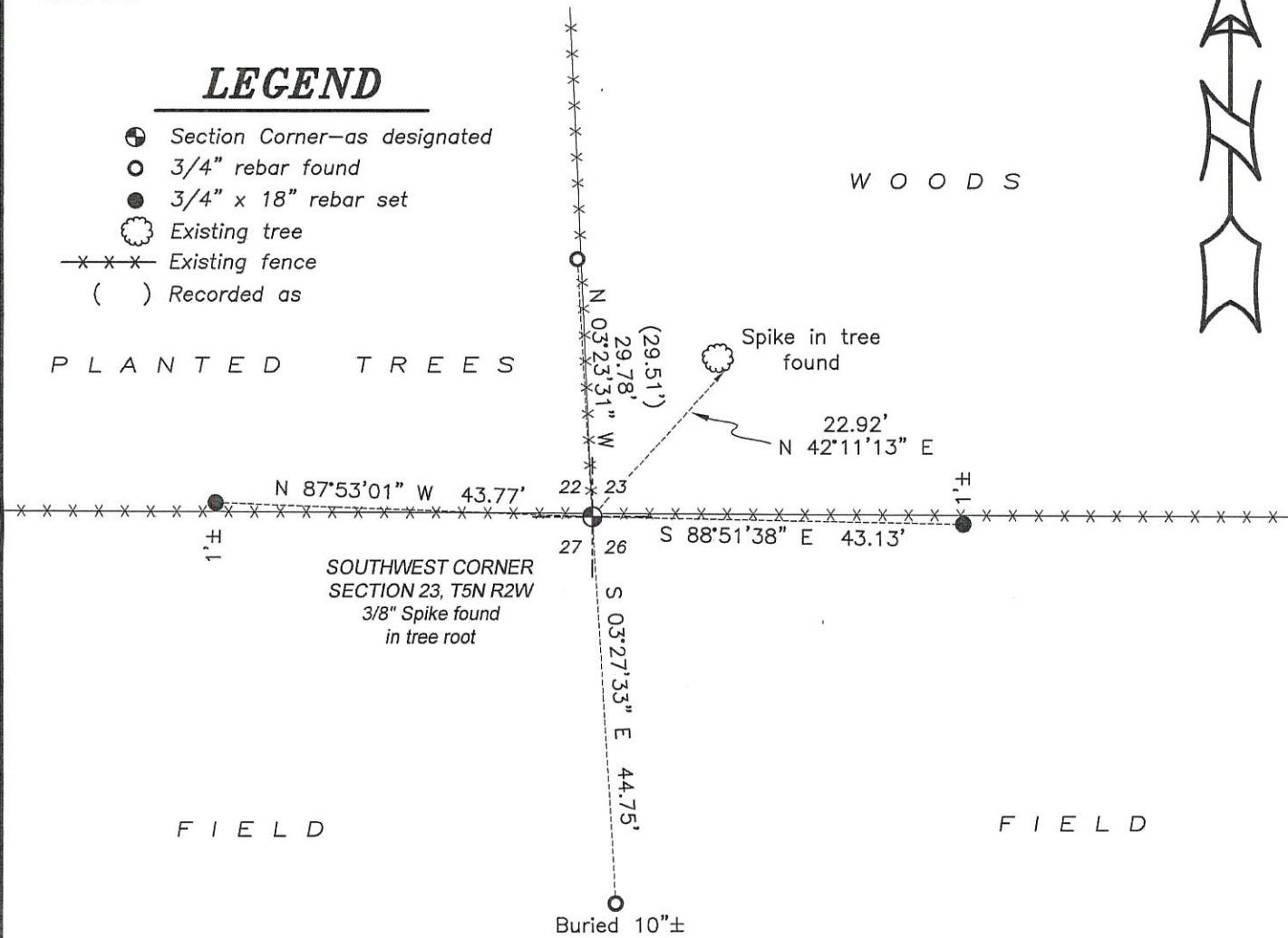
DESCRIPTION OF CORNER AND WITNESS MONUMENTS, references and accessories used to perpetuate the original or re-established location of this corner. (c) (d) (e)

Witnesses to corner location Shane Austin, Owen Austin.
 Drawn by Owen Austin

SKETCH:

LEGEND

- ⊕ Section Corner—as designated
- 3/4" rebar found
- 3/4" x 18" rebar set
- ⊗ Existing tree
- x-x-x- Existing fence
- () Recorded as



GRANT COUNTY U.S. PUBLIC LAND SURVEY MONUMENT RECORD

(A) IDENTIFY THE CORNER AS REFERENCED TO THE U.S. PUBLIC LAND SURVEY SYSTEM

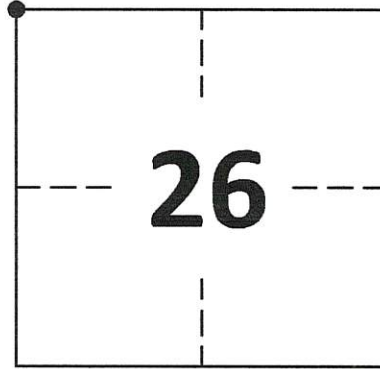
● = CORNER MONUMENT RESTORED

WITNESSES TO CORNER LOCATION:
TRAVIS WARNER

GEOGRAPHIC COORDINATES
NAD 83 (2011) ADJUSTMENT

LATITUDE: 42°53'09.6525"
LONGITUDE: -90°35'10.1415"

WISCONSIN STATE PLANE SOUTH ZONE (US SF):
NORTHING: 323,478.462
EASTING: 1,811,407.714



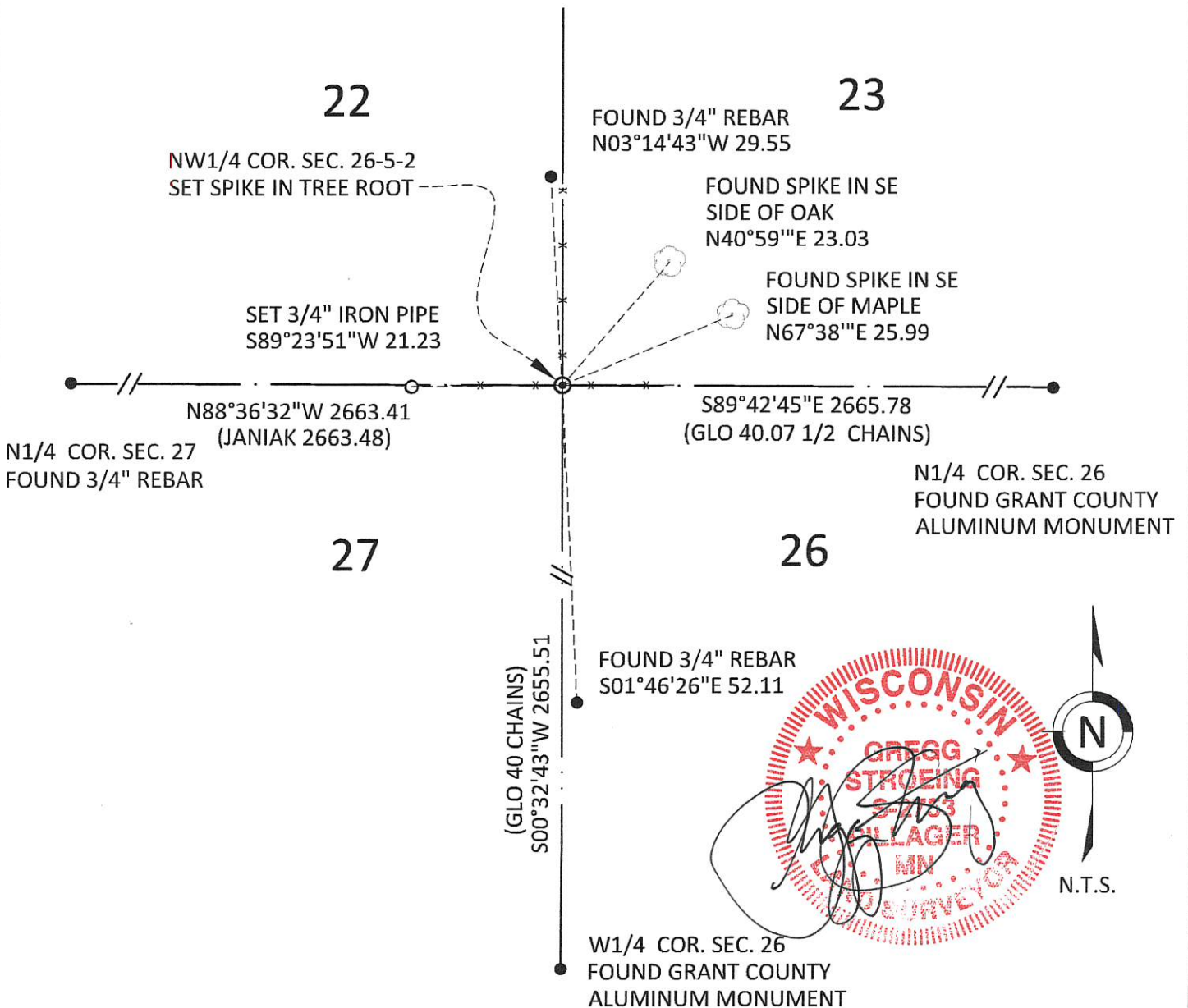
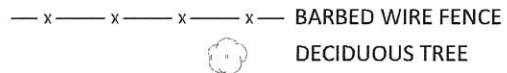
SECTION 26
TOWNSHIP 5 NORTH, RANGE 2 WEST
TOWN OF LIBERTY

(B) DESCRIBE ANY RECORD EVIDENCE, MONUMENT EVIDENCE, OCCUPATIONAL EVIDENCE, TESTIMONIAL EVIDENCE OR ANY OTHER MATERIAL EVIDENCE YOU CONSIDERED, AND WHETHER THE MONUMENT WAS FOUND OR PLACED.

SEARCHED FOR STONE AT INTERSECTION OF FENCE LINES FOUND BY MATHEW J. JANIAK IN 1988 TO NO AVAIL. FOUND ACCESSORY TIES, (3/4" REBAR TO THE SOUTH, 3/4" REBAR TO THE NORTH, SPIKE IN RED OAK AND SPIKE IN MAPLE TO THE NE), SET BY MATHEW J. JANIAK. INTERSECTED TIES AND SET A SPIKE IN THE ROOT OF A TREE FOR THE SECTION CORNER.

(C) IN THE PLAN VIEW DRAWING BELOW, PROVIDE REFERENCE TIES TO AT LEAST 4 WITNESS MONUMENTS. WITNESS MONUMENTS SHALL BE MADE OF CONCRETE, NATURAL STONE, IRON, BEARING TREES OR ANY OTHER EQUALLY DURABLE MATERIAL. DEPICT THE RELEVANT MONUMENTS AND REFERENCE TIES WITH SUFFICIENT DETAIL TO ENABLE ACCURATE RELOCATION OF THE CORNER IF THE CORNER MONUMENT IS DISTURBED.

(D) LEGEND



GRANT COUNTY
U.S. PUBLIC LAND SURVEY MONUMENT RECORD

(E) DESCRIBE ANY MATERIAL DISCREPANCY BETWEEN THE LOCATION OF THE CORNER AS RESTORED OR REESTABLISHED AND THE LOCATION OF THAT CORNER AS PREVIOUSLY RESTORED OR REESTABLISHED BY DISTANCE AND DIRECTION. SHOW THE DISCREPANCY ON THE PLAN VIEW DRAWING UNDER (D), ABOVE. SHOW THE DISTANCES BETWEEN THE CORNER AS PREVIOUSLY RESTORED OR REESTABLISHED AND (1) THE CORNER AS RESTORED OR REESTABLISHED, AND (2) TO AT LEAST 2 OF THE WITNESS MONUMENTS SHOWN ON THE DRAWING IN (D) ABOVE.

N/A

(F) WAS THE CORNER RESTORED THROUGH ACCEPTANCE OF (1) AN OBLITERATED EVIDENCE LOCATION, OR (2) A FOUND PERPETUATED LOCATION?

FOUND AT PERPETUATED LOCATION

(G&H) WAS THE CORNER REESTABLISHED THROUGH LOST CORNER PROPORTIONATE METHODS? IF SO, SHOW THE METHOD, INCLUDING THE DIRECTIONS AND DISTANCES TO OTHER PUBLIC LAND SURVEY CORNERS USED AS EVIDENCE OR USED FOR PROPORTIONING IN DETERMINING THE CORNER LOCATION.

N/A

1. CORNER HISTORY: ORIGINAL POST SET IN 1832 BY HENRY PARKE.
2. IN 1870, BOOK C, PAGE 231, JOSEPH ALLEN, FOUND THE ORIGINAL CORNER.
3. IN 1875, BOOK B, PAGE 535, JOEL BARBER, FOUND THE ORIGINAL CORNER.
4. IN 1988, BOOK J, PAGE 128, MATHEW J. JANIAC, ON PLATS OF SURVEY, FINDS A STONE AND SCRIBES AN "X" IN IT AND RECORDS A US PUBLIC LAND SURVEY MONUMENT RECORD.
5. IN 2011, BOOK 29, PAGE 77 AND BOOK 30, PAGE 17, AARON J. AUSTIN, ON PLATS OF SURVEY FOUND A STONE.
6. IN 2012, BOOK 33, PAGE 10 AND BOOK 30, PAGE 33, AARON J. AUSTIN, ON PLATS OF SURVEY FOUND A STONE.
7. IN 2020 GREGG STROEING SEARCHED FOR THE STONE ORIGINALLY FOUND BY JANIAC IN 1988 AT THE INTERSECTION OF FENCES AND DID NOT FIND IT. TIES WERE FOUND OVERGROWN IN TWO BEARING TREES SET BY JANIAC ALONG WITH A 3/4" REBAR NORTH AND SOUTH AND INTERSECTED AT A TREE ROOT AT THE INTERSECTION OF FENCES. SET A SPIKE IN THE TREE ROOT. THE DISTANCE TO THE N1/4 CORNER OF SECTION 27 FITS WELL WITH THE JANIAC PLAT OF SURVEY PERFORMED IN 1988. AND ACCEPTED THIS POSITION AS THE PERPETUATED MONUMENT FOUND BY BRUCE D. BOWDEN, IN 1995. UPDATED AND SET NEW TIES AS SHOWN IN PART C.

(I) I, GREGG STROEING P.L.S. - 2753, CERTIFY THAT THE CORNER LOCATION SHOWN ON THIS RECORD WAS DETERMINED BY ME OR UNDER MY DIRECTION AND CONTROL AND THAT THIS U.S. PUBLIC LAND SURVEY MONUMENT RECORD IS CORRECT AND COMPLETE TO THE BEST OF MY KNOWLEDGE AND BELIEF.

SIGNATURE

12/15/2020

DATE



CORNER NO. 85

RECEIVED

MAR 9 1988

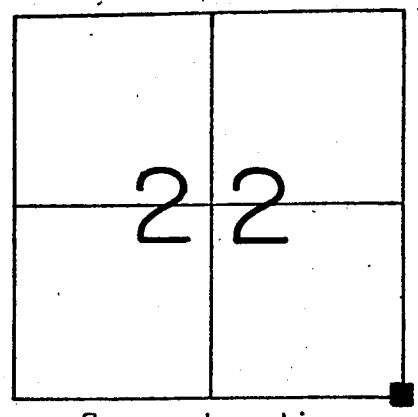
U. S. PUBLIC LAND SURVEY MONUMENT RECORD

GRANT County, Wisconsin.

Basis for monument location.

Last reference to the corner was the original Government survey. A stone was located at an existing fence corner standing on end. Accepted this stone as the correct corner and referenced as shown hereon. Placed a chiseled cross on the top edge of the stone.

Section 22, T 5 N, R 2



Corner Location (Indicate by - ■)

Tie sketch

TIES: 20d POLESPIKES SET IN BLAZE AT BOTTOM OF TREES

FIELD

WOODED

N/S RED OAK SAPLING

3/4" X 24" RE-BAR

SE/S 12" RED OAK

SE/S 13" MAPLE

29.51'

22.92'

26.13'

18.56'

44.75'

FIELD

FIELD

3/4" X 24" RE-BAR BURIED 10"

I, _____ Certify that the corner location shown hereon this record was determined by me or under my direction and control and that this U. S. Public Land Survey Monument Record is correct and complete to the best of my knowledge and belief.

3-8-88
Date

Matthew J. Janiak
Registered Land Surveyor



188