

**GRANT COUNTY
U.S. PUBLIC LAND SURVEY MONUMENT RECORD**

(E) DESCRIBE ANY MATERIAL DISCREPANCY BETWEEN THE LOCATION OF THE CORNER AS RESTORED OR REESTABLISHED AND THE LOCATION OF THAT CORNER AS PREVIOUSLY RESTORED OR REESTABLISHED BY DISTANCE AND DIRECTION. SHOW THE DISCREPANCY ON THE PLAN VIEW DRAWING UNDER (D), ABOVE. SHOW THE DISTANCES BETWEEN THE CORNER AS PREVIOUSLY RESTORED OR REESTABLISHED AND (1) THE CORNER AS RESTORED OR REESTABLISHED, AND (2) TO AT LEAST 2 OF THE WITNESS MONUMENTS SHOWN ON THE DRAWING IN (D) ABOVE.

N/A

(F) WAS THE CORNER RESTORED THROUGH ACCEPTANCE OF (1) AN OBLITERATED EVIDENCE LOCATION, OR (2) A FOUND PERPETUATED LOCATION?

FOUND AT PERPETUATED LOCATION

(G&H) WAS THE CORNER REESTABLISHED THROUGH LOST CORNER PROPORTIONATE METHODS? IF SO, SHOW THE METHOD, INCLUDING THE DIRECTIONS AND DISTANCES TO OTHER PUBLIC LAND SURVEY CORNERS USED AS EVIDENCE OR USED FOR PROPORTIONING IN DETERMINING THE CORNER LOCATION.

N/A

1. CORNER HISTORY: ORIGINAL CORNER SET IN 1832 BY HARVEY PARKE.
2. IN 1875, BOOK B, PAGE 535 AND 554, JOEL BARBER FOUND THE ORIGINAL CORNER.
3. IN 1980, BRUCE BOWDEN SET A 1 1/4" ROUND SOLID BAR
4. IN 1984, BRUCE BOWDEN ON C.S.M. NO. 231 SHOWS A 1 1/4" BAR
5. IN 1987, BOOK J, PAGE 129, LARRY L. AUSTIN FOUND A 1 1/4" ROUND SOLID ROD ON A MORTGAGE INSPECTION SURVEY.
6. IN 1997, BOOK Z, PAGE 68, LARRY L. AUSTIN FOUND A 1 1/4" IRON BAR ON A PLAT OF SURVEY AND RECORDED A SURVEY MONUMENT RECORD.
7. IN 2011, BOOK 29, PAGE 77 AARON J. AUSTIN FOUND THE 1 1/4" REBAR DISTURBED AND SET A 1" REBAR WITH GRANT COUNTY ALUMINUM CAP AND RECORDED A U.S. PUBLIC LAND SURVEY MONUMENT RECORD.
8. IN 2012, BOOK 30, PAGE 33, AARON J. AUSTIN LOCATED A GRANT COUNTY MONUMENT ON A PLAT OF SURVEY.
9. IN 2020 GREGG STROEING ACCEPTED THIS POSITION OF THE PERPETUATED GRANT COUNTY MONUMENT SET BY AARON J. AUSTIN IN 2011. UPDATED AND SET NEW TIES AS SHOWN IN PART C

(I) I, GREGG STROEING P.L.S. - 2753, CERTIFY THAT THE CORNER LOCATION SHOWN ON THIS RECORD WAS DETERMINED BY ME OR UNDER MY DIRECTION AND CONTROL AND THAT THIS U.S. PUBLIC LAND SURVEY MONUMENT RECORD IS CORRECT AND COMPLETE TO THE BEST OF MY KNOWLEDGE AND BELIEF.

SIGNATURE

12/09/2020

DATE



CORNER NO. 84

U.S. PUBLIC LAND SURVEY MONUMENT RECORD - GRANT COUNTY, WI

Section 26, Town 5 North Range 2 West, Town of Liberty

CERTIFICATE:

I, Aaron J. Austin, do hereby certify that the corner location on this record was determined by me and/or under my direct supervision and that this U.S. Public Land Survey Monument Record is correct and complete to the best of my knowledge and belief.

Dated this 16th day of June, 2011.

Aaron J. Austin
 Aaron J. Austin, S-2922



● = CORNER LOCATION

HISTORY OF CORNER ESTABLISHMENT:

Corner was set in 1832 by Hervey Parke. In 1980 Bruce Bowden set a 1 1/4" iron bar. In 1997 Larry Austin found and accepted the corner location and tied out the corner.

DESCRIPTION OF CORNER EVIDENCE FOUND:

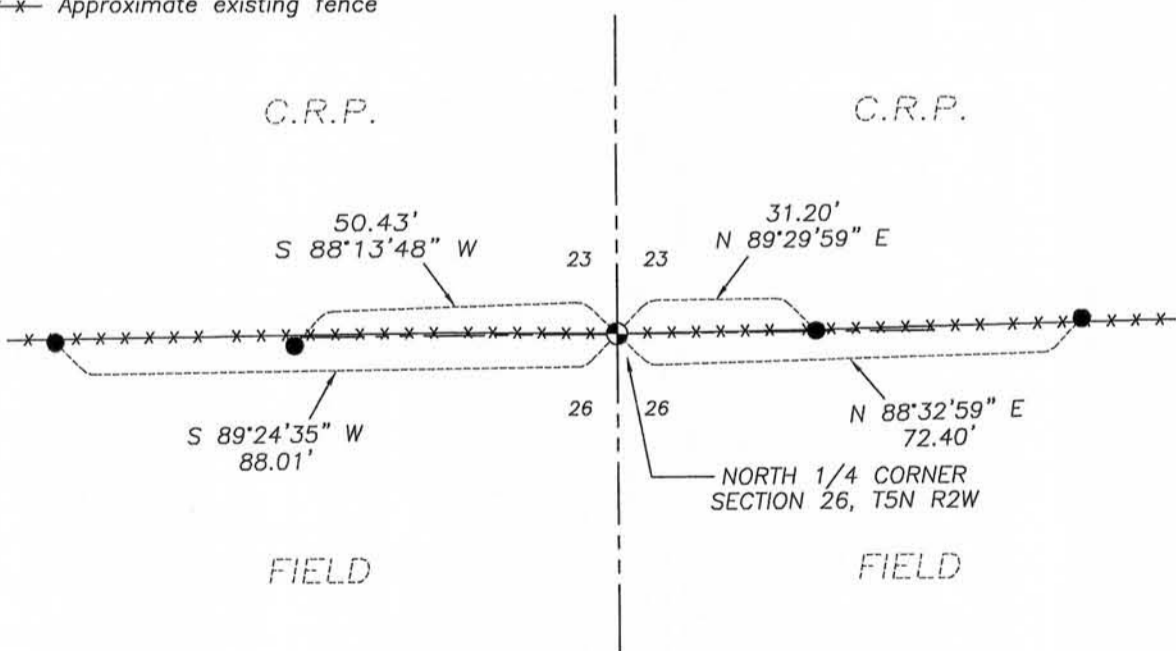
The 1 1/4" rebar was found and disturbed. The ties set by Larry Austin were found to be disturbed. I set a No. 8 rebar with Grant County Aluminum Cap and new ties based upon ties to adjoining corners and the Larry Austin Survey. EDM Traverse and GPS Observation were used.

DESCRIPTION OF CORNER AND WITNESS MONUMENTS, references and accessories used to perpetuate the original or re-established location of this corner. Witnesses to corner location Bobby Sedgwick & Shelby Blindert

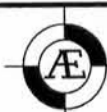
SKETCH:

LEGEND

- No. 8 x 30" rebar set with Grant County Aluminum Cap
- Number 4 x 24" Rebar set with red plastic "TIE" cap
- x-x- Approximate existing fence



0 30 60
 SCALE 1" = 30'



Austin Engineering LLC
 austinengineeringllc.com

4211 HWY 81 E, LANCASTER, WI 53813
 PHONE: 608-723-6363 FAX: 608-723-6702

JOB NO: 11s102
 G:\T5NR2W\26GCC
 H:\TIE\T5NR2W\84

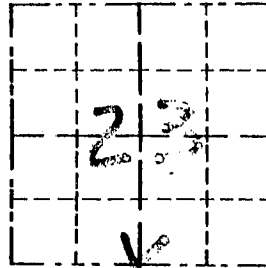
FIELDBOOK: TDSR
 DRAWN BY: AJ AUSTIN
 CREW: BS-SB

Survey Monument Record

TYPE OF MONUMENT 1 1/4" IRON BAR FND.

CORNER NO. 84
 SECTION 23
 TOWN 5N
 RANGE 2W

FIELD BOOK: 96-21
 PAGE (9)



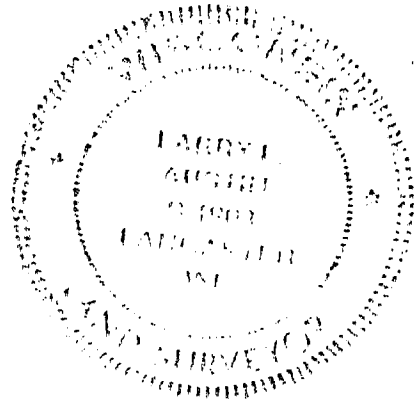
BASIS FOR MONUMENT LOCATION

(Use reverse side if necessary)

Show info such as: History of corner, with reference to Vol. and pg., dates, surveyor; exact description of monument replaced; if location computed, by taped or EDM traverse; landowner, remarks, etc.

CORNER SET IN 1832 BY HARVEY CLARKE. IN 1980 B. BOWDEN SET A 1 1/4" IRON BAR. IT ACCEPTED ITS LOCATION AFTER EDM TRAVERSE OF AREA.

SEAL:



CERTIFIED CORRECT

Larry R. Aust
 Registered Land Surveyor

DATE: 2/16/97

TIE SKETCH

Show at least three (3) ties and monument

LEGEND

- ⊙ 1 1/4" IRON BAR FOUND
- 1/2" x 15" IRON BAR SET
- EXISTING FENCE

