

U.S. PUBLIC LAND SURVEY MONUMENT RECORD - GRANT COUNTY, WI

Section 24, Town 5 North Range 2 West, Town of Liberty (a)

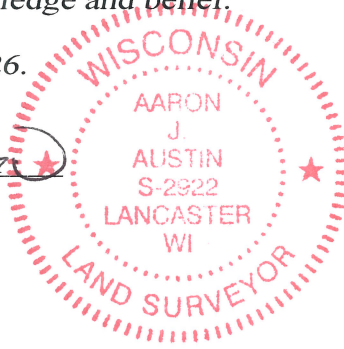
NOTE: This form is intended and designed to fulfill all requirements of the Wisconsin Administrative Code Chapter A-E 7.08, U.S. Public Land Survey Monument Record (3) (a) (b) (c) (d) (e) (f) (g) (h) (i).

CERTIFICATE: (i)

I, Aaron J. Austin, Wisconsin Professional Land Surveyor, do hereby certify that the corner location on this record was determined by me and/or under my direct supervision and that this U.S. Public Land Survey Monument Record is correct and complete to the best of my knowledge and belief.

Dated this 5th day of March, 2026.

Aaron J. Austin
Aaron J. Austin, PLS-2922



Grant County Coordinates:
NAD 83 (2011)
Northing: 537,606.96
Easting: 860,307.32

HISTORY OF CORNER ESTABLISHMENT:

Original corner was set in 1832 by Harvey Parke.
Larry Austin set a 3/4" Rebar and prepared a Survey Monument Record dated 2-16-1997.

DESCRIPTION OF CORNER EVIDENCE FOUND: (b) (f) (g) (h)

I found the 3/4" Rebar and one witness witness corner Larry set. I set three witness corners and verified the Monument's location with G.P.S. methods.

DESCRIPTION OF CORNER AND WITNESS MONUMENTS, references and accessories used to perpetuate the original or re-established location of this corner. (c) (d) (e)

Witnesses to corner location Shane Austin, Owen Austin, Tanner Austin.
Drawn by: Owen Austin.

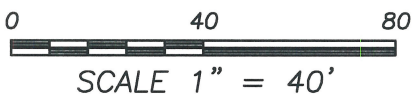
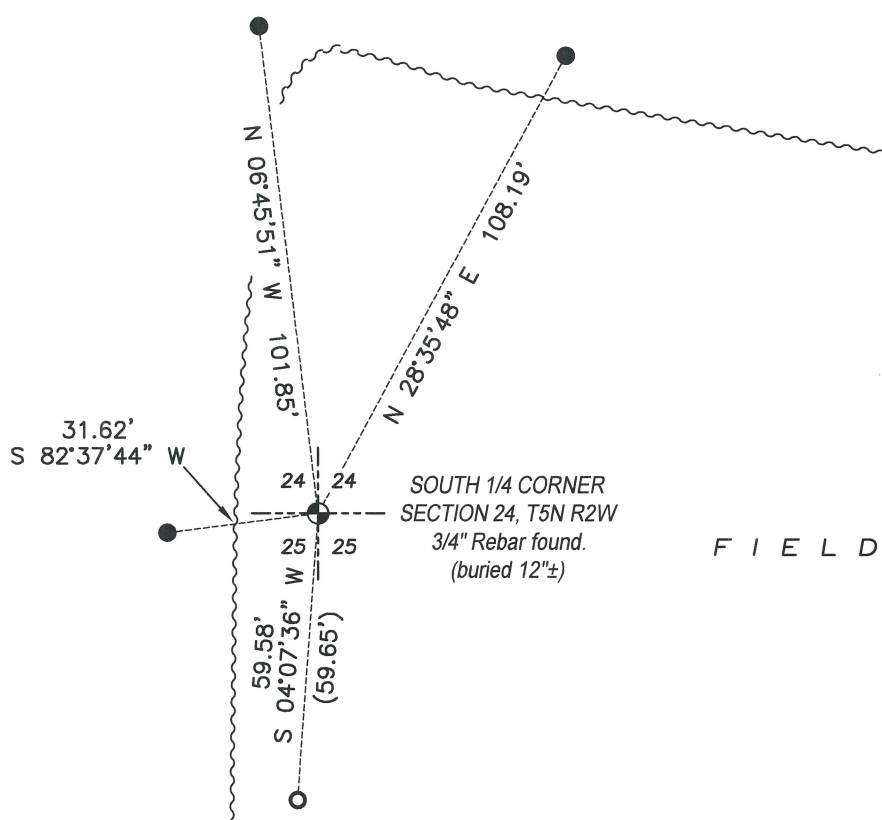
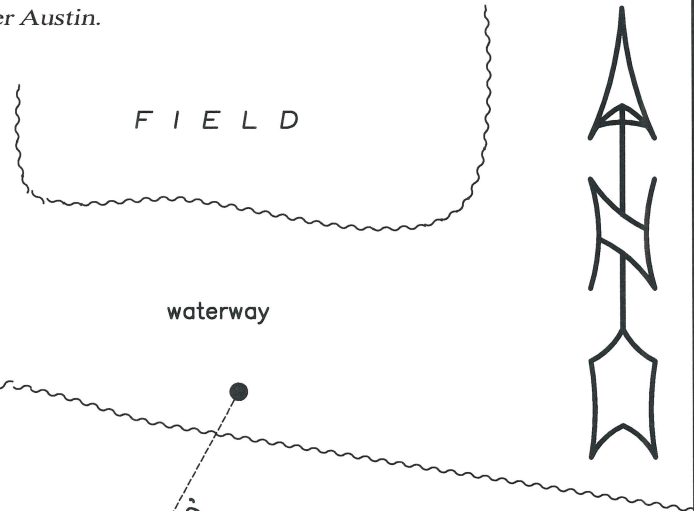
SKETCH:

LEGEND

- ⊕ Section Corner—as designated
- 1/2" rebar found
- 3/4" x 18" rebar set
- ~~~~~ Edge of field
- () Recorded as

O P E N

O P E N

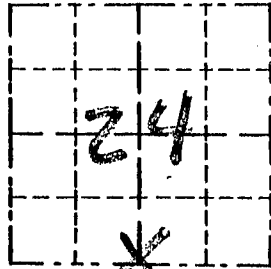


Survey Monument Record

TYPE OF MONUMENT 3/4" x 24" IRON BAR
SET

CORNER NO. 82
 SECTION 24
 TOWN 5 N
 RANGE 2 W

FIELD BOOK: 96-21
 PAGE (10)

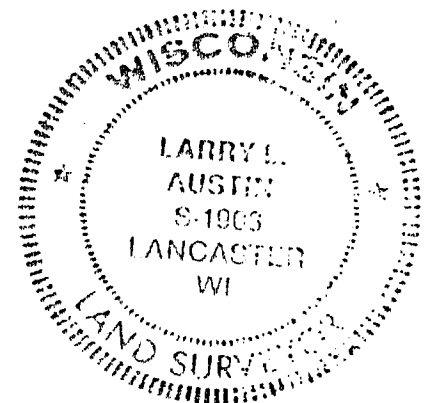


BASIS FOR MONUMENT LOCATION

(Use reverse side if necessary)

Show info such as: History of corner, with reference to Vol. and pg., dates, surveyor; exact description of monument replaced; if location computed, by taped or EDM traverse; landowner, remarks, etc.

SEAL:



CORNER SET IN 1832 BY HARVEY CLARKE, JOEL BARBER LOCATED THE CORNER AND SET BEARING TREES FOR THE CORNER. THE BEARING TREES WERE UNRECOVERABLE. I SET THE CORNER MIDWAY AND ONLINE BETWEEN THE SOUTHWEST AND THE SOUTHEAST CORNERS. VERIFIED ITS LOCATION USING EDM METHODS.

CERTIFIED CORRECT

Larry L. Austin
 Registered Land Surveyor
 DATE: 2/16/97

TIE SKETCH

Show at least three (3) ties and monument

LEGEND

- ⊙ 3/4" x 24" IRON BAR SET
- 1/2" x 15" IRON BAR SET
- - - EXISTING FENCE

