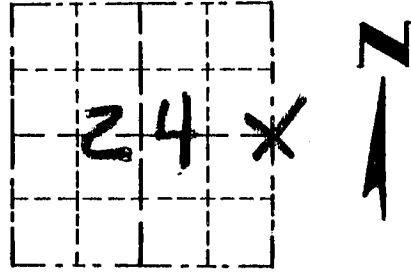


Survey Monument Record

TYPE OF MONUMENT 3/4" X 24" IRON BAR SET

CORNER NO. 80  
 SECTION 24  
 TOWN 5N  
 RANGE 2W

FIELD BOOK: 96-21  
 PAGE (6)



LOCATION  
 (Indicated by "X")

BASIS FOR MONUMENT LOCATION

(Use reverse side if necessary)

Show info such as: History of corner, with reference to Vol. and pg., dates, surveyor; exact description of monument replaced; if location computed, by taped or EDM traverse; landowner, remarks, etc.

SEAL:

CORNER SET IN 1832 BY SIBLEY.

NO RECORD OF CORNER FOUND

SINCE ORIGINAL SURVEY. CORNER

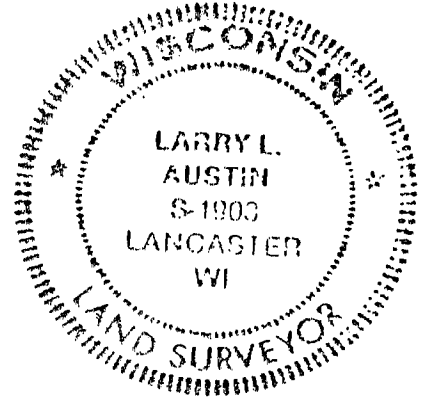
SET AT OCCUPIED FENCE CORNER.

THIS OCCUPIED FENCE CORNER FITS

WELL WITH CORNER 1/2 MILE NORTH,

SOUTH. VERIFIED IT LOCATION USING

EDM TRAVERSE OF AREA.



CERTIFIED CORRECT

*Larry L. Austin*  
 Registered Land Surveyor

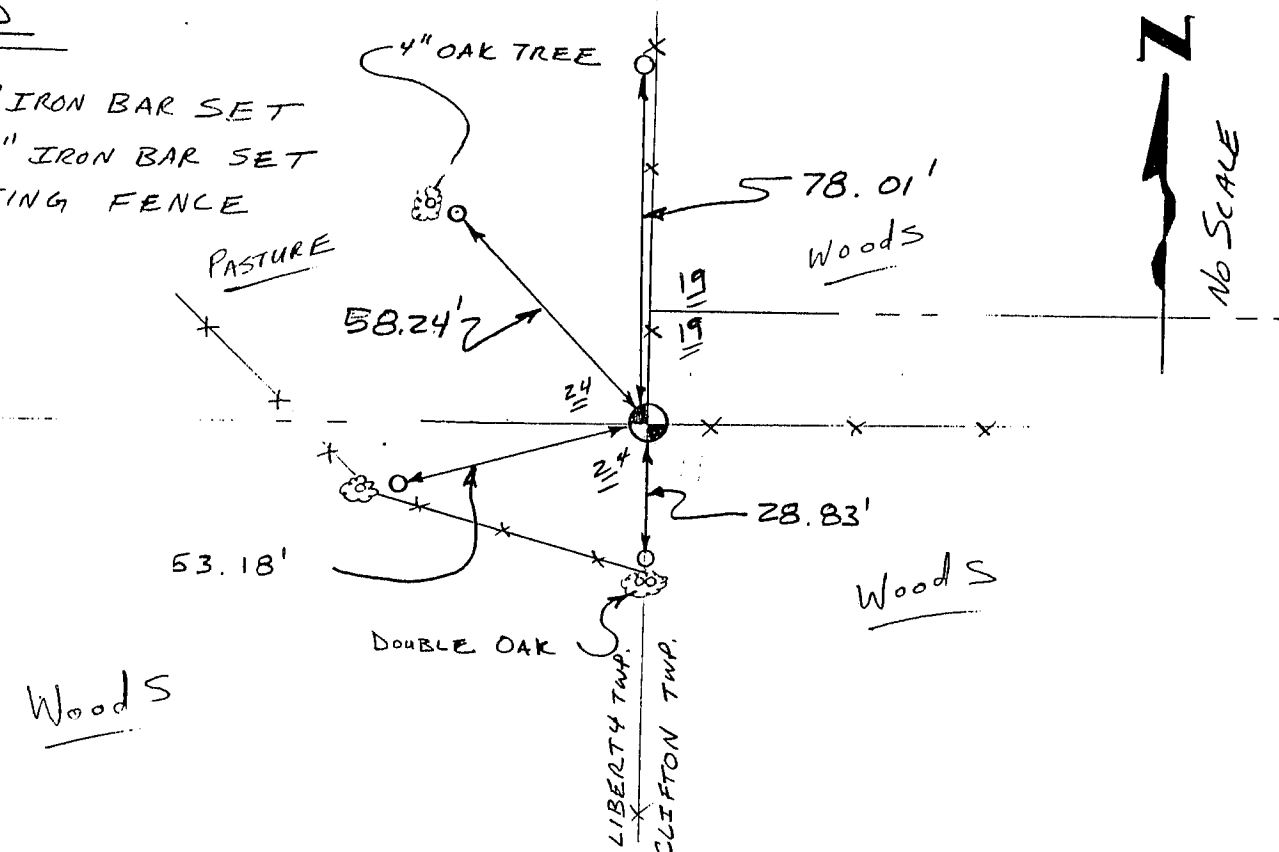
DATE: 2/16/97

TIE SKETCH

Show at least three (3) ties and monument

LEGEND

- 3/4" X 24" IRON BAR SET
- 1/2" X 15" IRON BAR SET
- ✕ EXISTING FENCE



WOODS