

U.S. PUBLIC LAND SURVEY MONUMENT RECORD - GRANT COUNTY, WI

Section 24, Town 5 North Range 2 West, Town of Liberty (a)

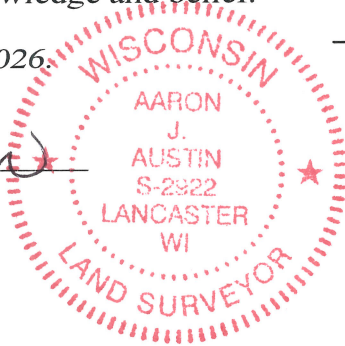
NOTE: This form is intended and designed to fulfill all requirements of the Wisconsin Administrative Code Chapter A-E 7.08, U.S. Public Land Survey Monument Record (3) (a) (b) (c) (d) (e) (f) (g) (h) (i).

CERTIFICATE: (i)

I, Aaron J. Austin, Wisconsin Professional Land Surveyor, do hereby certify that the corner location on this record was determined by me and/or under my direct supervision and that this U.S. Public Land Survey Monument Record is correct and complete to the best of my knowledge and belief.

Dated this 5th day of March, 2026.

Aaron J. Austin
Aaron J. Austin, PLS-2922



⊕ = CORNER LOCATION

Grant County Coordinates:
NAD 83 (2011)
Northing: 540,274.41
Easting: 857,642.19

HISTORY OF CORNER ESTABLISHMENT:

Original corner was set in 1832 by Harvey Parke.
Larry Austin set a 3/4" Rebar and prepared a Survey Monument Record dated 2-16-1997.

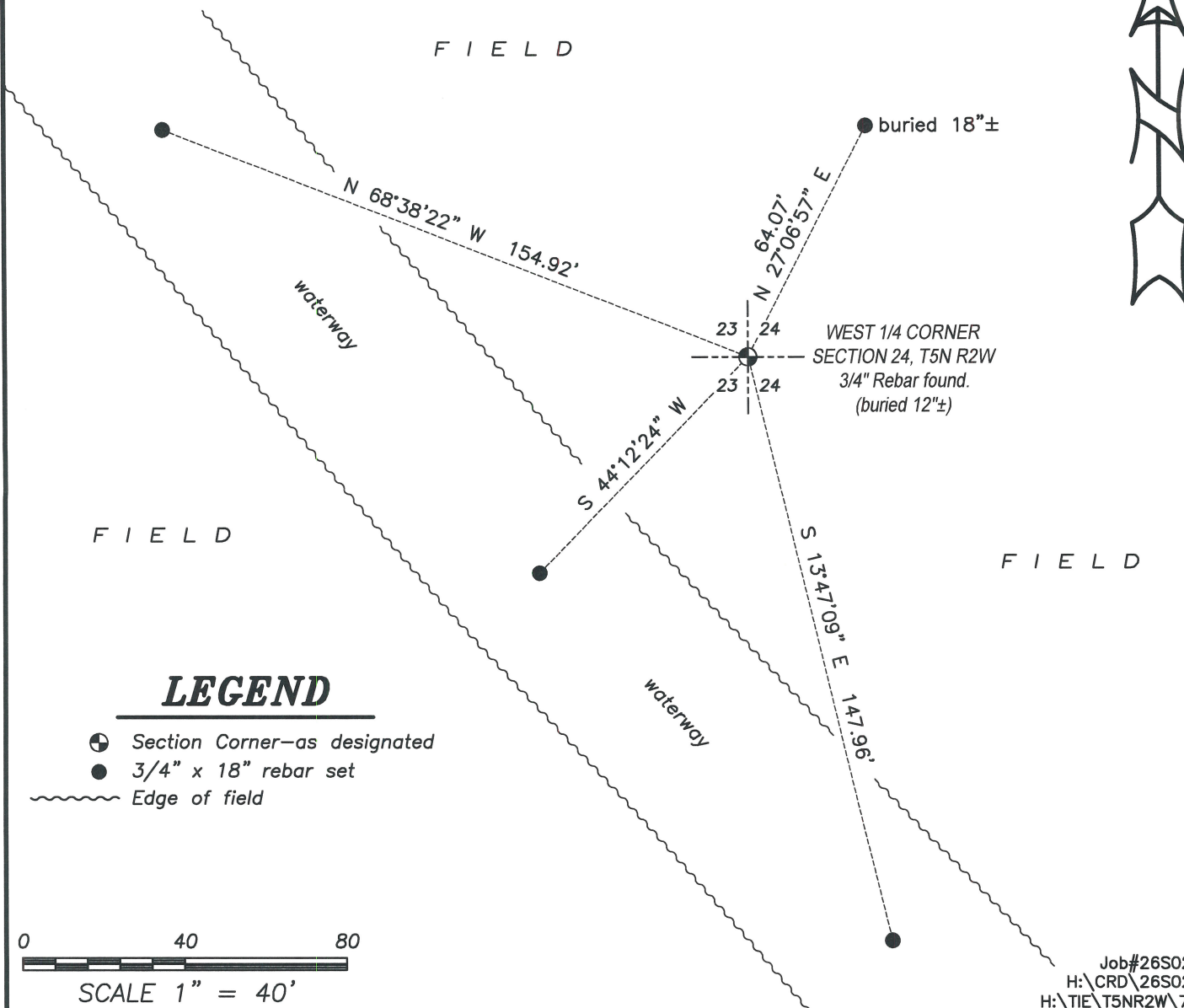
DESCRIPTION OF CORNER EVIDENCE FOUND: (b) (f) (g) (h)

I found the 3/4" Rebar Larry set. I set four witness corners and verified the Monument's location with G.P.S. methods.

DESCRIPTION OF CORNER AND WITNESS MONUMENTS, references and accessories used to perpetuate the original or re-established location of this corner. (c) (d) (e)

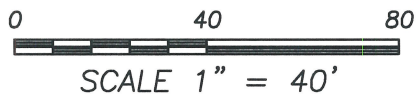
Witnesses to corner location Owen Austin, Tanner Austin.
Drawn by: Owen Austin.

SKETCH:



LEGEND

- ⊕ Section Corner—as designated
- 3/4" x 18" rebar set
- ~~~~~ Edge of field

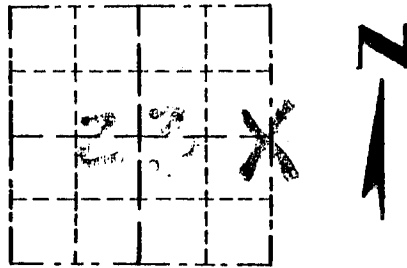


Survey Monument Record

TYPE OF MONUMENT 3/4" X 24" IRON BAR
SET

CORNER NO. 79
 SECTION 23
 TOWN 5N
 RANGE 2W

FIELD BOOK: 96-21
 PAGE _____



LOCATION
 (Indicated by "X")

BASIS FOR MONUMENT LOCATION

(Use reverse side if necessary)

Show info such as: History of corner, with reference to Vol. and pg., dates, surveyor; exact description of monument replaced; if location computed, by taped or EDM traverse; landowner, remarks, etc.

SEAL:

CORNER SET IN 1832 BY
 HARVEY CLAPKE IN 1980 B. BOWDEN.
 SET A 3/4" IRON BAR. I WAS
 UNABLE TO LOCATE THIS. I SET
 A 3/4" X 24" IRON BAR AT HIS
 LOCATION. CORNER IS MIDWAY
 AND ONLINE WITH THE NE AND
 SE CORNERS. VERIFIED ITS LOCATION
 USING EDM METHODS.



CERTIFIED CORRECT

Larry L. Austin
 Registered Land Surveyor

DATE: 2/16/97

TIE SKETCH

Show at least three (3) ties and monument

LEGEND

- ⊕ 3/4" X 24" IRON BAR SET
- 3/4" X 24" IRON BAR SET USED AS CORNERS OF L.L. AUSTIN SURVEY PLAT.

