

U.S. PUBLIC LAND SURVEY MONUMENT RECORD - GRANT COUNTY, WI

Section 23, Town 5 North Range 2 West, Town of Liberty (a)

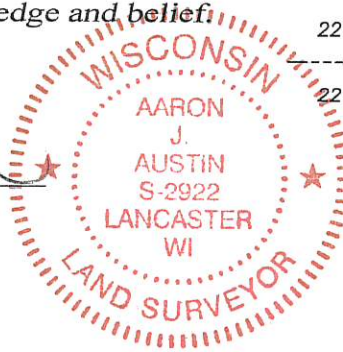
NOTE: This form is intended and designed to fulfill all requirements of the Wisconsin Administrative Code Chapter A-E 7.08, U.S. Public Land Survey Monument Record (3) (a) (b) (c) (d) (e) (f) (g) (h) (i).

CERTIFICATE: (i)

I, Aaron J. Austin, Wisconsin Professional Land Surveyor, do hereby certify that the corner location on this record was determined by me and/or under my direct supervision and that this U.S. Public Land Survey Monument Record is correct and complete to the best of my knowledge and belief.

Dated this 27th day of July, 2020.

Aaron J. Austin
 Aaron J. Austin, S-2922



⊕ = CORNER LOCATION

Grant County Coordinates:
 NAD 83 (2011)
 Northing: 540,238.59
 Easting: 852,318.08

HISTORY OF CORNER ESTABLISHMENT:

Original corner was set in 1832 by Henry Parke.
 Mathew Janiak set a 7/8" rebar and prepared a Survey Monument Record dated 3/8/1988.

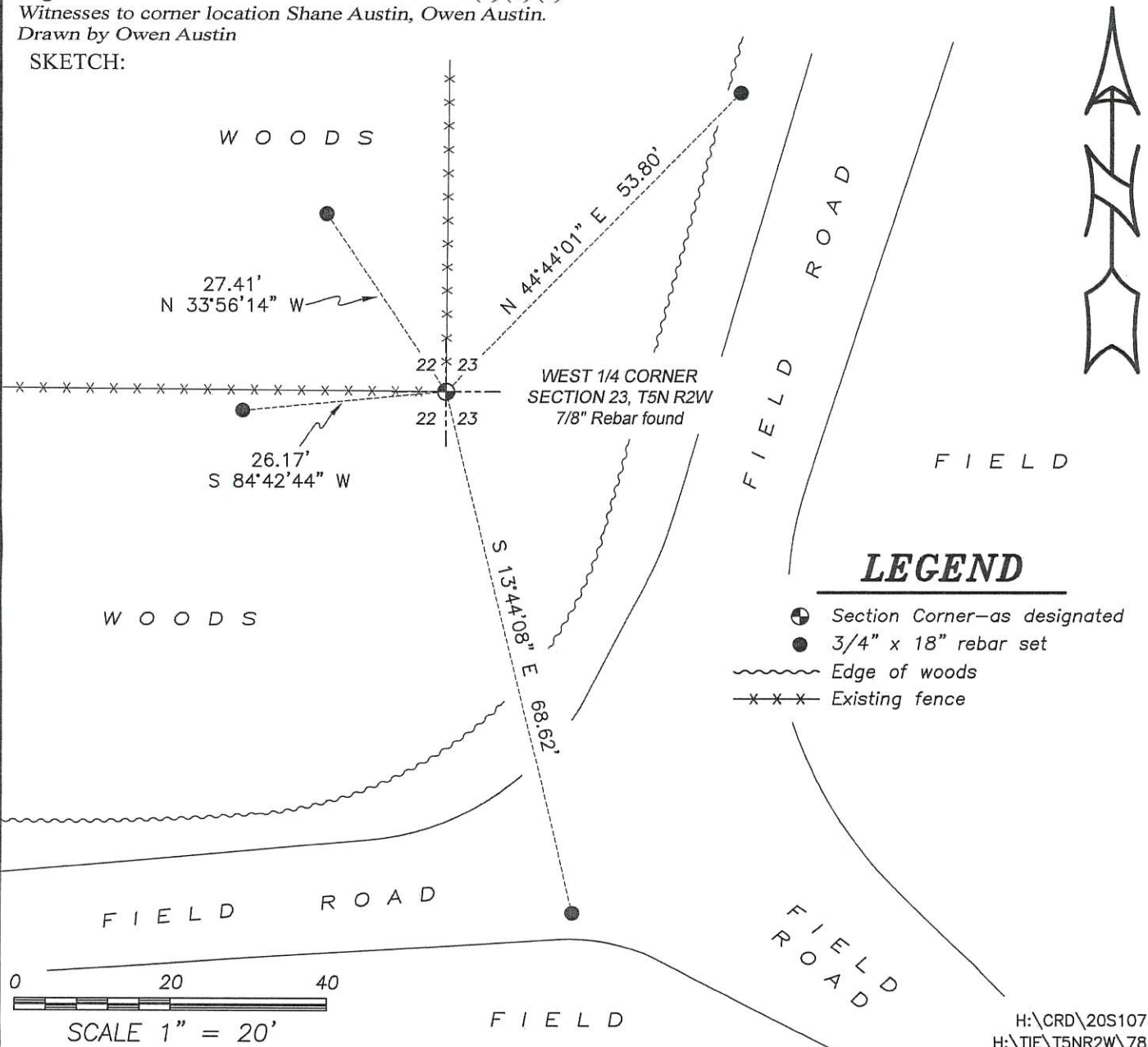
DESCRIPTION OF CORNER EVIDENCE FOUND: (b) (f) (g) (h)

I found the 7/8" rebar Janiak set. I set four witness corners after I verified the corners location with G.P.S. and E.D.M. methods.

DESCRIPTION OF CORNER AND WITNESS MONUMENTS: references and accessories used to perpetuate the original or re-established location of this corner. (c) (d) (e)

Witnesses to corner location Shane Austin, Owen Austin.
 Drawn by Owen Austin

SKETCH:



LEGEND

- ⊕ Section Corner—as designated
- 3/4" x 18" rebar set
- ~~~~~ Edge of woods
- x-x-x- Existing fence

RECORDED

MAR 9 1988

U. S. PUBLIC LAND SURVEY MONUMENT RECORD

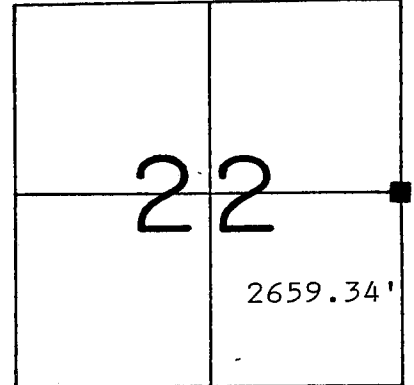
GRANT County, Wisconsin.

Basis for monument location.

Last reference to the corner was the original government survey. No evidence of the corner or its accessories could be located. Only evidence of the corner was that of a fence corner post with fencing running North and West. After traversing the Section I accepted the location of the fence corner as the best location for the corner and monument same.

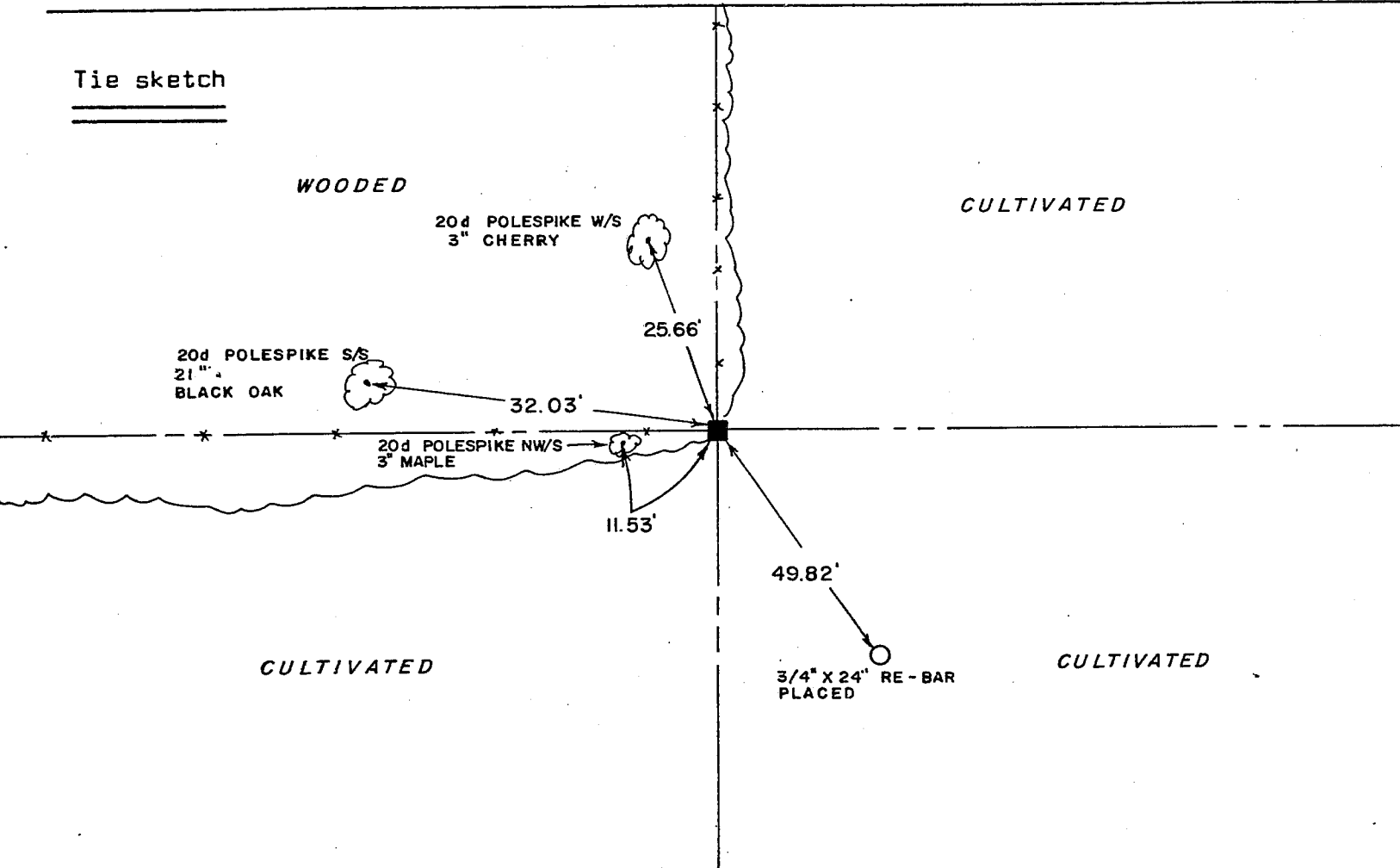


Section 22, T 5 N, R 2 W



Corner Location
(Indicate by - ■)

Tie sketch



I, _____ Certify that the corner location shown hereon this record was determined by me or under my direction and control and that this U. S. Public Land Survey Monument Record is correct and complete to the best of my knowledge and belief.

3-8-88
Date

Matthew J. Janiak
Registered Land Surveyor



P. 78