

52076

U.S. PUBLIC LAND SURVEY MONUMENT RECORD - GRANT COUNTY, WI

Section 21, Town 5 North Range 2 West, Town of Liberty (a)

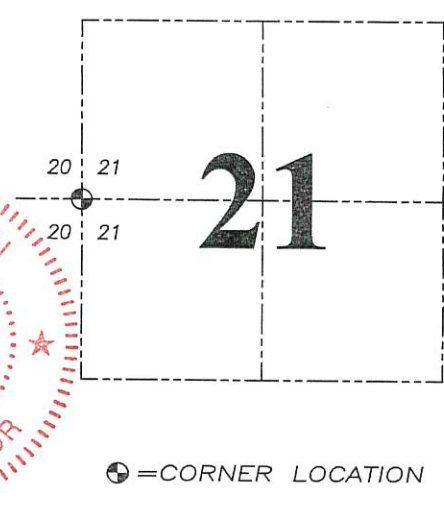
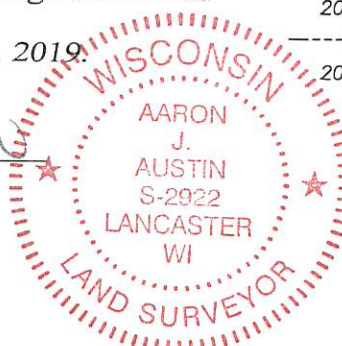
NOTE: This form is intended and designed to fulfill all requirements of the Wisconsin Administrative Code Chapter A-E 7.08, U.S. Public Land Survey Monument Record (3) (a) (b) (c) (d) (e) (f) (g) (h) (i).

CERTIFICATE: (i)

I, Aaron J. Austin, Wisconsin Professional Land Surveyor, do hereby certify that the corner location on this record was determined by me and/or under my direct supervision and that this U.S. Public Land Survey Monument Record is correct and complete to the best of my knowledge and belief.

Dated this 23th day of September, 2019.

Aaron J. Austin
Aaron J. Austin, S-2922



Grant County Coordinates:
NAD 83 (2011)
Northing: 540,319.37
Easting: 841,673.59

⊕ = CORNER LOCATION

HISTORY OF CORNER ESTABLISHMENT:

Original corner was set in 1832 by Henry Parke.
Matthew Janiak found a 2" pipe and prepared a Survey Monument Record dated 9/28/1992.

DESCRIPTION OF CORNER EVIDENCE FOUND: (b) (f) (g) (h)

I found the 2" Iron pipe Janiak established. I set four new witness corners after I verified the Monument's location with G.P.S. and E.D.M. methods.

DESCRIPTION OF CORNER AND WITNESS MONUMENTS, references and accessories used to perpetuate the original or re-established location of this corner. (c) (d) (e)

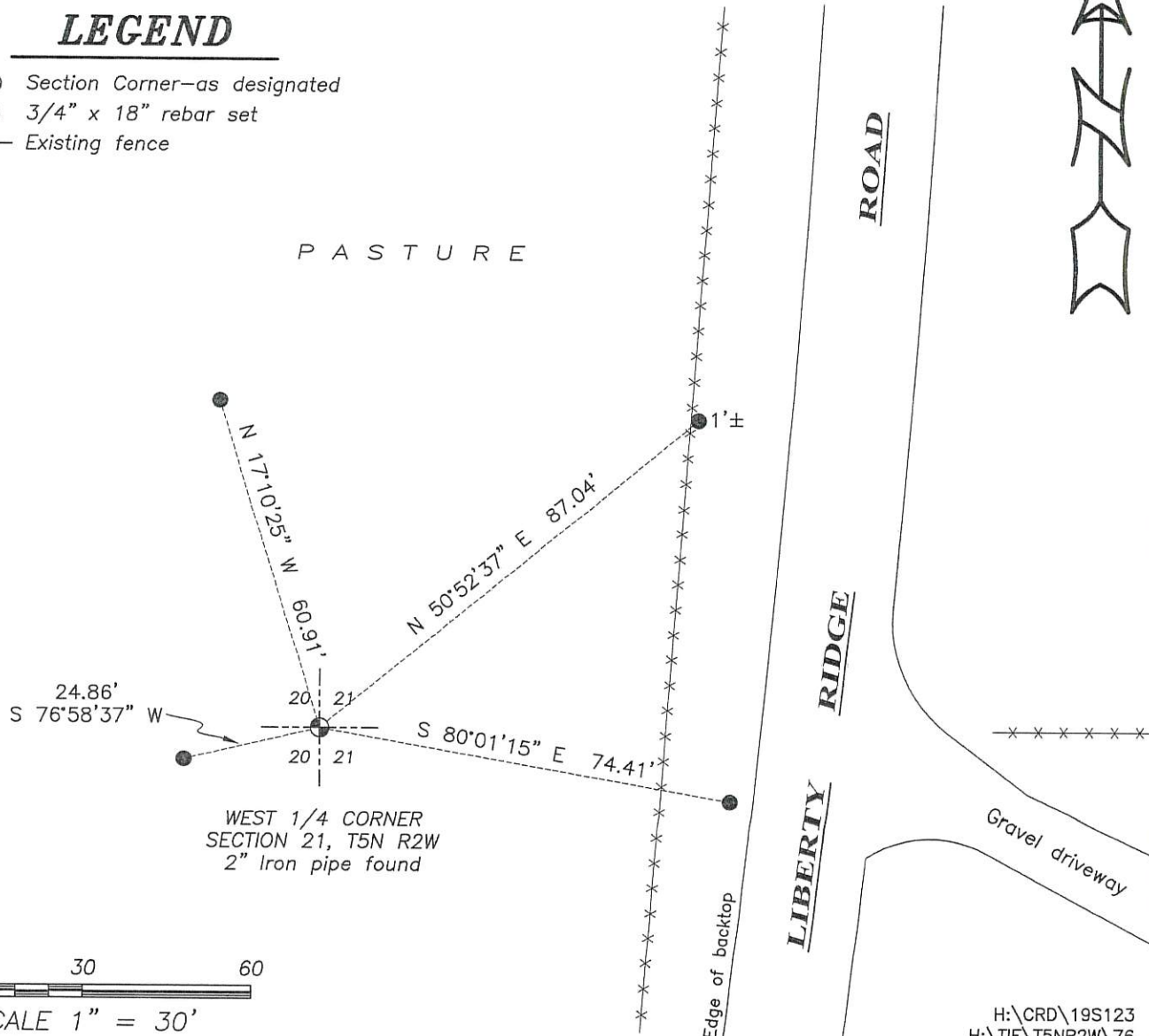
Witnesses to corner location Shane Austin, Owen Austin.

Drawn by: Owen Austin

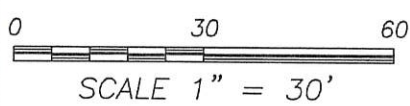
SKETCH:

LEGEND

- ⊕ Section Corner—as designated
- 3/4" x 18" rebar set
- x-x-x- Existing fence



WEST 1/4 CORNER
SECTION 21, T5N R2W
2" Iron pipe found



H:\CRD\19S123
H:\TIE\T5NR2W\76

SLF 30 1992

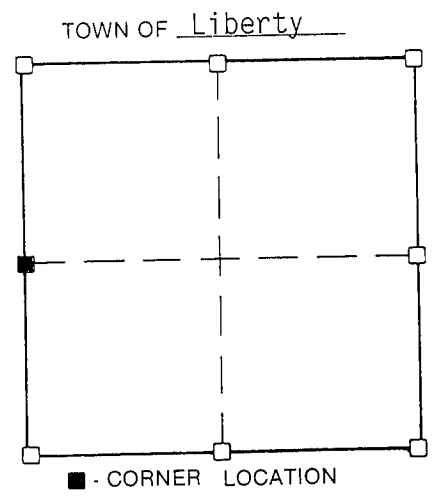
GOVERNMENT CORNER RECORD

West $\frac{1}{4}$ CORNER, SECTION 21, TOWNSHIP 5 NORTH, RANGE 2 EAST - WEST,
TOWN, CITY OR VILLAGE OF Liberty
TYPE OF MONUMENT: 2" iron pipe ELEVATION - M.S.L. DATUM _____

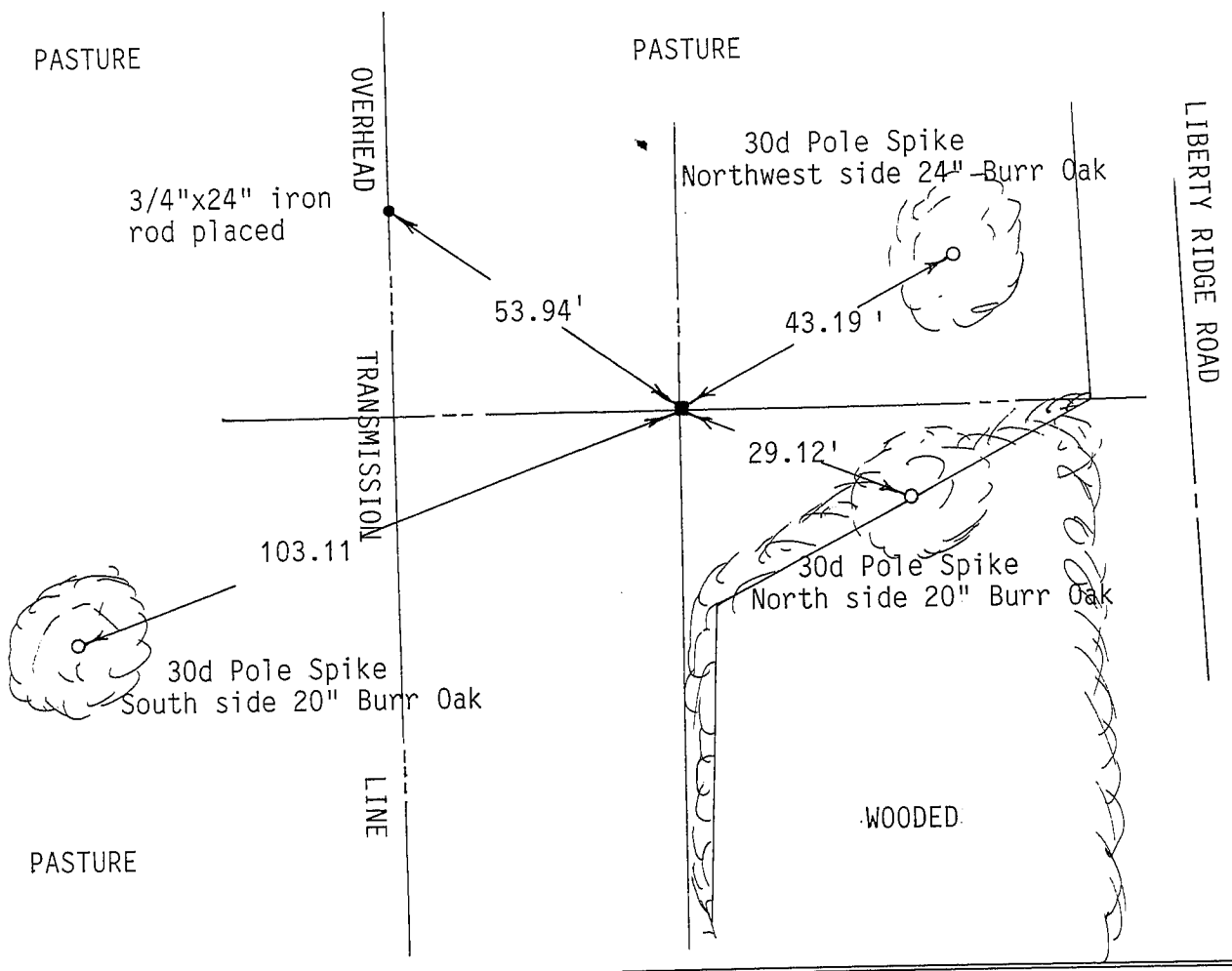
SECTION 21 T 5 N, R 2 EW

WITNESSES TO CORNER LOCATION

Matthew J. Janiak
Sean M. Walsh



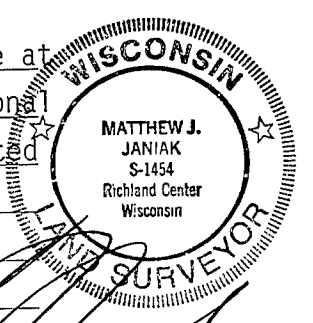
TIE SKETCH
(SHOW ALL HELPFUL FEATURES)



SURVEYOR'S CERTIFICATE

SEAL S. 1454

I, Matthew J. Janiak, DO HEREBY CERTIFY THAT I located a 2" iron pipe at the above corner. Corner was last used by L. Austin. Corner fit occupational evidence very well along with measurements to adjoining corners. I accepted this corner as correct and referenced it as shown hereon.



DATED THIS 28th DAY OF September, 1992

[Handwritten Signature]
REGISTERED LAND SURVEYOR