

# U.S. PUBLIC LAND SURVEY MONUMENT RECORD - GRANT COUNTY, WI

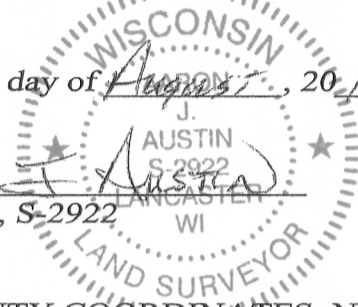
Section 19, Town 5 North Range 2 West, Town of Liberty

**CERTIFICATE:**

I, Aaron J. Austin, do hereby certify that the corner location on this record was determined by me and/or under my direct supervision and that this U.S. Public Land Survey Monument Record is correct and complete to the best of my knowledge and belief.

Dated this 15 day of August, 2013.

*Aaron J. Austin*  
 Aaron J. Austin, S-2922



● = CORNER LOCATION

GRANT COUNTY COORDINATES: N=540262.36' E=836376.62'

HISTORY OF CORNER ESTABLISHMENT:

1832 Henry Parke set original corner.  
 1844 Sam Wiltse measured to the corner (Book A, Page 226 & 227).  
 No other record of this corner was found.

DESCRIPTION OF CORNER EVIDENCE FOUND:

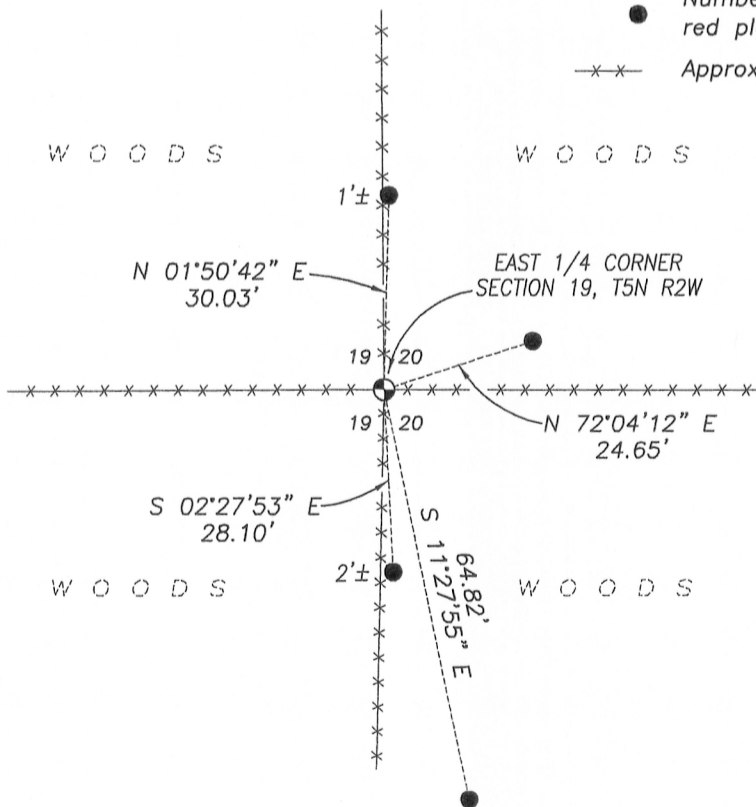
I found and accepted an existing 3" solid corner post in concrete at an existing fence intersection. Corner location was verified by E.D.M. and G.P.S methods.

DESCRIPTION OF CORNER AND WITNESS MONUMENTS, references and accessories used to perpetuate the original or re-established location of this corner. Witnesses to corner location Shane Austin.

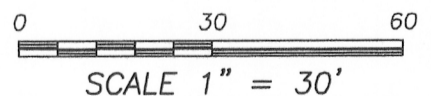
SKETCH:

LEGEND

- 3" Solid Corner post found in Concrete
- Number 4 x 24" Rebar set with red plastic "TIE" cap
- x-x- Approximate existing fence



Bearings are referenced to the Grant County Coordinate System (2011 adjustment) which was determined by G.P.S. observation.



**Austin Engineering LLC**  
 austinengineeringllc.com  
 4211 HWY 81 E, LANCASTER, WI 53813  
 PHONE: 608-723-6363 FAX: 608-723-6702

JOB NO: 11S192-A  
 G:\GRANTDOT\HWY61B  
 H:\TIE\T5NR2W\75

FIELDBOOK: TDSR  
 DRAWN BY: AJ AUSTIN  
 CREW: SW AUSTIN