

U.S. PUBLIC LAND SURVEY MONUMENT RECORD - GRANT COUNTY, WI

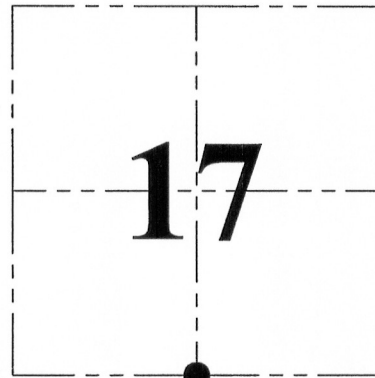
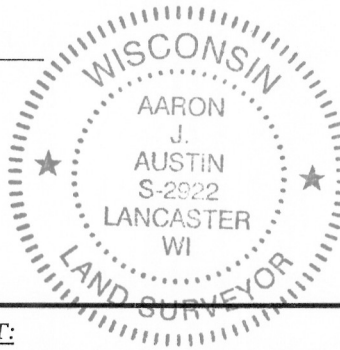
Section 17, Town 5 North Range 2 West, Town of Liberty

CERTIFICATE:

I, Aaron J. Austin, do hereby certify that the corner location on this record was determined by me and/or under my direct supervision and that this U.S. Public Land Survey Monument Record is correct and complete to the best of my knowledge and belief.

Dated this 10 th day of August, 2012.

Aaron J. Austin
 Aaron J. Austin, S-2922



● = CORNER LOCATION

HISTORY OF CORNER ESTABLISHMENT:

Corner originally set in 1832 by Henry Parke. Corner was shown on surveys filed on Pages 226 and 229, Book "A", Grant County Surveys. Corner location was shown on Right of Way and Track Map for the Chicago-Northwestern Railway dated 1917.

DESCRIPTION OF CORNER EVIDENCE FOUND:

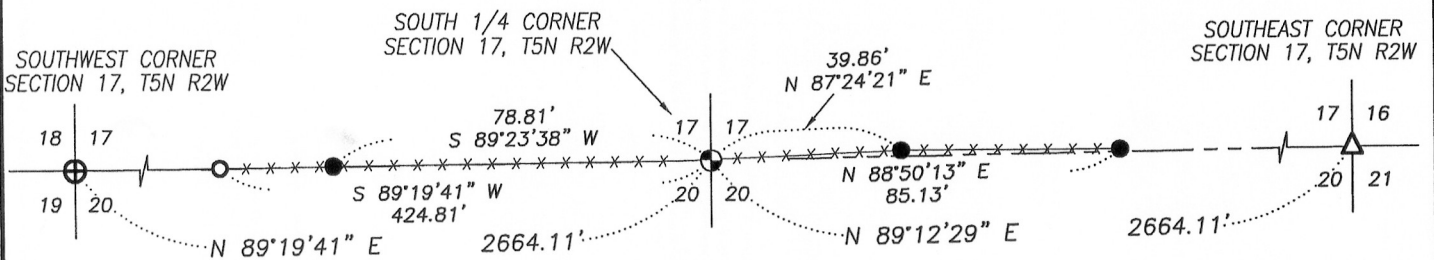
No evidence was found of the original corner. No evidence from the above mentioned surveys or the Railroad Right of Way map was found to help retrace this corner location. The corner was reset in an East-West fence line midway between the Southwest corner and the Southeast corner of Section 17.

DESCRIPTION OF CORNER AND WITNESS MONUMENTS, references and accessories used to perpetuate the original or re-established location of this corner. Witnesses to corner location Bobby Sedgwick and Shelby Blindert.

SKETCH:

LEGEND

- ⊙ No. 8 x 24" rebar set with Grant County Aluminum Cap
- Number 4 x 24" Rebar set with red plastic "TIE" cap
- ⊕ No. 8 rebar found with Grant County Aluminum Cap
- △ 1" diameter iron pipe found
- No. 6 rebar found
- x-x- Approximate existing fence



SKETCH NOT TO SCALE



4211 HWY 81 E, LANCASTER, WI 53813
 PHONE: 608-723-6363 FAX: 608-723-6702

JOB NO: 12s037
 G:\T5NR2W\09
 H:\TIE\T5NR2W\70

FIELDBOOK: TDSR
 DRAWN BY: AJ AUSTIN
 CREW: BS-SB