

52066

U.S. PUBLIC LAND SURVEY MONUMENT RECORD - GRANT COUNTY, WI

Section 22, Town 5 North Range 2 West, Town of Liberty (a)

NOTE: This form is intended and designed to fulfill all requirements of the Wisconsin Administrative Code Chapter A-E 7.08, U.S. Public Land Survey Monument Record (3) (a) (b) (c) (d) (e) (f) (g) (h) (i).

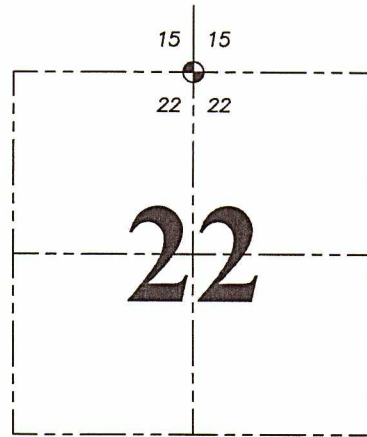
CERTIFICATE: (i)

I, Aaron J. Austin, Wisconsin Professional Land Surveyor, do hereby certify that the corner location on this record was determined by me and/or under my direct supervision and that this U.S. Public Land Survey Monument Record is correct and complete to the best of my knowledge and belief.

Dated this 22nd day of February, 2022.

Aaron J. Austin

Aaron J. Austin, S-2922



⊕ = CORNER LOCATION

Grant County Coordinates:
NAD 83 (2011)
Northing: 542,940.64
Easting: 849,641.45

HISTORY OF CORNER ESTABLISHMENT:

Original corner was set in 1832 by Henry Parke.
Mathew Janiak set a 3/4" Rebar and prepared a Survey Monument Record dated 3/8/1988.

DESCRIPTION OF CORNER EVIDENCE FOUND: (b) (f) (g) (h)

I found the 3/4" Rebar Janiak set. I set four witness corners after I verified the Monument's location with G.P.S. and E.D.M. methods.

DESCRIPTION OF CORNER AND WITNESS MONUMENTS, references and accessories used to perpetuate the original or re-established location of this corner. (c) (d) (e)

Witnesses to corner location Shane Austin.
Drawn by Owen Austin

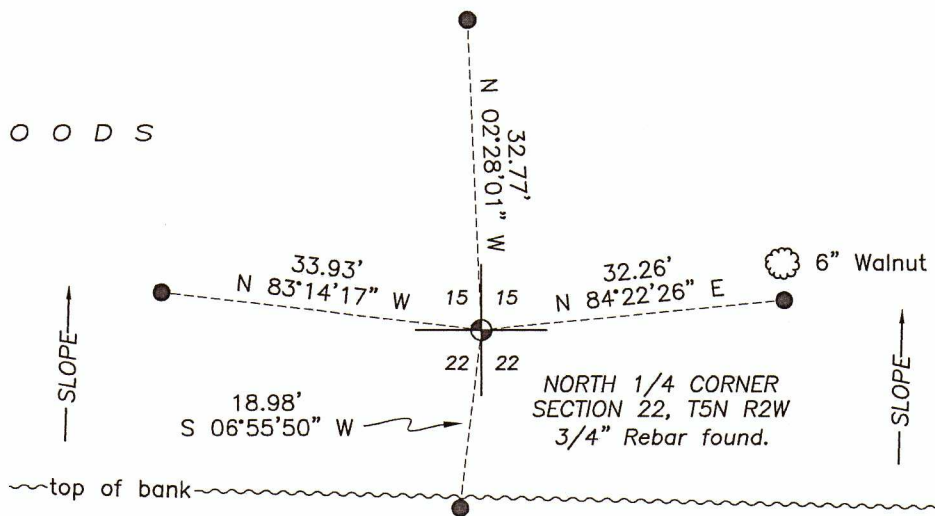
SKETCH:

LEGEND

- ⊕ Section Corner—as designated
- 5/8" x 18" rebar set
- ⊙ Existing tree

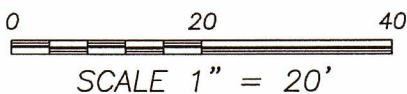
W O O D S

W O O D S



W O O D S

W O O D S



RECORDED

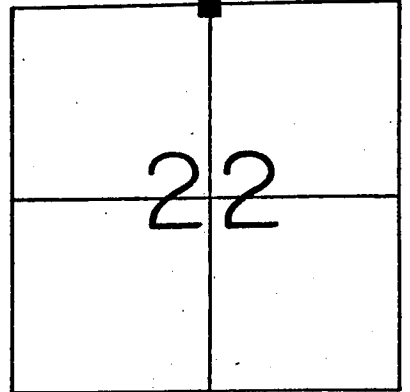
MAR 9 1988

U. S. PUBLIC LAND SURVEY MONUMENT RECORD
GRANT County, Wisconsin.

Basis for monument location.

Section 22, T 5 N, R 2

Last refernce to the corner was the original Government Survey. No evidence of the corner or its accessories could be located. I established the corner from the existing fence lines to the North, East and West. The fence from the West is at 24.75 South of the corner. This location fit very well with the travising of the Section. I monumented the corner with an iron bar and referenced it as shown.



Corner Location
(Indicate by - ■)

Tie sketch

TIES 20d POLESPIKES SET IN
BLAZE AT BOTTOM
OF TREE

WOODED

CLEARED

SW/S 15" BASSWOOD

38.17'

35.36'

54.84'

NW/S 12" R. OAK

23.91'
W/S 6" MAPLE

NE/S 4" W. OAK

WOODED

WOODED

I, _____ Certify that the corner location shown hereon this record was determined by me or under my direction and control and that this U. S. Public Land Survey Monument Record is correct and complete to the best of my knowledge and belief.

3-8-88
Date

Matthew J. Janiak
Registered Land Surveyor

