

# U.S. PUBLIC LAND SURVEY MONUMENT RECORD - GRANT COUNTY, WI

Section 14, Town 5 North Range 2 West, Town of Liberty (a)

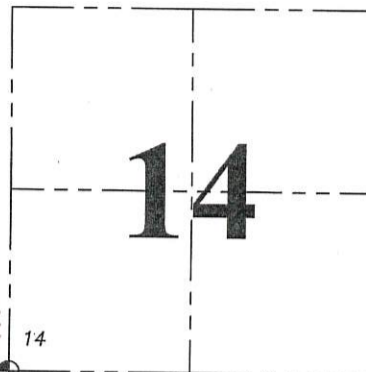
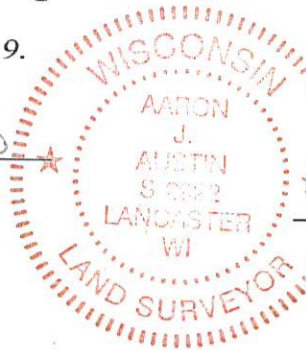
NOTE: This form is intended and designed to fulfill all requirements of the Wisconsin Administrative Code Chapter A-E 7.08, U.S. Public Land Survey Monument Record (3) (a) (b) (c) (d) (e) (f) (g) (h) (i).

CERTIFICATE: (i)

I, Aaron J. Austin, Wisconsin Professional Land Surveyor, do hereby certify that the corner location on this record was determined by me and/or under my direct supervision and that this U.S. Public Land Survey Monument Record is correct and complete to the best of my knowledge and belief.

Dated this 22nd day of April, 2019.

*Aaron J. Austin*  
Aaron J. Austin, S-2922



⊕ = CORNER LOCATION

Grant County Coordinates:  
NAD 83 (2011)  
Northing: 542,932.20  
Easting: 852,311.95

HISTORY OF CORNER ESTABLISHMENT:

Original corner was set in 1832 by Henry Parke.  
Larry Austin set an Aluminum Monument and prepared a Survey Monument Record dated 10/24/95.

DESCRIPTION OF CORNER EVIDENCE FOUND: (b) (f) (g) (h)

I found the monument set by L. Austin along with one witness monument. I set three additional witness corners after I verified the monument's location was with G.P.S. and E.D.M. methods.

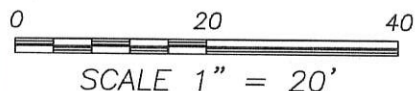
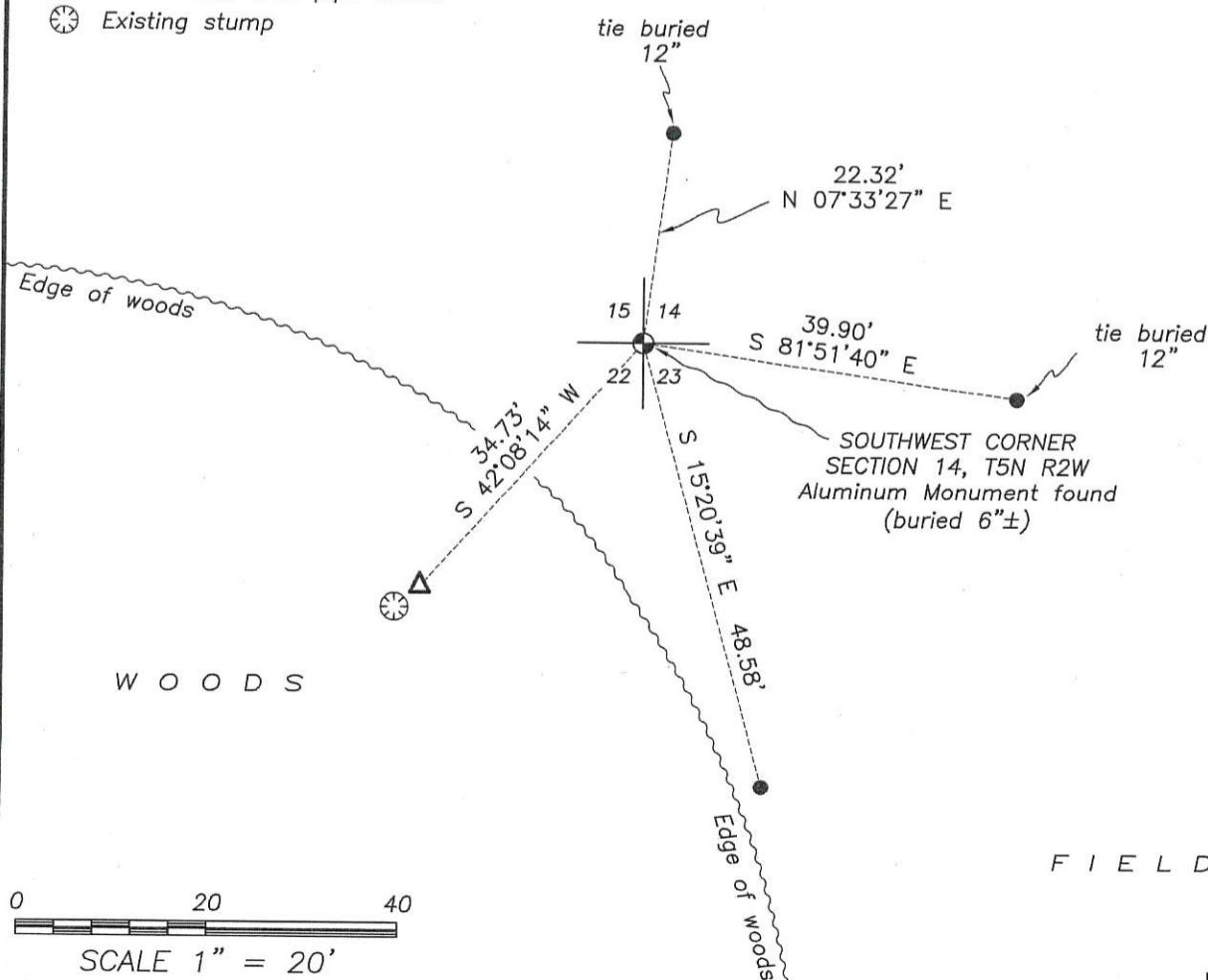
DESCRIPTION OF CORNER AND WITNESS MONUMENTS: references and accessories used to perpetuate the original or re-established location of this corner. (c) (d) (e)

Witnesses to corner location Shane Austin, Owen Austin.

SKETCH:

## LEGEND

- ⊕ Section Corner—as designated
- 3/4" x 18" rebar set
- △ 1" diameter iron pipe found
- ⊗ Existing stump



# GRANT COUNTY

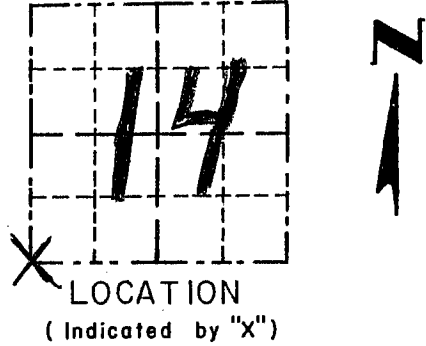
## Survey Monument Record

TYPE OF MONUMENT COUNTY MONUMENT  
 STATE PLANE COORDINATES: N \_\_\_\_\_  
 E \_\_\_\_\_  
 ELEVATION — M.S.L. DATUM: \_\_\_\_\_  
 THETA ANGLE: \_\_\_\_\_  
 FIELD BOOK: 9504  
 PAGE 25

CORNER NO. 65  
 SECTION 14  
 TOWN 5N  
 RANGE 2W  
SW COR.

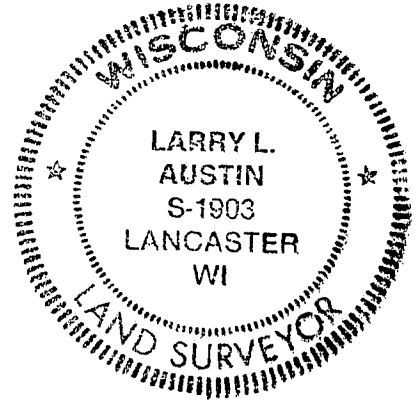
### BASIS FOR MONUMENT LOCATION

(Use reverse side if necessary)  
 Show info such as: History of corner, with reference to Vol. and pg., dates, surveyor; exact description of monument replaced; if location computed, by taped or EDM traverse; landowner, remarks, etc.



SEAL:

ORIGINAL CORNER SET  
 IN 1832 BY PARKE.  
 NO RECORD OF CORNER FOUND  
 SINCE THE ORIGINAL SURVEYS,  
 I PROPORTIONED THE CORNER  
 E-W BETWEEN S<sup>1</sup>/<sub>4</sub> CORNER  
 SECT. 15 & S<sup>1</sup>/<sub>4</sub> COR. SECT. 14.



CERTIFIED CORRECT

*Larry L. Austin*  
 Registered Land Surveyor

DATE: 10/24/95

### TIE SKETCH

Show at least three (3) ties and monument

