

U.S. PUBLIC LAND SURVEY MONUMENT RECORD - GRANT COUNTY, WI

Section 14, Town 5 North Range 2 West, Town of Liberty (a)

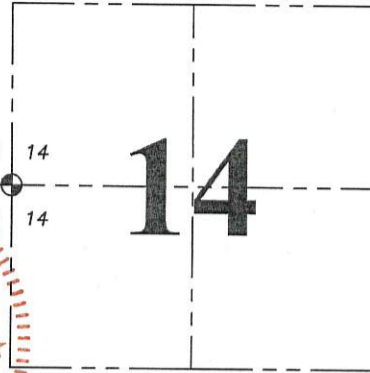
NOTE: This form is intended and designed to fulfill all requirements of the Wisconsin Administrative Code Chapter A-E 7.08, U.S. Public Land Survey Monument Record (3) (a) (b) (c) (d) (e) (f) (g) (h) (i).

CERTIFICATE: (i)

I, Aaron J. Austin, Wisconsin Professional Land Surveyor, do hereby certify that the corner location on this record was determined by me and/or under my direct supervision and that this U.S. Public Land Survey Monument Record is correct and complete to the best of my knowledge and belief.

Dated this 22nd day of April, 2019.

Aaron J. Austin
Aaron J. Austin, S-2922



⊕ = CORNER LOCATION

Grant County Coordinates:
NAD 83 (2011)
Northing: 545,572.17
Easting: 852,324.42

HISTORY OF CORNER ESTABLISHMENT:

Original corner was set in 1832 by Henry Parke.
Larry Austin set an Aluminum Monument and prepared a Survey Monument Record dated 10/24/1995.

DESCRIPTION OF CORNER EVIDENCE FOUND: (b) (f) (g) (h)

I found the Aluminum Monument set by L. Austin. I found two witness corners in good shape and one disturbed. I straightened one witness corner and set a new one after I verified the Monument's location with G.P.S. and E.D.M. methods.

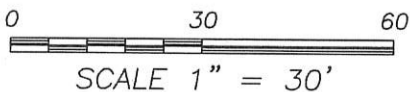
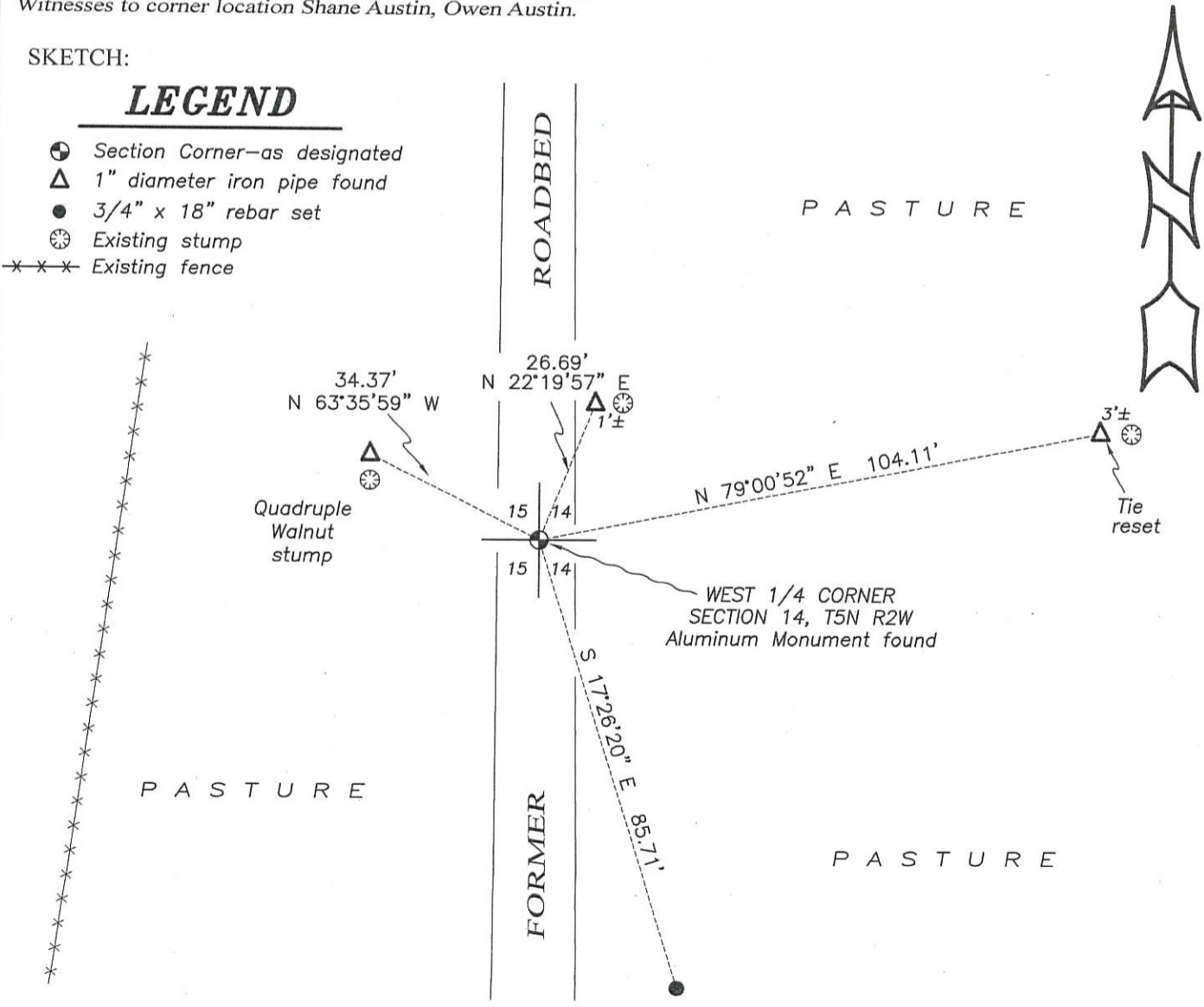
DESCRIPTION OF CORNER AND WITNESS MONUMENTS, references and accessories used to perpetuate the original or re-established location of this corner. (c) (d) (e)

Witnesses to corner location Shane Austin, Owen Austin.

SKETCH:

LEGEND

- ⊕ Section Corner—as designated
- △ 1" diameter iron pipe found
- 3/4" x 18" rebar set
- ⊗ Existing stump
- ××× Existing fence

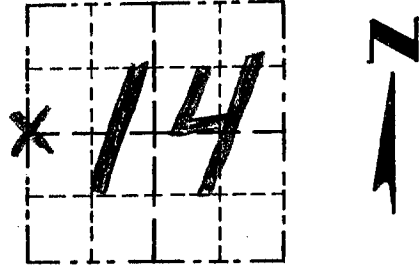


GRANT COUNTY

Survey Monument Record

TYPE OF MONUMENT COUNTY MONUMENT
 STATE PLANE COORDINATES: N _____
 E _____
 ELEVATION — M.S.L. DATUM: _____
 THETA ANGLE: _____
 FIELD BOOK: 9504
 PAGE: 25

CORNER NO. 58
 SECTION 14
 TOWN 5 N
 RANGE 2 W
W 1/4 COR.



LOCATION
 (Indicated by "X")

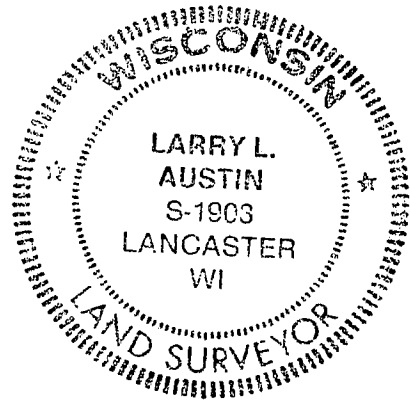
BASIS FOR MONUMENT LOCATION

(Use reverse side if necessary)

Show info such as: History of corner, with reference to Vol. and pg., dates, surveyor; exact description of monument replaced; if location computed, by taped or EDM traverse; landowner, remarks, etc.

SEAL:

ORIGINAL CORNER SET
 IN 1832 BY PARKE.
 NO RECORD OF CORNER FOUND
 SINCE ORIGINAL SURVEYS. I
 FOUND OLD E-W. FENCE REMNANTS
 AT RECORD DIST. OF 40 ch. from
 SW CORNER OF SECT 14; SET
 A COUNTY MONUMENT AT THIS
 LOCATION.



CERTIFIED CORRECT

Larry L. Austin
 Registered Land Surveyor

DATE: 10/24/95

TIE SKETCH

Show at least three (3) ties and monument

