

MAR 24 2000

GRANT COUNTY CERTIFIED LAND CORNER

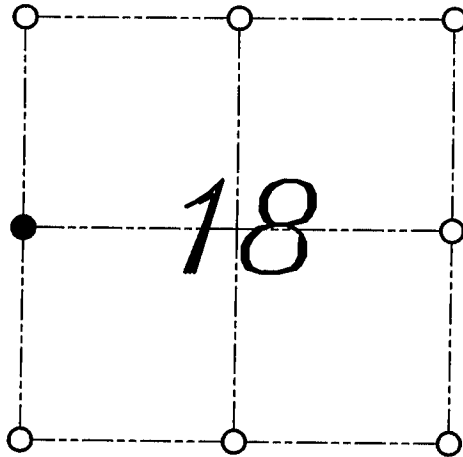
CERTIFICATE:

I, Larry L. Austin, do hereby certify that on the 9th day of September, 1999, I found evidence of the West 1/4 corner of Section 18, Town 5 North, Range 2 West, of the Fourth Principal Meridian, and I re-established said corner according to the Wisconsin Statutes as shown and described hereon.

DATED THIS 30th DAY OF JANUARY, 2000

Larry L. Austin
Larry L. Austin S-1903

CORNER NUMBER 54



● = CORNER LOCATION
WEST 1/4 CORNER OF
SECTION 18, T 5 N R 2 W
TOWN OF LIBERTY



HISTORY OF ORIGINAL CORNER ESTABLISHMENT:

Original corner not set by original surveys. Corner was established in 1844 by S. Wiltse. In 1875 Joel Barber tied to this corner and established bearing trees.

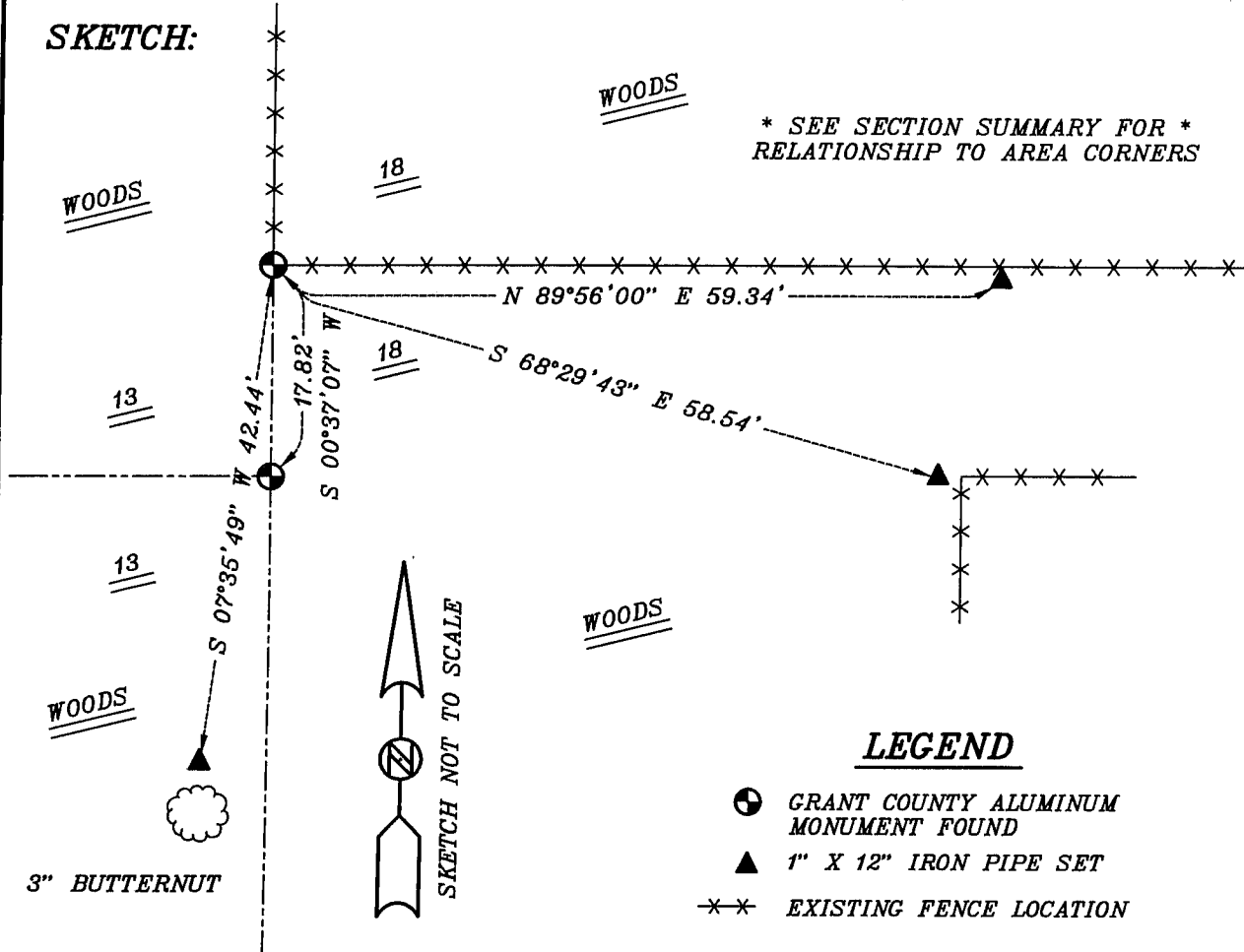
DESCRIPTION OF CORNER EVIDENCE FOUND:

No evidence of the bearing trees were found. I found an existing fence corner and accepted it's location after an E.D.M. and G.P.S. traverse of the area.

DESCRIPTION OF CORNER AND WITNESS MONUMENTS, references and accessories used to perpetuate the original or re-established location of this corner

WITNESS TO THE CORNER LOCATION: SHELBY BLINDERT ; BOBBY SEDGWICK

SKETCH:



* SEE SECTION SUMMARY FOR *
RELATIONSHIP TO AREA CORNERS

LEGEND

- GRANT COUNTY ALUMINUM MONUMENT FOUND
- ▲ 1" X 12" IRON PIPE SET
- *-* EXISTING FENCE LOCATION