

# U.S. PUBLIC LAND SURVEY MONUMENT RECORD - GRANT COUNTY, WI

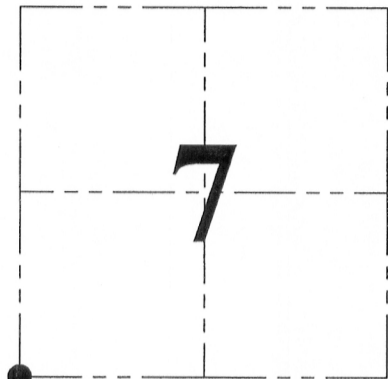
Section 7, Town 5 North Range 2 West, Town of Liberty

**CERTIFICATE:**

I, Aaron J. Austin, do hereby certify that the corner location on this record was determined by me and/or under my direct supervision and that this U.S. Public Land Survey Monument Record is correct and complete to the best of my knowledge and belief.

Dated this 15 day of August, 2013.

*Aaron J. Austin*  
 Aaron J. Austin, S-2922



● = CORNER LOCATION

GRANT COUNTY COORDINATES: N=548257.24 E=831052.72

HISTORY OF CORNER ESTABLISHMENT:

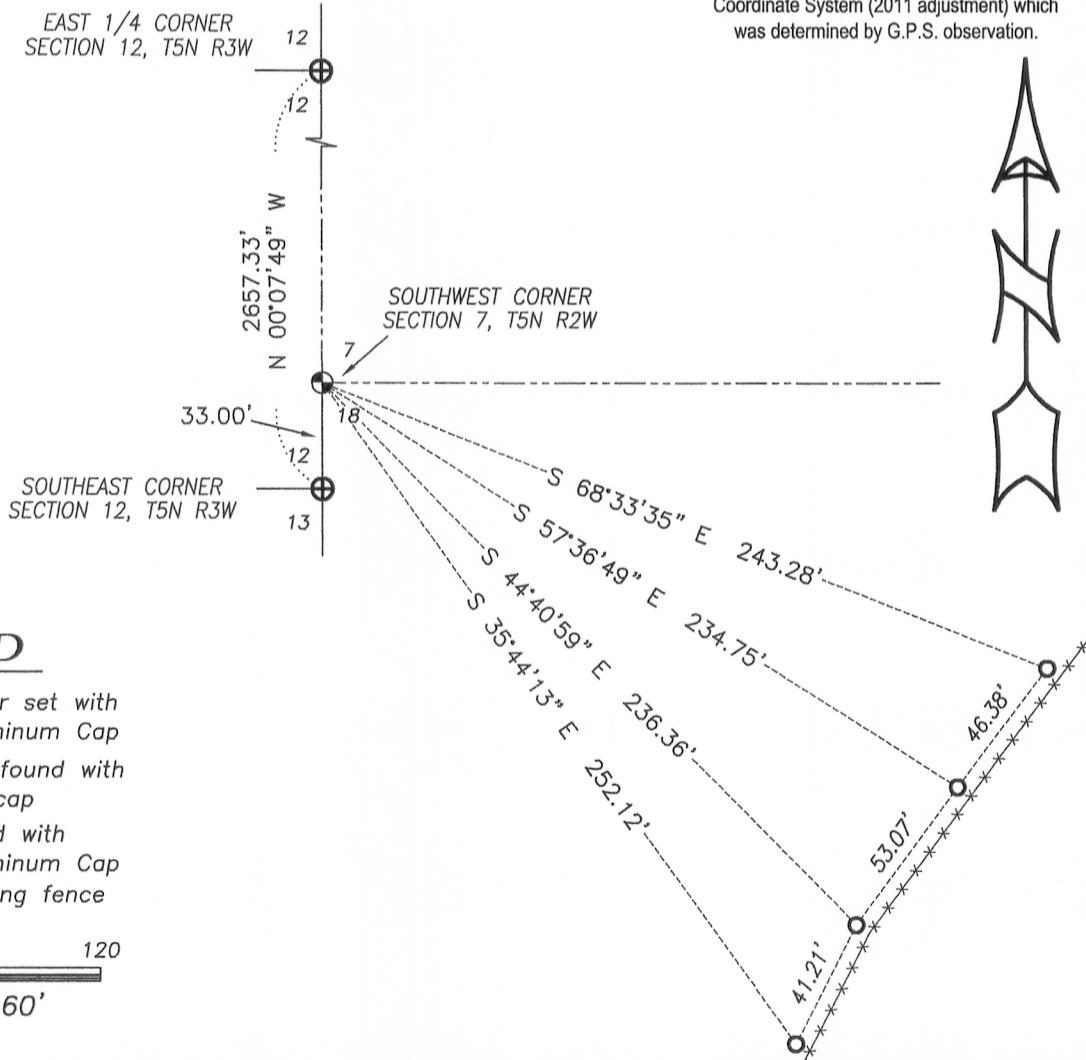
Corner was originally set by Henry Parke in 1832.  
 No other record of this corner was found.

DESCRIPTION OF CORNER EVIDENCE FOUND:

Corner was set on the East line of Section 12 at the recorded offset.  
 Corner location was verified by E.D.M. and G.P.S methods.

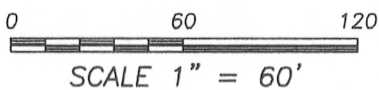
DESCRIPTION OF CORNER AND WITNESS MONUMENTS, references and accessories used to perpetuate the original or re-established location of this corner. Witnesses to corner location Shane Austin.

SKETCH:



**LEGEND**

- No. 8 x 30" rebar set with Grant County Aluminum Cap
- Number 4 Rebar found with red plastic "TIE" cap
- ⊕ No. 8 rebar found with Grant County Aluminum Cap
- x-x- Approximate existing fence



**Austin Engineering LLC**  
 austinengineeringllc.com

4211 HWY 81 E, LANCASTER, WI 53813  
 PHONE: 608-723-6363 FAX: 608-723-6702

JOB NO: 11S192-A  
 G:\GRANTDOT\HWY61B  
 H:\TIE\T5NR2W\53

FIELDBOOK: TDSR  
 DRAWN BY: AJ AUSTIN  
 CREW: SW AUSTIN