

U.S. PUBLIC LAND SURVEY MONUMENT RECORD - GRANT COUNTY, WI

Section 7, Town 5 North Range 2 West, Town of Liberty (a)

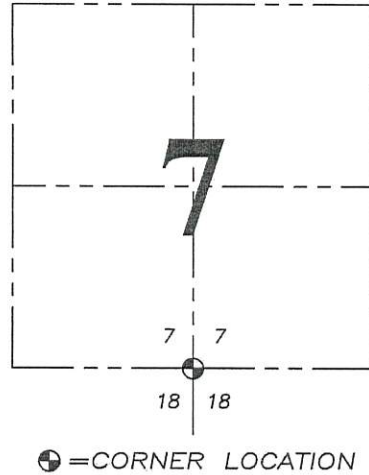
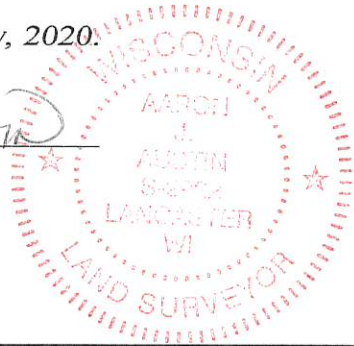
NOTE: This form is intended and designed to fulfill all requirements of the Wisconsin Administrative Code Chapter A-E 7.08, U.S. Public Land Survey Monument Record (3) (a) (b) (c) (d) (e) (f) (g) (h) (i).

CERTIFICATE: (i)

I, Aaron J. Austin, Wisconsin Professional Land Surveyor, do hereby certify that the corner location on this record was determined by me and/or under my direct supervision and that this U.S. Public Land Survey Monument Record is correct and complete to the best of my knowledge and belief.

Dated this 14th day of January, 2020.

Aaron J. Austin (Signature)
Aaron J. Austin, S-2922



Grant County Coordinates:
NAD 83 (2011)
Northing: 548,251.51
Easting: 833,681.42

HISTORY OF CORNER ESTABLISHMENT:

Original corner was set in 1832 by Harvey Parke.
David Davis set a 1" Iron Pipe on a Plat of Survey dated 11/11/1980.
Larry Austin found a 1" Iron Pipe and prepared a Survey Monument Record dated 1/4/1999.

DESCRIPTION OF CORNER EVIDENCE FOUND: (b) (f) (g) (h)

I found the 1" Iron Pipe David Davis set. I found two witness corners set by Larry Austin. I set two additional witness corners after I verified the Monument's location G.P.S. and E.D.M. methods.

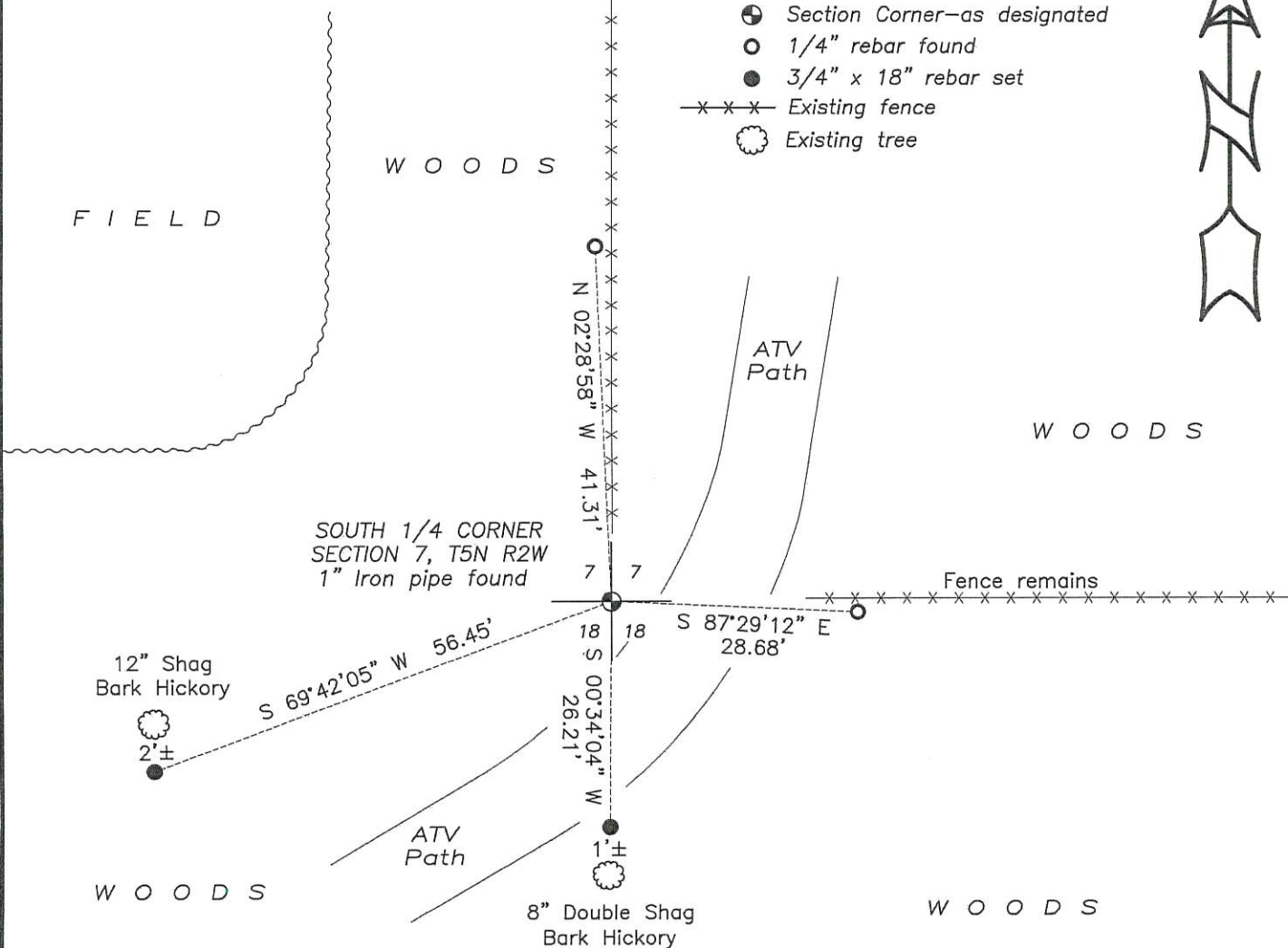
DESCRIPTION OF CORNER AND WITNESS MONUMENTS, references and accessories used to perpetuate the original or re-established location of this corner. (c) (d) (e)

Witnesses to corner location Shane Austin, Owen Austin.
Drawn by: Owen Austin

SKETCH:

LEGEND

- Section Corner—as designated
1/4" rebar found
3/4" x 18" rebar set
Existing fence
Existing tree



SCALE 1" = 20'

RECEIVED

By Land Information Office at 9:49 am, Jan 29, 2020

GRANT COUNTY CERTIFIED LAND CORNER

CORNER NO. 52

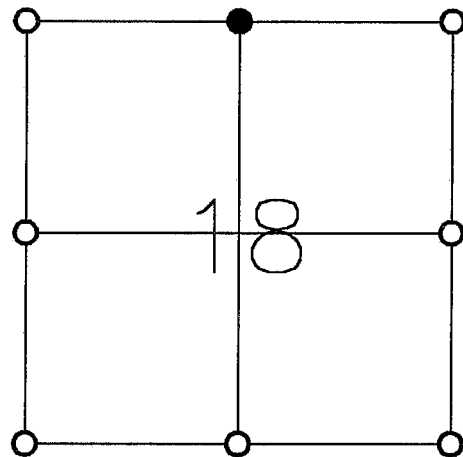
CERTIFICATE:

I, LARRY L. AUSTIN, DO HEREBY CERTIFY THAT ON 30 DAY OF SEPTEMBER, 1998, I FOUND OCCUPATIONAL EVIDENCE OF THE NORTH 1/4 CORNER OF SECTION 18, TOWN 5 NORTH, RANGE 2 WEST, OF THE FOURTH PRINCIPAL MERIDIAN, AND I RE-ESTABLISHED SAID CORNER ACCORDING TO THE WISCONSIN STATUTES AS SHOWN AND DESCRIBED HEREON.

DATED THIS 4 DAY OF JANUARY, 1999

Larry L. Austin
LARRY L. AUSTIN S-1903

T 5 N R 2 W
TOWN OF LIBERTY



● = CORNER LOCATION



SEAL

HISTORY OF ORIGINAL CORNER ESTABLISHMENT:

CORNER SET IN 1832 BY HARVEY PARKE.

DESCRIPTION OF CORNER EVIDENCE FOUND:

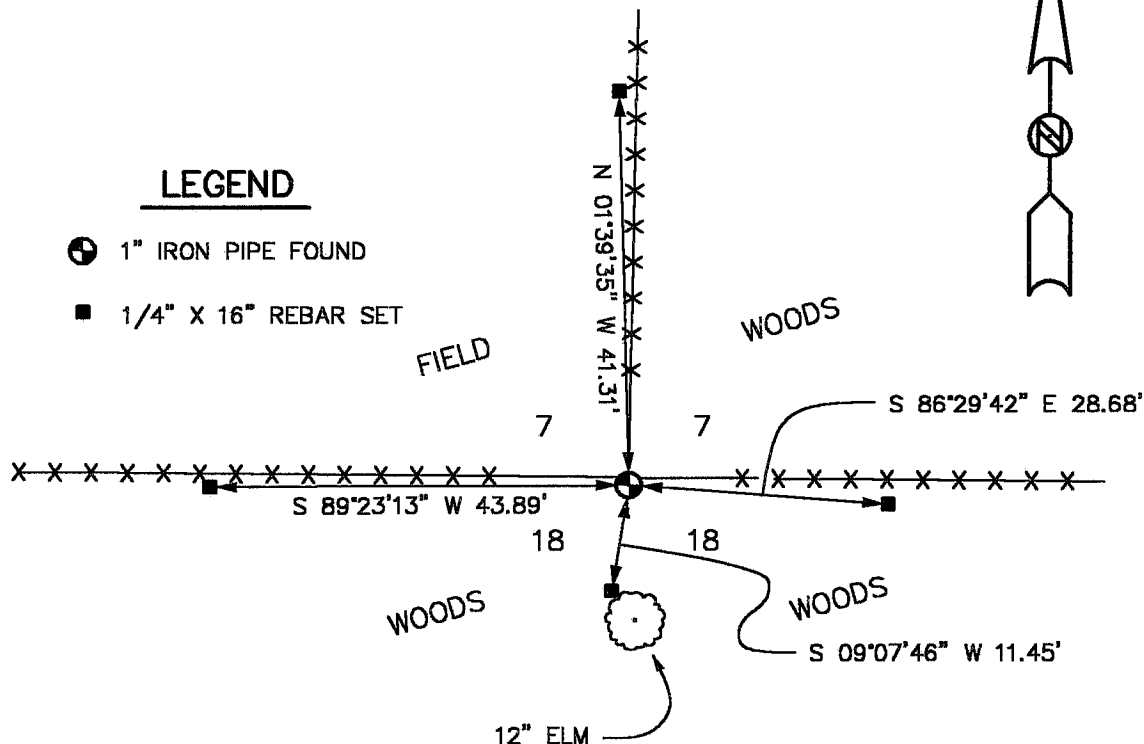
I FOUND A 1" IRON PIPE AT AN OCCUPIED FENCE CORNER.
VERIFIED THIS LOCATION USING G.P.S. AND E.D.M. METHODS.

DESCRIPTION OF CORNER AND WITNESS MONUMENTS, REFERENCES AND ACCESSORIES USED TO PERPETUATE THE ORIGINAL OR RE-ESTABLISHED LOCATION OF THIS CORNER:

WITNESS TO THE CORNER LOCATION:

BOBBY SEDGWICK
SHELBY BLINDERT

SKETCH:



LEGEND

- 1" IRON PIPE FOUND
- 1/4" X 16" REBAR SET

NOT TO SCALE

C:\EPSA\PROGRAM\TIE\T5NR2W\18N