

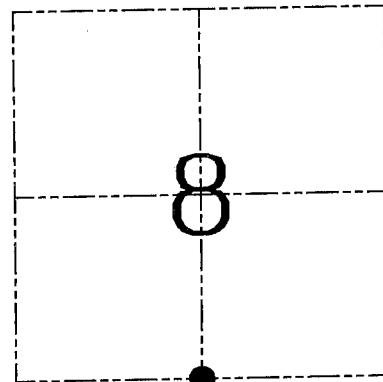
**U.S. PUBLIC LAND SURVEY MONUMENT RECORD – GRANT COUNTY, WI**  
**Section 8, Town 5 North Range 2 West, Town of Liberty**

CERTIFICATE

I, Larry L. Austin, do hereby certify that the corner location on this record was determined by me and/or under my direct supervision and that this U.S. public land survey monument record is correct and complete to the best of my knowledge and belief.

Dated this 12th day of July, 2005

*Larry L. Austin*  
 Larry L. Austin S-1903



● = CORNER LOCATION

HISTORY OF CORNER ESTABLISHMENT

Corner was originally set in 1832 by Parke.  
 No other record of the corner was found.

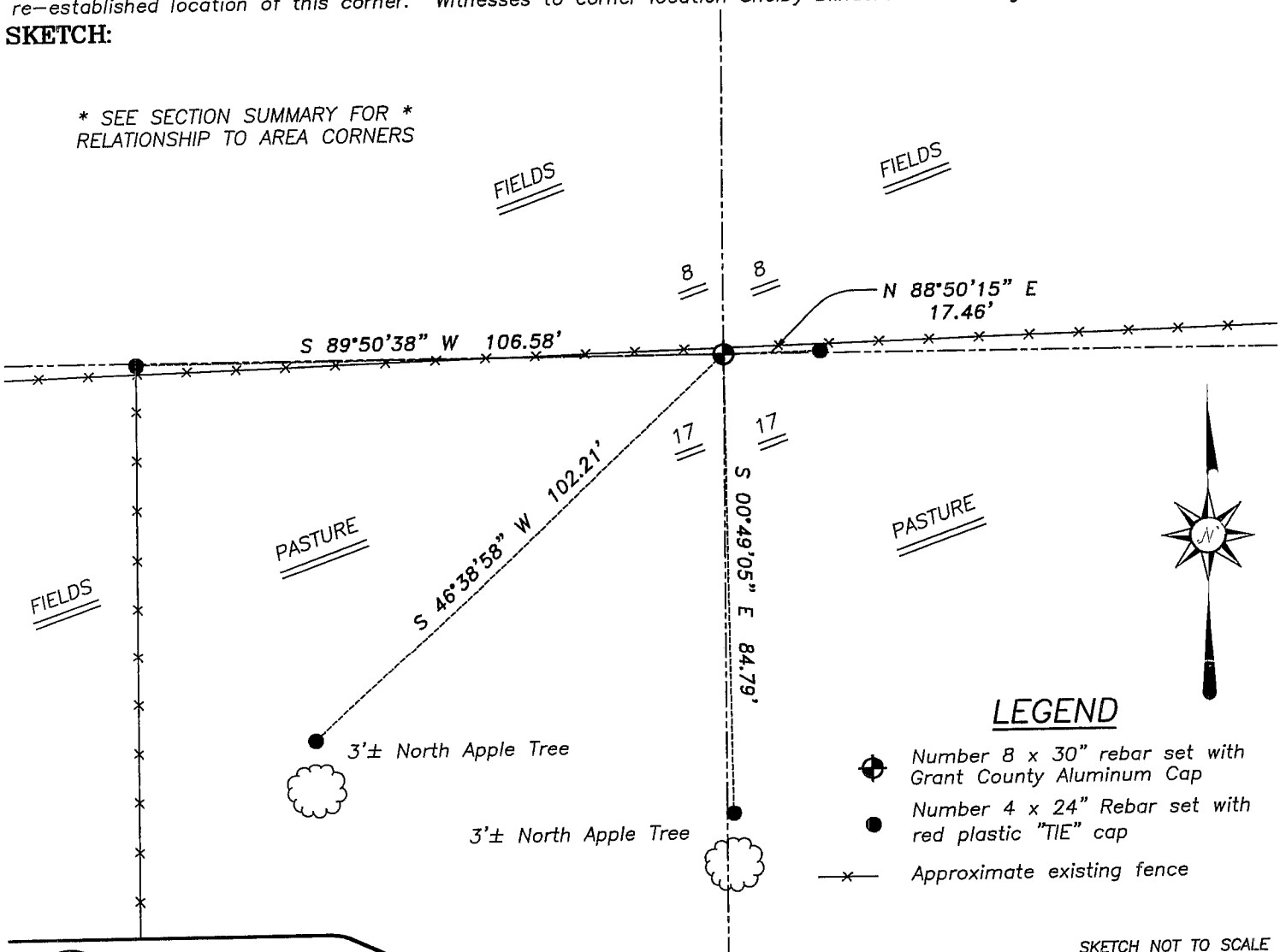
DESCRIPTION OF CORNER EVIDENCE FOUND

I reset the corner proportionately and on-line between the Southeast and Southwest corners of Section 8. This location fit an occupied East-West fence. Verified this location using EDM & GPS methods.

DESCRIPTION OF CORNER AND WITNESS MONUMENTS, references and accessories used to perpetuate the original or re-established location of this corner. Witnesses to corner location Shelby Blindert & Brad Digman.

**SKETCH:**

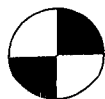
\* SEE SECTION SUMMARY FOR \*  
 RELATIONSHIP TO AREA CORNERS



LEGEND

- ⊕ Number 8 x 30" rebar set with Grant County Aluminum Cap
- Number 4 x 24" Rebar set with red plastic "TIE" cap
- x- Approximate existing fence

SKETCH NOT TO SCALE



**Austin**  
**Engineering LLC**

4211 HWY 81 E, LANCASTER, WI 53813  
 PHONE 608-723-6363 FAX 608-723-6702

JOB NUMBER: 05s160  
 FIELDBOOK: TDSR, 2217  
 G:\T5NR2W\09  
 H:\TIE\T5NR2W\50

DRAWN BY: BJ HAZEN  
 APPROVED: LL AUSTIN