

# U.S. PUBLIC LAND SURVEY MONUMENT RECORD - GRANT COUNTY, WI

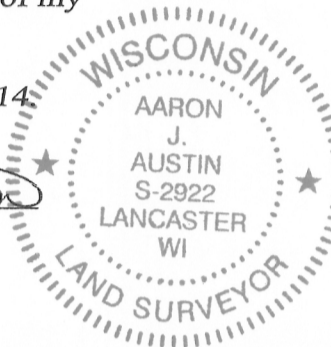
Section 14, Town 5 North Range 2 West, Town of Liberty

**CERTIFICATE:**

I, Aaron J. Austin, do hereby certify that the corner location on this record was determined by me and/or under my direct supervision and that this U.S. Public Land Survey Monument Record is correct and complete to the best of my knowledge and belief.

Dated this 17th day of January, 2014

*Aaron J. Austin*  
 Aaron J. Austin, S-2922



● = CORNER LOCATION

**HISTORY OF CORNER ESTABLISHMENT:**

- 1832-Henry Park set original corner.
- 1995-Larry Austin tied to the corner on a Surveys in Book W, Page 12 and 13.
- 1999-Thomas Buck tied to the corner on C.S.M. No. 601.
- 2001-Larry Austin tied to the corner on Surveys in Book 8, Page 90 and 92.
- 2001-Larry Austin tied to the corner on a Surveys in Book 9, Page 22 and 49.
- 2008-Larry Austin tied to the corner on a Survey in Book 23, Page 40.
- 2009-Larry Austin tied to the corner on Surveys in Book 24, Pages 53 and 62.

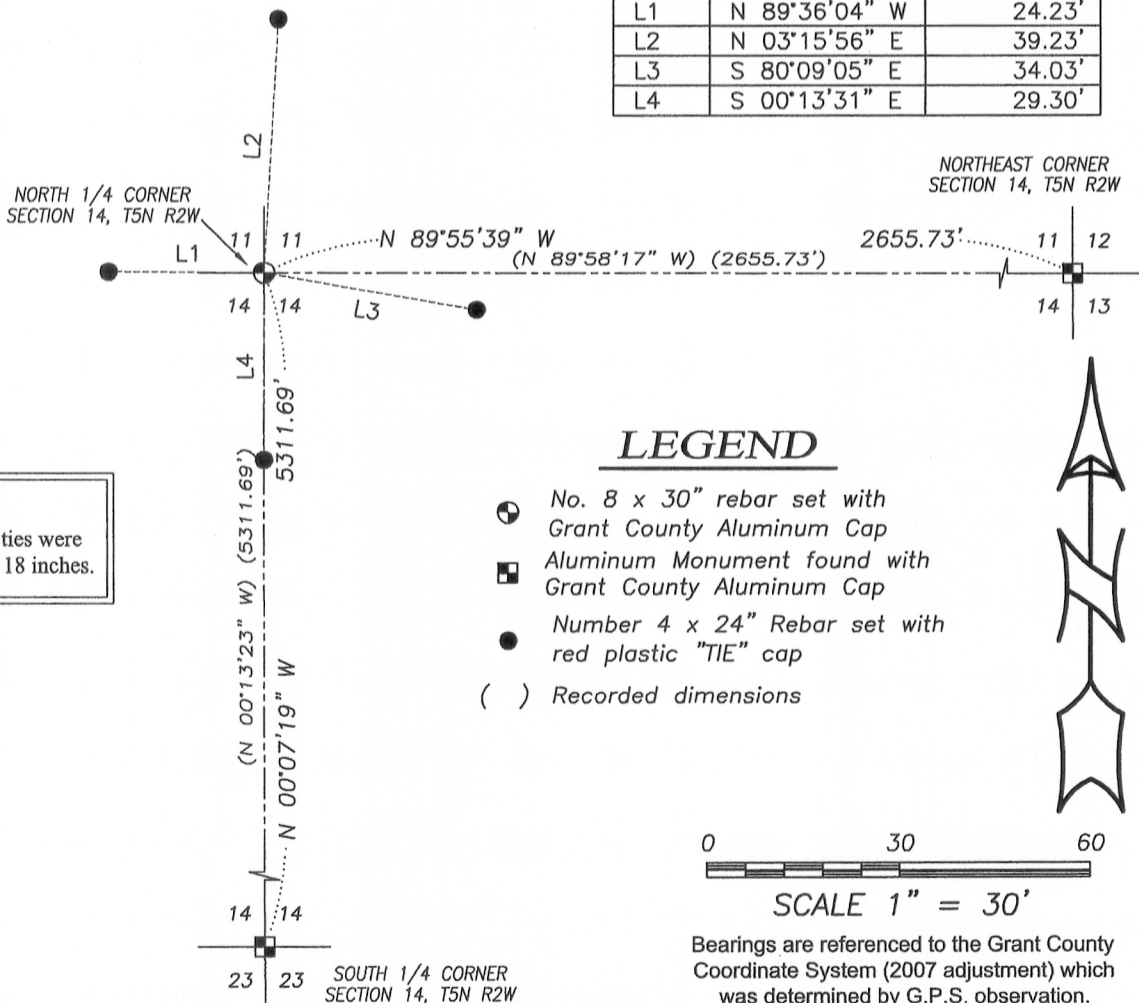
**DESCRIPTION OF CORNER EVIDENCE FOUND:**

No U.S. Public Land Survey Monument record was found for this corner. This corner does fall in an agriculture field. I found a disturbed rebar lying flat near the corner location. I reset the corner based upon measurements taken to the Northeast corner of Section 14 and the South 1/4 corner of Section 14 utilizing dimensions shown on C.S.M. No. 601 prepared by Thomas Buck.

**DESCRIPTION OF CORNER AND WITNESS MONUMENTS, references and accessories used to perpetuate the original or re-established location of this corner. Witnesses to corner location Shane Austin.**

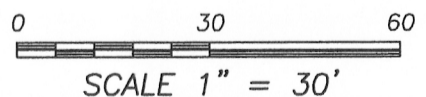
**SKETCH:**

LINE	BEARING	DISTANCE
L1	N 89°36'04" W	24.23'
L2	N 03°15'56" E	39.23'
L3	S 80°09'05" E	34.03'
L4	S 00°13'31" E	29.30'



**NOTE:**  
 N 1/4 corner and all ties were buried approximately 18 inches.

- LEGEND**
- No. 8 x 30" rebar set with Grant County Aluminum Cap
  - Aluminum Monument found with Grant County Aluminum Cap
  - Number 4 x 24" Rebar set with red plastic "TIE" cap
  - ( ) Recorded dimensions



Bearings are referenced to the Grant County Coordinate System (2007 adjustment) which was determined by G.P.S. observation.



4211 HWY 81 E, LANCASTER, WI 53813  
 PHONE: 608-723-6363 FAX: 608-723-6702

JOB NO: 13s211  
 G:\13s211  
 H:\TIE\T5NR2W\44

FIELDBOOK: TDSR  
 DRAWN BY: AJ AUSTIN  
 CREW: SW AUSTIN