

GRANT COUNTY CERTIFIED LAND CORNER

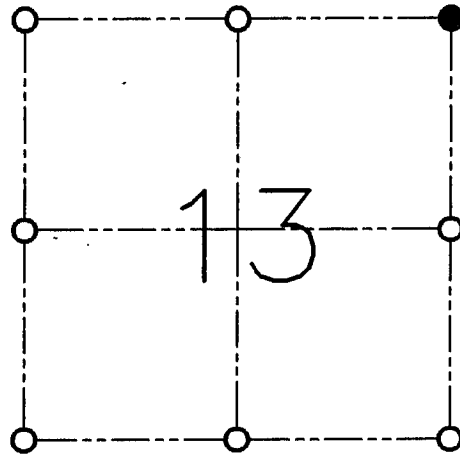
CORNER NO. 41

CERTIFICATE:

I, LARRY L. AUSTIN, DO HEREBY CERTIFY THAT ON NINETEENTH DAY OF MARCH, 1999, I FOUND OCCUPATIONAL EVIDENCE OF THE NORTHEAST CORNER SECTION 13, TOWN 5 NORTH, RANGE 2 WEST, OF THE FOURTH PRINCIPAL MERIDIAN, AND I RE-ESTABLISHED SAID CORNER ACCORDING TO THE WISCONSIN STATUTES AS SHOWN AND DESCRIBED HEREON.

DATED THIS NINTH DAY OF APRIL, 1999

Larry L. Austin
LARRY L. AUSTIN S-1903



● = CORNER LOCATION

**NORTHEAST CORNER
SECTION 13, T 5 N R 2 W
TOWN OF LIBERTY**

HISTORY OF ORIGINAL CORNER ESTABLISHMENT:

CORNER WAS SET IN 1832 BY SIBLEY.

DESCRIPTION OF CORNER EVIDENCE FOUND:

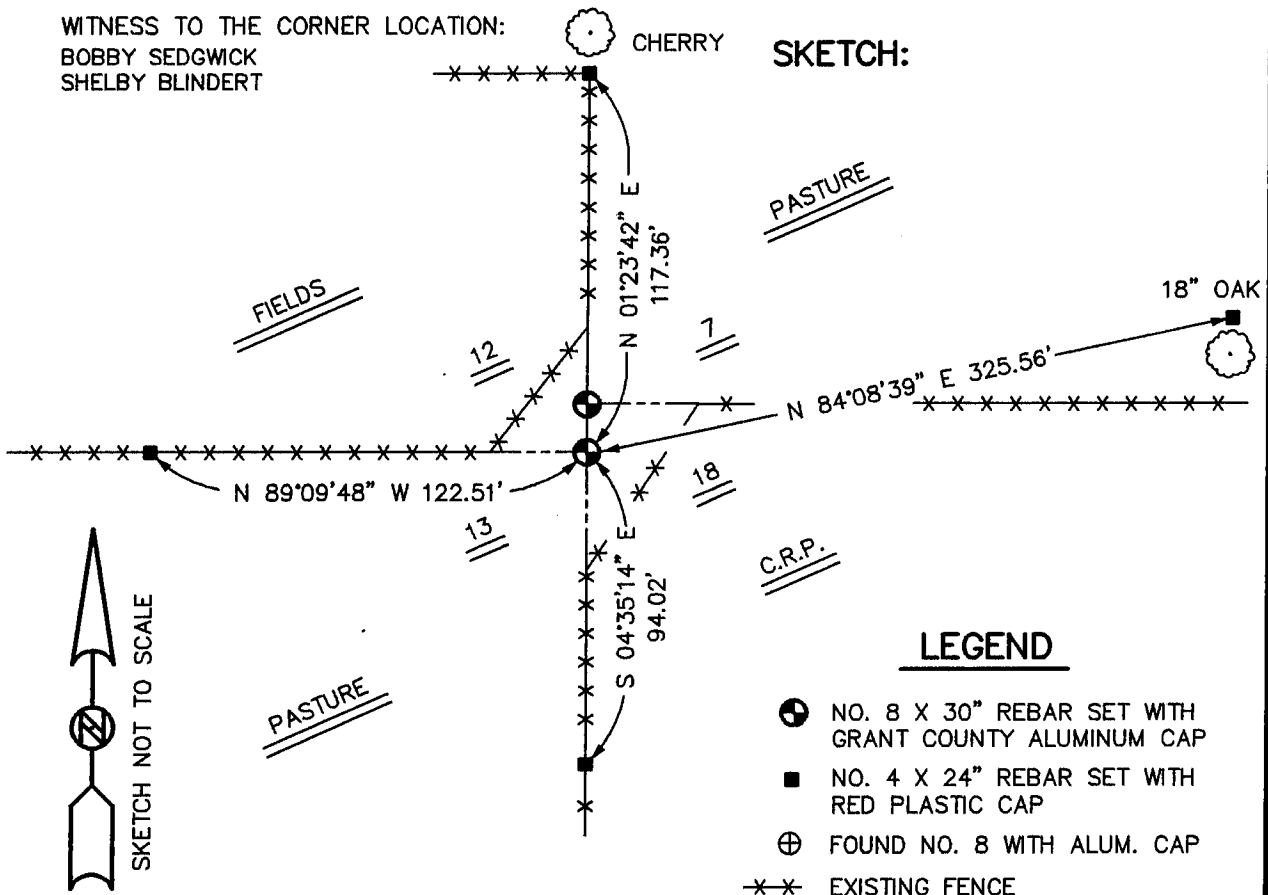
I FOUND AN OCCUPIED FENCE NORTH-SOUTH-WEST. I ACCEPTED THIS LOCATION AFTER AN E.D.M. TRAVERSE OF THE AREA.

DESCRIPTION OF CORNER AND WITNESS MONUMENTS, REFERENCES AND ACCESSORIES USED TO PERPETUATE THE ORIGINAL OR RE-ESTABLISHED LOCATION OF THIS CORNER:

WITNESS TO THE CORNER LOCATION:

BOBBY SEDGWICK
SHELBY BLINDERT

SKETCH:



LEGEND

- NO. 8 X 30" REBAR SET WITH GRANT COUNTY ALUMINUM CAP
- NO. 4 X 24" REBAR SET WITH RED PLASTIC CAP
- ⊕ FOUND NO. 8 WITH ALUM. CAP
- *—*—* EXISTING FENCE