

GRANT COUNTY CERTIFIED LAND CORNER

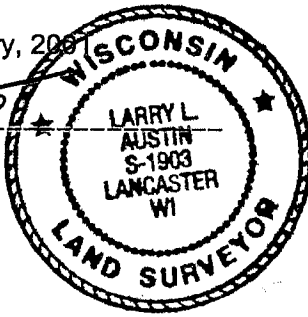
CORNER NUMBER 40

CERTIFICATE:

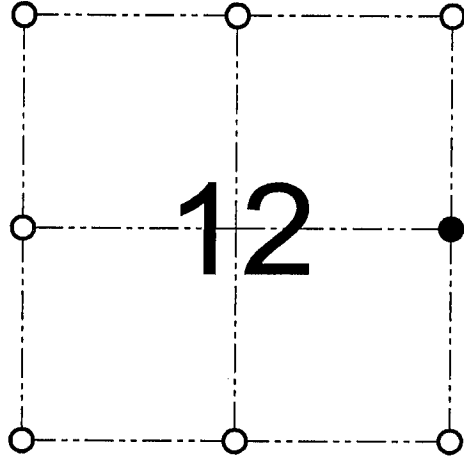
I, Larry L. Austin, do hereby certify that on the 1st day of February, 2001, I found no evidence of the East 1/4 corner of Section 12, Town 5 North, Range 2 West, of the 4th Principal Meridian, and I re-established said corner according to the Wisconsin statutes as shown and described hereon.

Dated this 9th day of February, 2001

Larry L. Austin
Larry L. Austin S-1903



SEAL



● = CORNER LOCATION

EAST 1/4 CORNER OF
SECTION 12, T 5 N R 2 W
TOWN OF LIBERTY

HISTORY OF ORIGINAL CORNER ESTABLISHMENT:

Corner was originally set in 1832 by Sibley. In 1870 Allen tied to the corner. In 1889 Gould tied to the corner.

DESCRIPTION OF CORNER EVIDENCE FOUND:

I set the corner at the proportioned offset from the West 1/4 of Section 7. This location fit well with area corners. Verified this location using EDM & GPS methods.

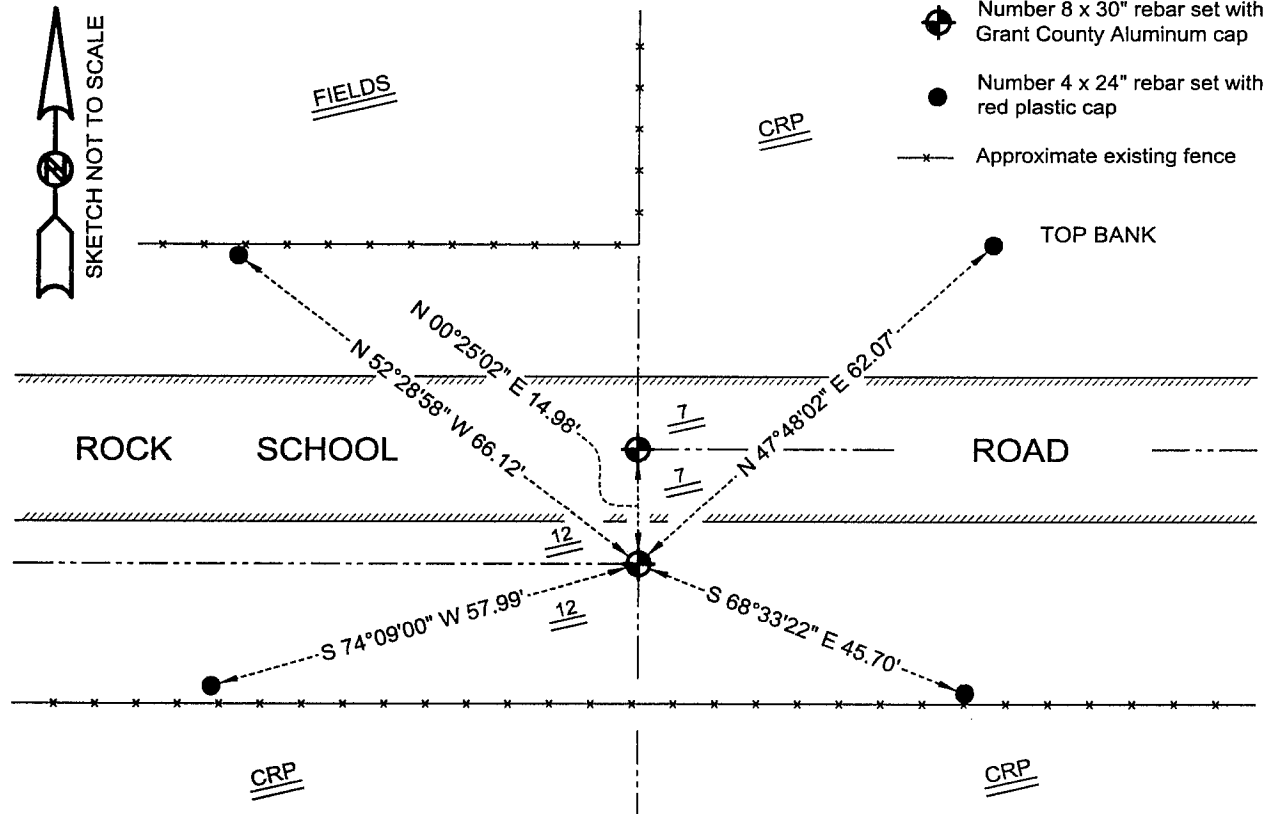
DESCRIPTION OF CORNER AND WITNESS MONUMENTS, references and accessories used to perpetuate the original or re-established location of this corner

WITNESS TO THE CORNER LOCATION: SHANE AUSTIN & TIM FAUVER & BOBBY SEDGWICK

SKETCH:

* SEE SECTION SUMMARY FOR *
RELATIONSHIP TO AREA CORNERS

LEGEND



AUSTIN ENGINEERING, LLC
4211 HWY 81 E, LANCASTER, WI 53813
PHONE 608-723-6363 FAX 608-723-6702

FIELDBOOK: SDR33, 2040
G:\T5NR2W\11
C:\SC14\SWA\TIE\T5NR2W\40

DRAWN BY: SW AUSTIN
APPROVED: LL AUSTIN
CREW: BS - SB - SA - TF