

# U.S. PUBLIC LAND SURVEY MONUMENT RECORD - GRANT COUNTY, WI

Section 12, Town 5 North Range 2 West, Town of Liberty (a)

NOTE: This form is intended and designed to fulfill all requirements of the Wisconsin Administrative Code Chapter A-E 7.08, U.S. Public Land Survey Monument Record (3) (a) (b) (c) (d) (e) (f) (g) (h) (i).

Corner No. 039

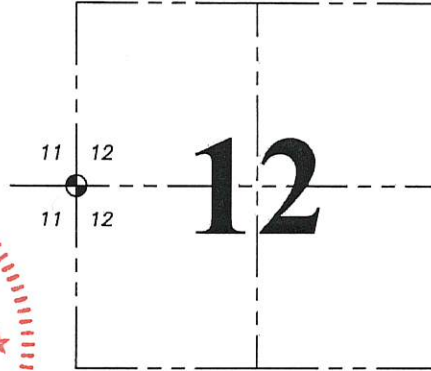
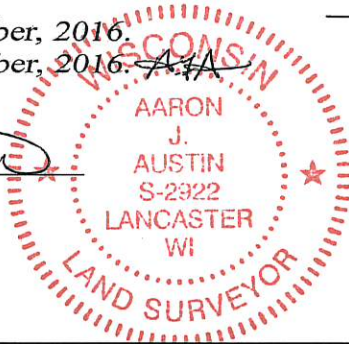
CERTIFICATE: (i)

I, Aaron J. Austin, Wisconsin Professional Land Surveyor, do hereby certify that the corner location on this record was determined by me and/or under my direct supervision and that this U.S. Public Land Survey Monument Record is correct and complete to the best of my knowledge and belief.

Dated this 22nd day of November, 2016.

Revised this 5th day of December, 2016. ~~A.A.~~

*Aaron J. Austin*  
Aaron J. Austin, S-2922



⊙ = CORNER LOCATION

HISTORY OF CORNER ESTABLISHMENT:

Original corner was set in 1832 by Henry Parke. Larry Austin reset the corner and filed a Survey Monument Record dated 10-24-1995.

DESCRIPTION OF CORNER EVIDENCE FOUND: (b) (f) (g) (h)

The corner and witness monuments could not be recovered. I reset the corner based upon found monuments of a Survey by Larry Austin dated 1-31-2001 filed in Book 9, Page 22. Corner location was verified with G.P.S. and E.D.M. methods

DESCRIPTION OF CORNER AND WITNESS MONUMENTS, references and accessories used to perpetuate the original or re-established location of this corner. (c) (d) (e)

Witnesses to corner location Shane Austin.

SKETCH:

**LEGEND**



- ⊙ Section Corner—as designated
- 3/4" x 18" rebar set
- 3/4" rebar found
- ⊕ Existing utility pole
- x-x- Existing fence

PARCEL "B"  
PREVIOUS SURVEY  
BY LARRY AUSTIN  
DATED 1-31-2001  
BOOK 9, PAGE 22

FIELD

2'± SOUTH  
OF UTILITY POLE

S 82°03'47" W  
31.85'

PREVIOUS SURVEY  
BY LARRY AUSTIN  
DATED 12-22-2000  
BOOK 9, PAGE 49

S 16°32'27" W  
50.85'

WEST 1/4 CORNER  
SECTION 12, T5N R2W/  
1" x 24" Rebar set with  
Grant County Aluminum Cap  
(set flush with ground)

S 104°43'  
45°43'40" W

FORMER ROAD BED

ROCK SCHOOL ROAD

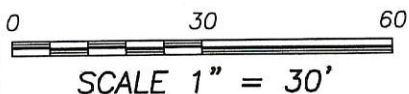
33'

33'

R.O.W.

CENTERLINE

R.O.W.



SCALE 1" = 30'

**U.S. PUBLIC LAND SURVEY MONUMENT RECORD - GRANT COUNTY, WI**

Section 12, Town 5 North Range 2 West, Town of Clifton (a)

NOTE: This form is intended and designed to fulfill all requirements of the Wisconsin Administrative Code Chapter A-E 7.08, U.S. Public Land Survey Monument Record (3) (a) (b) (c) (d) (e) (f) (g) (h) (i).

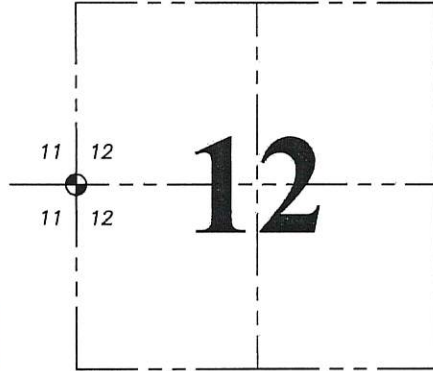
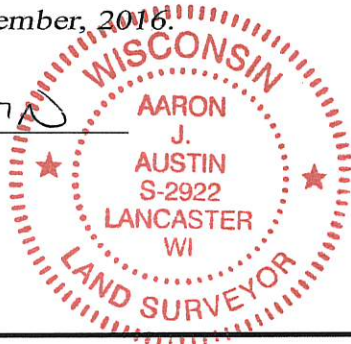
**Corner No. 039**

CERTIFICATE: (i)

I, Aaron J. Austin, Wisconsin Professional Land Surveyor, do hereby certify that the corner location on this record was determined by me and/or under my direct supervision and that this U.S. Public Land Survey Monument Record is correct and complete to the best of my knowledge and belief.

Dated this 22nd day of November, 2016.

*Aaron J. Austin*  
Aaron J. Austin, S-2922



⊕ = CORNER LOCATION

HISTORY OF CORNER ESTABLISHMENT:

Original corner was set in 1832 by Henry Parke. Larry Austin reset the corner and filed a Survey Monument Record dated 10-24-1995.

DESCRIPTION OF CORNER EVIDENCE FOUND: (b) (f) (g) (h)

The corner and witness monuments could not be recovered. I reset the corner based upon found monuments of a Survey by Larry Austin dated 1-31-2001 filed in Book 9, Page 22. Corner location was verified with G.P.S. and E.D.M. methods

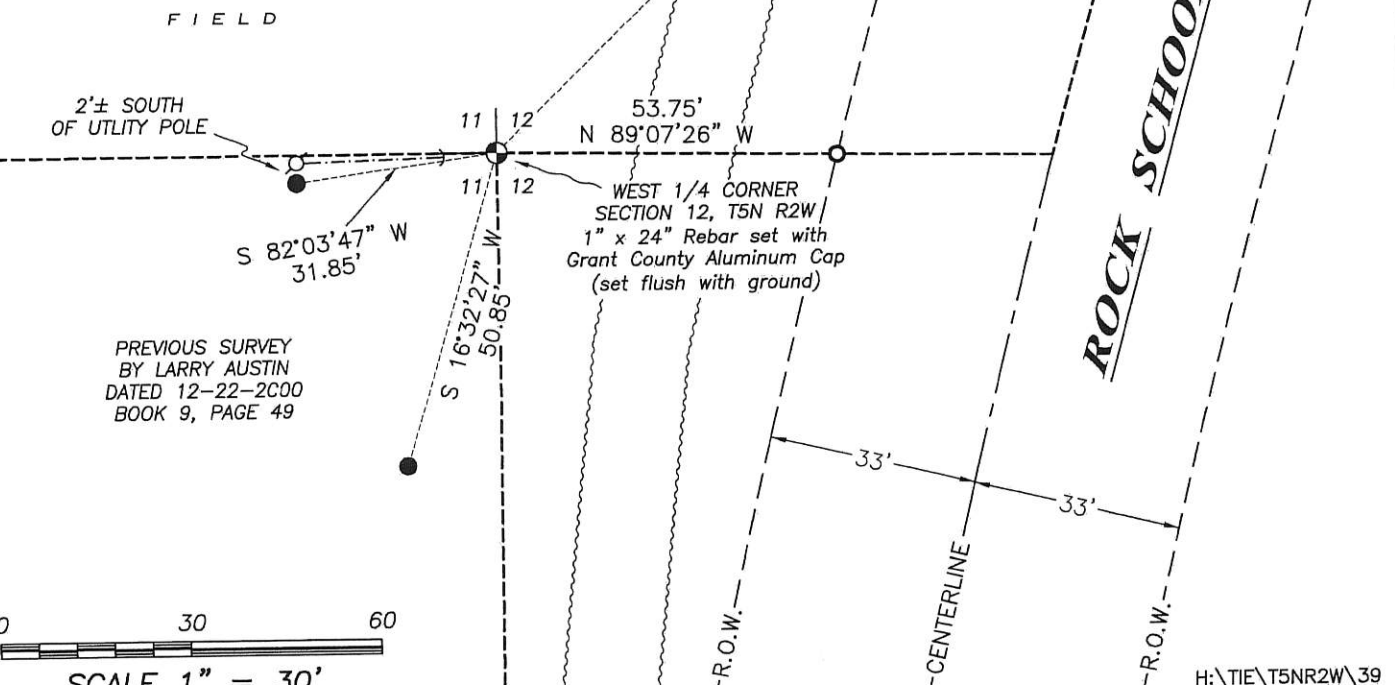
DESCRIPTION OF CORNER AND WITNESS MONUMENTS, references and accessories used to perpetuate the original or re-established location of this corner. (c) (d) (e)

Witnesses to corner location Shane Austin.

SKETCH:

**LEGEND**

- ⊕ Section Corner—as designated
- 3/4" x 18" rebar set
- 3/4" rebar found
- ⊕ Existing utility pole
- x-x- Existing fence

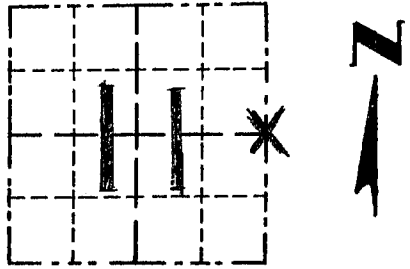


# GRANT COUNTY

## Survey Monument Record

TYPE OF MONUMENT COUNTY MONUMENT  
 STATE PLANE COORDINATES: N \_\_\_\_\_  
 E \_\_\_\_\_  
 ELEVATION — M.S.L. DATUM: \_\_\_\_\_  
 THETA ANGLE: \_\_\_\_\_  
 FIELD BOOK: 9504  
 PAGE: 24

CORNER NO. 39  
 SECTION 11  
 TOWN 5N  
 RANGE 2W  
E 1/4 COR

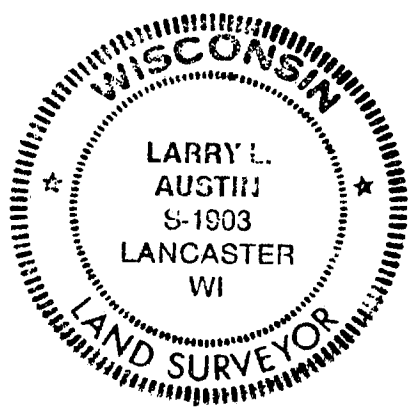


LOCATION  
 (Indicated by "X")

### BASIS FOR MONUMENT LOCATION

(Use reverse side if necessary)  
 Show info such as: History of corner, with reference to Vol. and pg., dates, surveyor; exact description of monument replaced; if location computed, by taped or EDM traverse; landowner, remarks, etc.

SEAL:



ORIGINAL CORNER SET  
 IN 1832 BY PARKE.  
 CORNER WAS USED BY  
 MACMILLAN ON A 1975 SURVEY;  
 I SET THE CORNER BASED ON  
 FOUND MONUMENTS FROM THAT  
 SURVEY; J.C. SCOTT MEASURED TO  
 THE CORNER IN 1881. THESE  
 SURVEYS MATCH AN OCCUPATIONAL  
 EVIDENCE LOCATION. THIS LOCATION  
 WAS VERIFIED BY EDM  
 TRAVERSE IN THE AREA

CERTIFIED CORRECT  
Larry L. Austin  
 Registered Land Surveyor  
 DATE: 10/24/95

### TIE SKETCH

Show at least three (3) ties and monument

- LEGEND**
- ⊕ GRANT COUNTY ALUM. MONUMENT SET
  - 1" x 12" MIN. IRON PIPE SET - TIES
  - X — X — EXISTING FENCE

