

# GRANT COUNTY

## Survey Monument Record

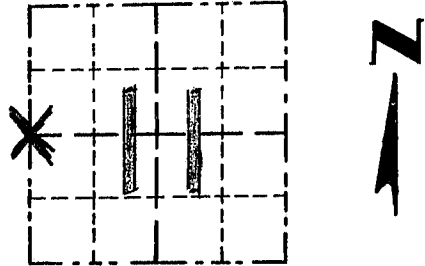
TYPE OF MONUMENT COUNTY MONUMENT  
 STATE PLANE COORDINATES: N \_\_\_\_\_  
 E \_\_\_\_\_  
 ELEVATION — M.S.L. DATUM: \_\_\_\_\_  
 THETA ANGLE: \_\_\_\_\_  
 FIELD BOOK: 9504  
 PAGE: 24

CORNER NO. 38  
 SECTION 11  
 TOWN 5N  
 RANGE 2W  
W 1/4 COR

### BASIS FOR MONUMENT LOCATION

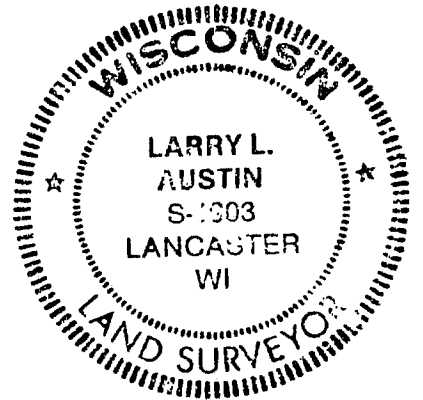
(Use reverse side if necessary)

Show info such as: History of corner, with reference to Vol. and pg., dates, surveyor; exact description of monument replaced; if location computed, by taped or EDM traverse; landowner, remarks, etc.



LOCATION  
(Indicated by "X")

SEAL:



ORIGINAL CORNER SET  
 IN 1832 BY PARKE.  
 NO RECORD OF CORNER FOUND  
 SINCE ORIGINAL SURVEYS.  
 N-S LOCATION BASED ON OCCUPAT-  
 IONAL EVIDENCE — FOUND FENCE;  
 E-W LOCATION BASED / INTERSECT-  
 ION WITH NW CORNER & SW  
 CORNERS OF THE SECTION.

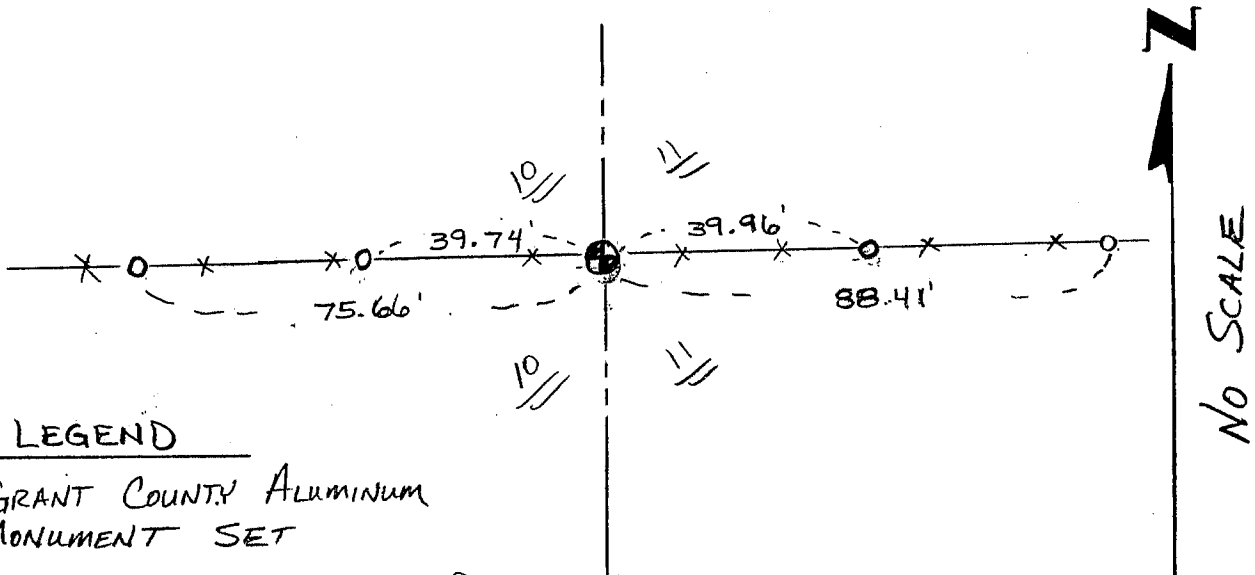
CERTIFIED CORRECT

*Larry L. Austin*  
 Registered Land Surveyor

DATE: 10/24/95

### TIE SKETCH

Show at least three (3) ties and monument



### LEGEND

- ⊙ GRANT COUNTY ALUMINUM MONUMENT SET
- 1" x 12" MIN. LENGTH IRON PIPE SET = TIES
- ✕ ✕ EXISTING FENCE