

U.S. PUBLIC LAND SURVEY MONUMENT RECORD - GRANT COUNTY, WI

Section 2, Town 5 North Range 2 West, Town of Liberty (a)

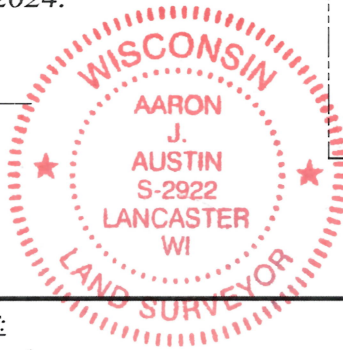
NOTE: This form is intended and designed to fulfill all requirements of the Wisconsin Administrative Code Chapter A-E 7.08, U.S. Public Land Survey Monument Record (3) (a) (b) (c) (d) (e) (f) (g) (h) (i).

CERTIFICATE: (i)

I, Aaron J. Austin, Wisconsin Professional Land Surveyor, do hereby certify that the corner location on this record was determined by me and/or under my direct supervision and that this U.S. Public Land Survey Monument Record is correct and complete to the best of my knowledge and belief.

Dated this 11th day of December, 2024.

Aaron J. Austin (signature)
Aaron J. Austin, S-2922



Grant County Coordinates:
NAD 83 (2011)
Northing: 553,575.57
Easting: 854,989.11

HISTORY OF CORNER ESTABLISHMENT:

Original corner was set in 1832 by Parke.
Larry Austin set a Grant County Aluminum Monument and prepared a Survey Monument Record dated 10-27-1995.

DESCRIPTION OF CORNER EVIDENCE FOUND: (b) (f) (g) (h)

I found the Aluminum Monument Larry set. I set four witness corners after I verified the Monument's location with G.P.S. and E.D.M. methods.

DESCRIPTION OF CORNER AND WITNESS MONUMENTS, references and accessories used to perpetuate the original or re-established location of this corner. (c) (d) (e)

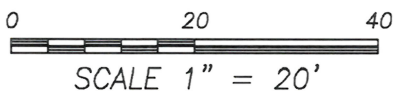
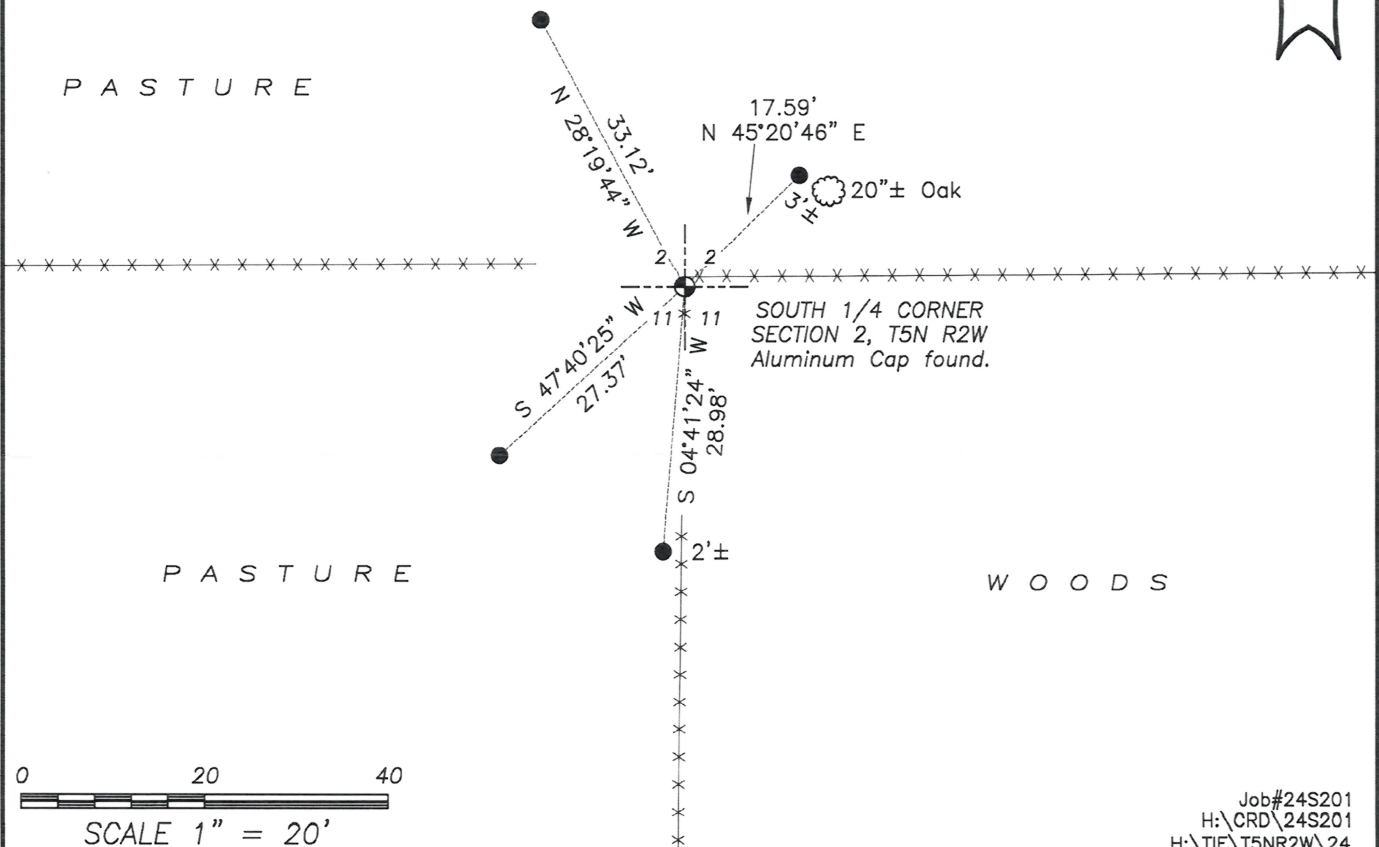
Witnesses to corner location Shane Austin.
Drawn by: Owen Austin.

SKETCH:

LEGEND

- Section Corner-as designated
3/4" x 18" rebar set
Existing fence
Existing tree

PASTURE

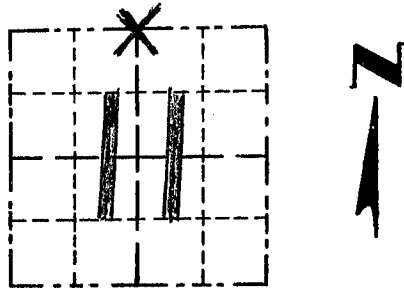


GRANT COUNTY

Survey Monument Record

TYPE OF MONUMENT COUNTY MONUMENT
 STATE PLANE COORDINATES: N _____
 E _____
 ELEVATION — M.S.L. DATUM: _____
 THETA ANGLE: _____
 FIELD BOOK: 9504
 PAGE 25

CORNER NO. 24
 SECTION 11
 TOWN 5N
 RANGE 2W
N 1/4 COR



LOCATION
 (Indicated by "X")

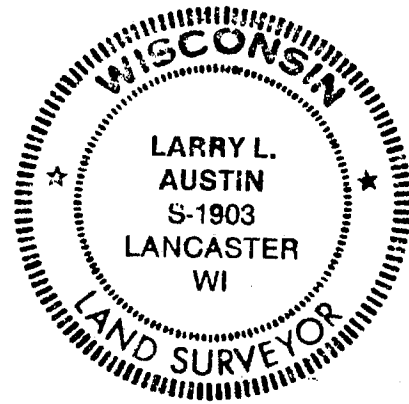
BASIS FOR MONUMENT LOCATION

(Use reverse side if necessary)

Show info such as: History of corner, with reference to Vol. and pg., dates, surveyor; exact description of monument replaced; if location computed, by taped or EDM traverse; landowner, remarks, etc.

ORIGINAL CORNER SET
 IN 1832 BY PARKE.
 NO RECORD FOUND OF THE
 CORNER SINCE THE ORIGINAL
 SURVEYS; CORNER LOCATION
 BASED ON OCCUPATIONAL
 EVIDENCE & VERIFIED BY
 EDM TRAVERSE OF THE
 AREA.

SEAL:



CERTIFIED CORRECT

Larry L. Austin
 Registered Land Surveyor

DATE: 10/24/95

TIE SKETCH

Show at least three (3) ties and monument

LEGEND

- ⊕ GRANT COUNTY ALUM. MONUMENT SET
- 1" X 1/2" IRON PIPES SET = TIES
- ✕✕ EXISTING FENCE

