

# U.S. PUBLIC LAND SURVEY MONUMENT RECORD - GRANT COUNTY, WI

Section 12, Town 5 North Range 2 West, Town of Liberty (a)

NOTE: This form is intended and designed to fulfill all requirements of the Wisconsin Administrative Code Chapter A-E 7.08, U.S. Public Land Survey Monument Record (3) (a) (b) (c) (d) (e) (f) (g) (h) (i).

Corner No. 023

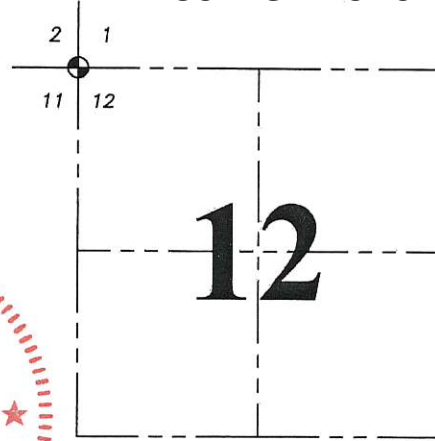
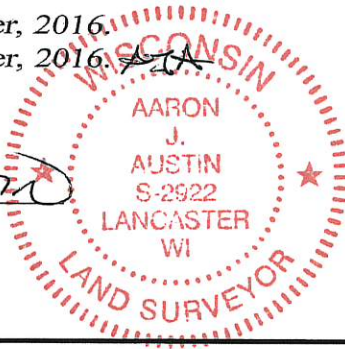
CERTIFICATE: (i)

I, Aaron J. Austin, Wisconsin Professional Land Surveyor, do hereby certify that the corner location on this record was determined by me and/or under my direct supervision and that this U.S. Public Land Survey Monument Record is correct and complete to the best of my knowledge and belief.

Dated this 22nd day of November, 2016.

Revised this 5th day of December, 2016.

*Aaron J. Austin*  
Aaron J. Austin, S-2922



⊕ = CORNER LOCATION

HISTORY OF CORNER ESTABLISHMENT:

Original corner was set in 1832 by Henry Parke. Larry Austin reset the corner and filed a Survey Monument Record dated 10-24-1995.

DESCRIPTION OF CORNER EVIDENCE FOUND: (b) (f) (g) (h)

The corner and witness monuments could not be recovered. I reset the corner based upon found monuments of a Survey by Larry Austin dated 1-31-2001 filed in Book 9, Page 22. Corner location was verified with G.P.S. and E.D.M. methods

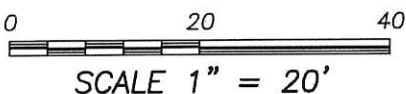
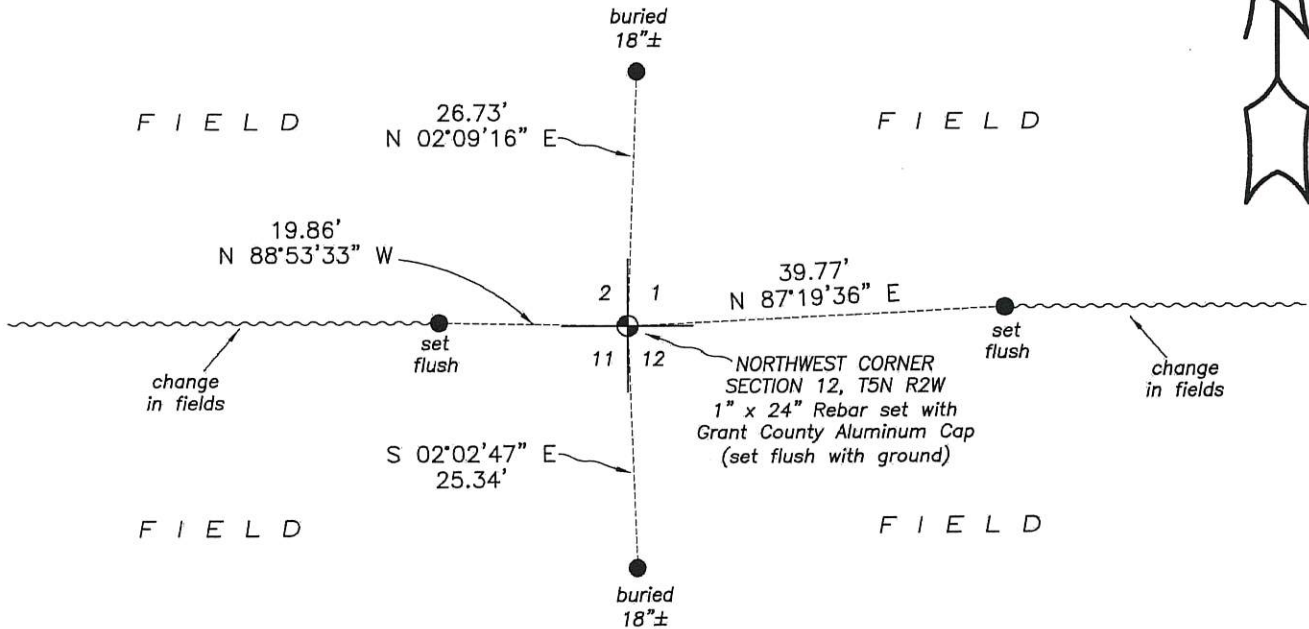
DESCRIPTION OF CORNER AND WITNESS MONUMENTS, references and accessories used to perpetuate the original or re-established location of this corner. (c) (d) (e)

Witnesses to corner location Shane Austin, Aaron Austin.

SKETCH:

**LEGEND**

- ⊕ Section Corner—as designated
- 3/4" x 18" rebar set



**U.S. PUBLIC LAND SURVEY MONUMENT RECORD - GRANT COUNTY, WI**

Section 12, Town 5 North Range 2 West, Town of Clifton (a)

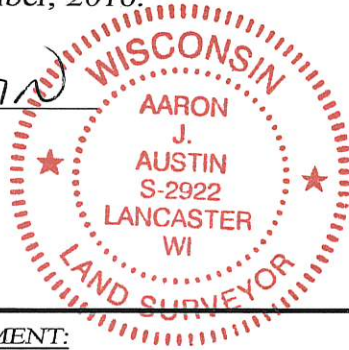
NOTE: This form is intended and designed to fulfill all requirements of the Wisconsin Administrative Code Chapter A-E 7.08, U.S. Public Land Survey Monument Record (3) (a) (b) (c) (d) (e) (f) (g) (h) (i).

CERTIFICATE: (i)

I, Aaron J. Austin, Wisconsin Professional Land Surveyor, do hereby certify that the corner location on this record was determined by me and/or under my direct supervision and that this U.S. Public Land Survey Monument Record is correct and complete to the best of my knowledge and belief.

Dated this 22nd day of November, 2016.

*Aaron J. Austin*  
 Aaron J. Austin, S-2922



⊕ = CORNER LOCATION

HISTORY OF CORNER ESTABLISHMENT:

Original corner was set in 1832 by Henry Parke. Larry Austin reset the corner and filed a Survey Monument Record dated 10-24-1995.

DESCRIPTION OF CORNER EVIDENCE FOUND: (b) (f) (g) (h)

The corner and witness monuments could not be recovered. I reset the corner based upon found monuments of a Survey by Larry Austin dated 1-31-2001 filed in Book 9, Page 22. Corner location was verified with G.P.S. and E.D.M. methods

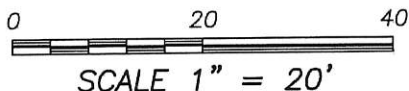
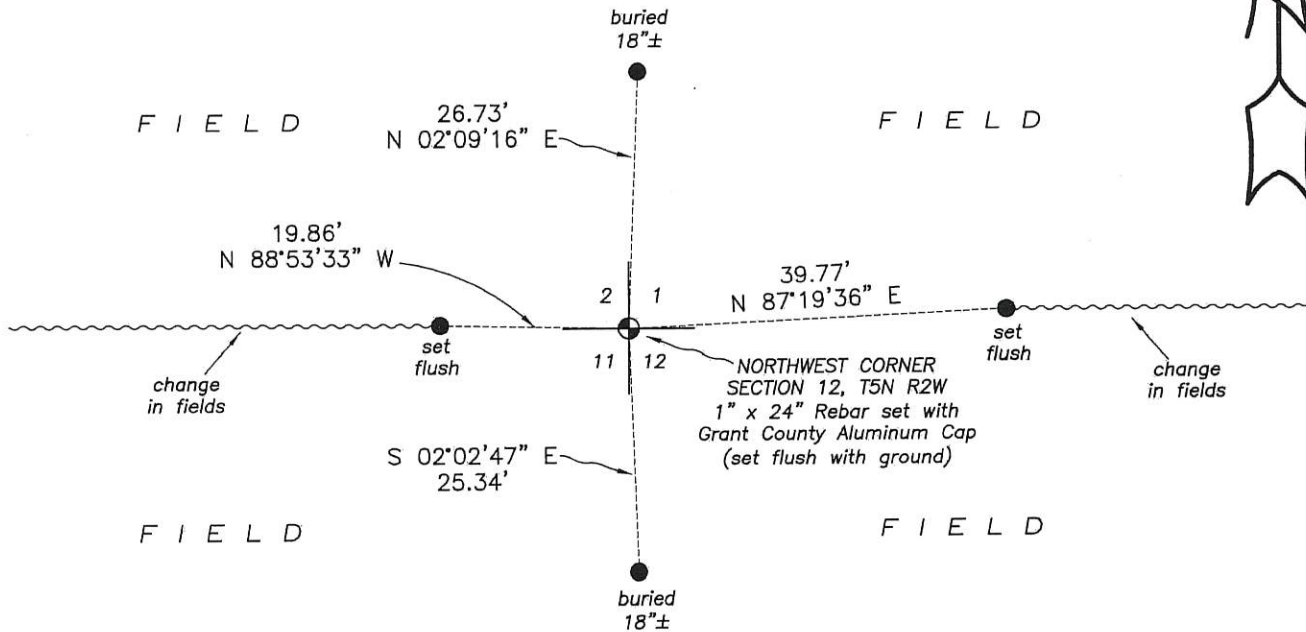
DESCRIPTION OF CORNER AND WITNESS MONUMENTS, references and accessories used to perpetuate the original or re-established location of this corner. (c) (d) (e)

Witnesses to corner location Shane Austin, Aaron Austin.

SKETCH:

**LEGEND**

- ⊕ Section Corner—as designated
- 3/4" x 18" rebar set



# GRANT COUNTY

## Survey Monument Record

TYPE OF MONUMENT COUNTY MONUMENT

STATE PLANE COORDINATES: N \_\_\_\_\_  
E \_\_\_\_\_

ELEVATION — M.S.L. DATUM: \_\_\_\_\_

THETA ANGLE: \_\_\_\_\_

FIELD BOOK: 9504

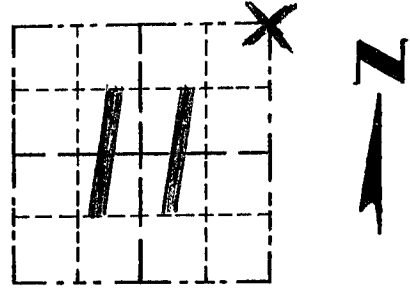
PAGE 26

CORNER NO. 23

SECTION 11

TOWN 5N

RANGE ZW  
NE COR



LOCATION  
(Indicated by "X")

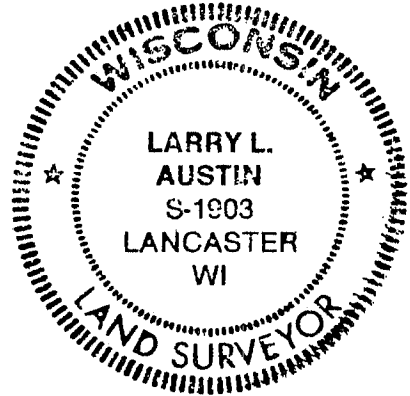
### BASIS FOR MONUMENT LOCATION

(Use reverse side if necessary)

Show info such as: History of corner, with reference to Vol. and pg., dates, surveyor; exact description of monument replaced; if location computed, by taped or EDM traverse; landowner, remarks, etc.

SEAL:

- ORIGINAL CORNER SET IN 1832 BY PARKE
- CORNER WAS DIMENSIONED AT 40.06 CH No. OF E 1/4 CORNER ON A 1870 SURVEY. I ACCEPTED AN E-W FENCE FOR THE N-S LOCATION & set the corner AT RECORDED DIST FROM THE N 1/4 CORNER OF 40.08 ch.



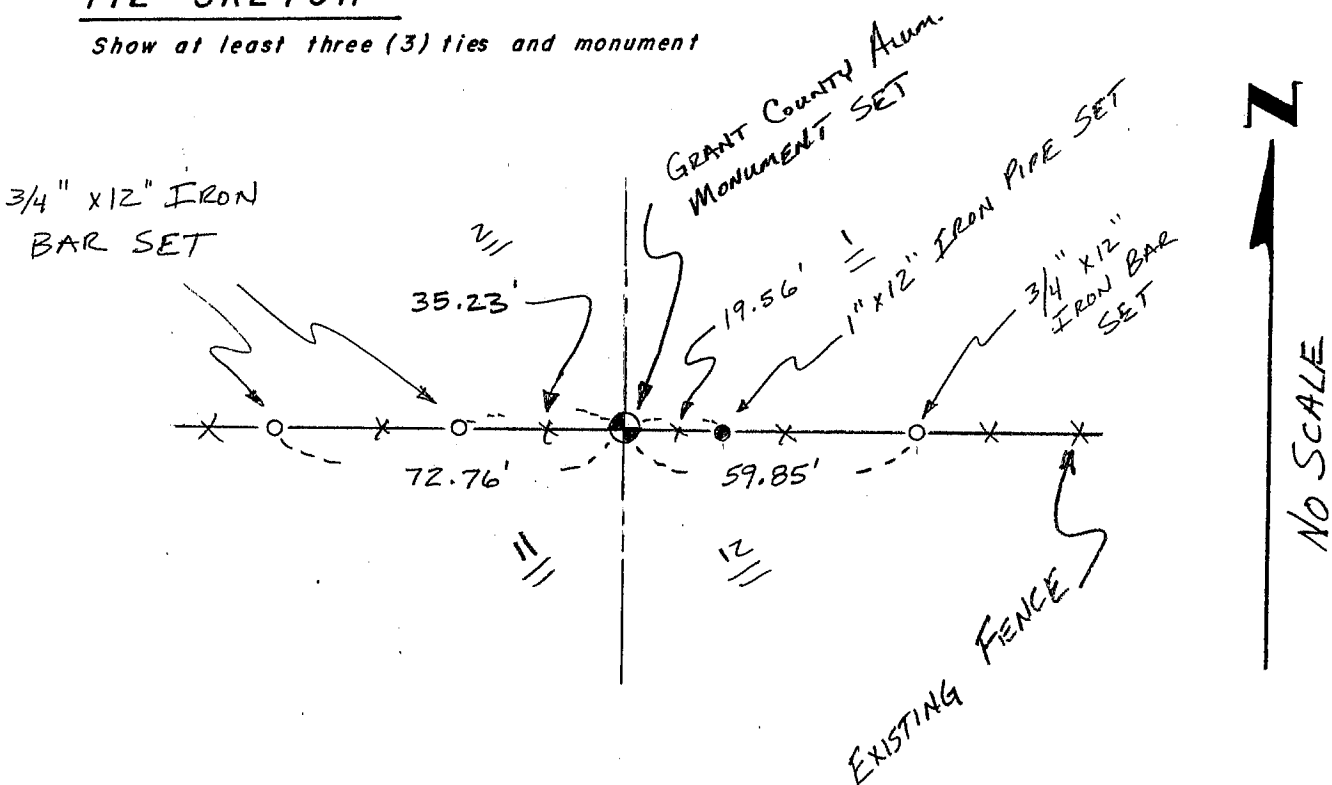
CERTIFIED CORRECT

Larry L. Austin  
Registered Land Surveyor

DATE: 10/24/95

### TIE SKETCH

Show at least three (3) ties and monument



NO SCALE